

MT. CLEMENS, MICHIGAN

RNAV (GPS) RWY 19

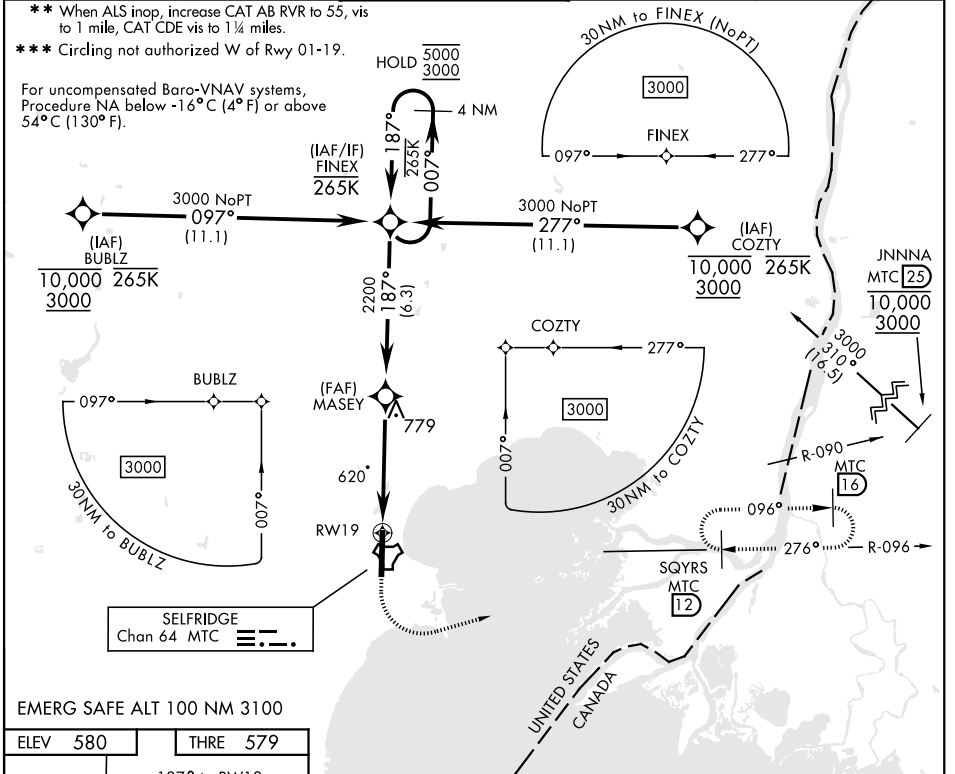
APCH CRS 187°	Rwy ldg THRE Arpt Elev	9000 579 580
-------------------------	------------------------------	---

AL-276 [USAF]

SELFRIDGE ANGB (KMTC)

DME/DME RNP-0.3 NA.	ALSF-1	MISSED APPROACH: Climb to 1200 then climbing left turn to 4000 direct SQYRS (MTC TACAN R-096/T2DME), do not exceed 250 KIAS until turn completion and hold, continue climb-in-hold to 4000.
---------------------	--------	---

ATIS 125.325 270.1	APP CON 119.6 318.2	TOWER ★ 120.15 (CTAF) 0 225.4	GND CON 128.3 275.8	CLNC DEL 128.3 275.8
------------------------------	-------------------------------	---	-------------------------------	--------------------------------

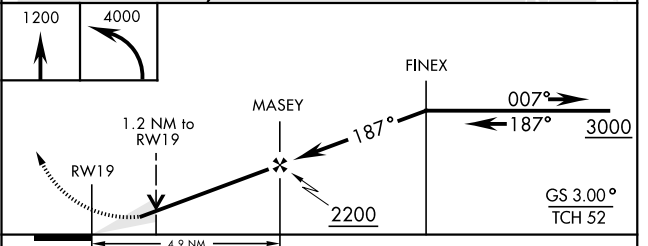
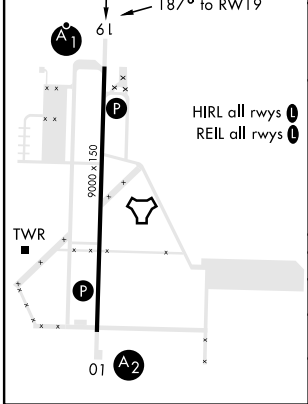


EC-1, 28 NOV 2024 to 26 DEC 2024

EC-1, 28 NOV 2024 to 26 DEC 2024

EMERG SAFE ALT 100 NM 3100

ELEV 580	THRE 579
----------	----------



CATEGORY	A	B	C	D	E
LNAV/VNAV DA*	1000/40		421	(500-3/4)	
LNAV MDA**	1000/24 421 (500-1/2)		1000/40 421 (500-3/4)		
C CIRCLING ***	1040-1 460 (500-1)		1040-1 1/2 460 (500-1/2)		1140-2 560 (600-2)

MT. CLEMENS, MICHIGAN

42° 37' N-82° 50' W

SELFRIDGE ANGB (KMTC)

Orig 12AUG21

RNAV (GPS) RWY 19