

MT. CLEMENS, MICHIGAN

TACAN RWY 1

TACAN MTC Chan 64	APCH CRS 018°	Rwy Ldg THRE Arprt Elev 9000 579 580
-----------------------------	-------------------------	--

AL-276 [USAF]

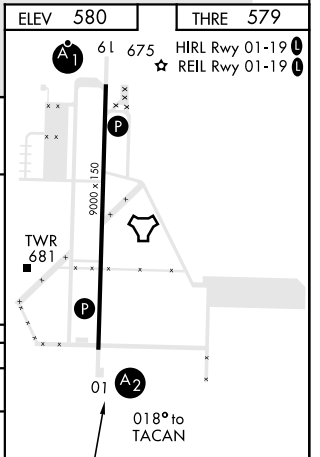
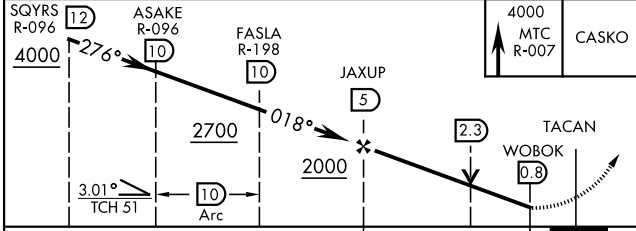
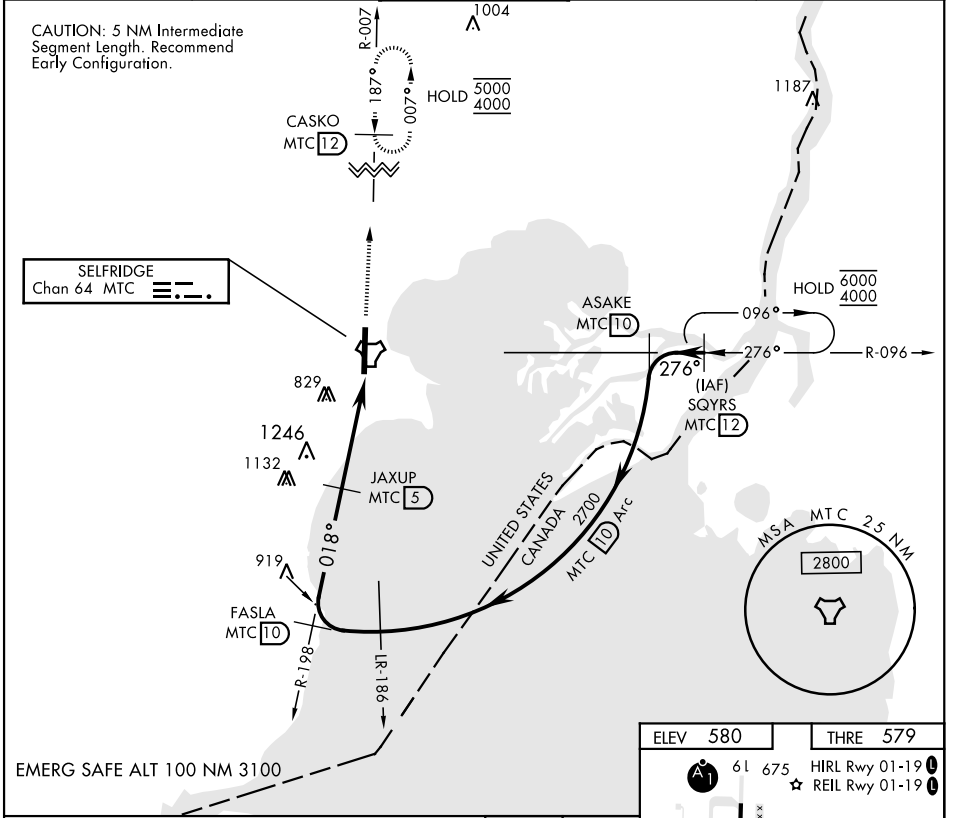
SELFRIDGE ANGB (KMTC)

▼ * When ALS inop, increase CAT AB RVR to 55, vis to 1 mile, CAT CDE vis to 1 1/8 miles.
 ** Circling not authorized W of Rwy 01-19.

SALS
A2

MISSED APPROACH: Climb to 4000 on MTC R-007 to CASKO and hold, continue climb-in-hold to 4000.

ATIS 125.325 270.1	SELFRIDGE APP CON 119.6 318.2	SELFRIDGE TOWER ★ 120.15 (CTAF) 0 225.4	GND CON 128.3 275.8	CLNC DEL 128.3 275.8
------------------------------	---	---	-------------------------------	--------------------------------



CATEGORY	A	B	C	D	E
S-01*	1120/40	541 (600-3/4)	1120-1 1/8	541 (600-1 1/8)	
CIRCLING**	1120-1	541 (600-1)	1120-1 1/8	1140-2	561 (600-2)

MT. CLEMENS, MICHIGAN

42° 37' N-82° 50' W

SELFRIDGE ANGB (KMTC)

Amdt 3 23AUG12

TACAN RWY 1

EC-1, 28 NOV 2024 to 26 DEC 2024

EC-1, 28 NOV 2024 to 26 DEC 2024