

(TRMML4.TRMML) 24137

# TRMML FOUR DEPARTURE (RNAV)

AL-276 (FAA)

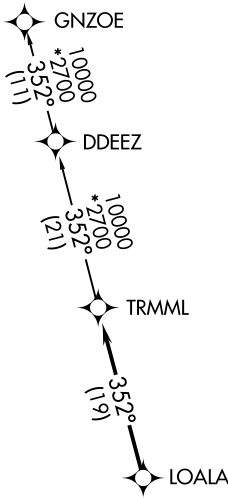
SELFRIDGE ANGB (MTC)

MOUNT CLEMENS, MICHIGAN

**TOP ALTITUDE:  
ASSIGNED BY ATC**

RNAV 1 - DME/DME/IRU or GPS.  
RADAR required.

SELFRIDGE DEP CON \*  
119.6 391.9  
ATIS  
125.325 270.1  
CLNC DEL  
128.3 275.8  
GND CON  
128.3 275.8  
SELFRIDGE TOWER \*  
120.15 225.4

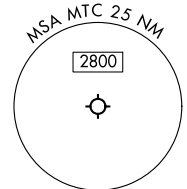


**TAKEOFF MINIMUMS:**

Rwy 1: Standard.

Rwy 19: Standard with minimum climb of 235' per NM to 1500.

NOTE: Turbojet departures at/above 10000, maintain 280K until advised by ATC.



NOTE: Chart not to scale.

## DEPARTURE ROUTE DESCRIPTION

TAKEOFF RUNWAY 1: Climb on heading 007° or as assigned by ATC, thence....

TAKEOFF RUNWAY 19: Climb on heading 187° or as assigned by ATC, thence....

....for RADAR vectors to LOALA, then on track 352° to TRMML, then on (transition). Maintain ATC assigned altitude, expect filed altitude 10 minutes after departure.

GNZOE TRANSITION (TRMML4.GNZOE):

# TRMML FOUR DEPARTURE (RNAV)

(TRMML4.TRMML) 16MAY24

MOUNT CLEMENS, MICHIGAN

SELFRIDGE ANGB (MTC)

EC-1, 28 NOV 2024 to 26 DEC 2024

EC-1, 28 NOV 2024 to 26 DEC 2024