

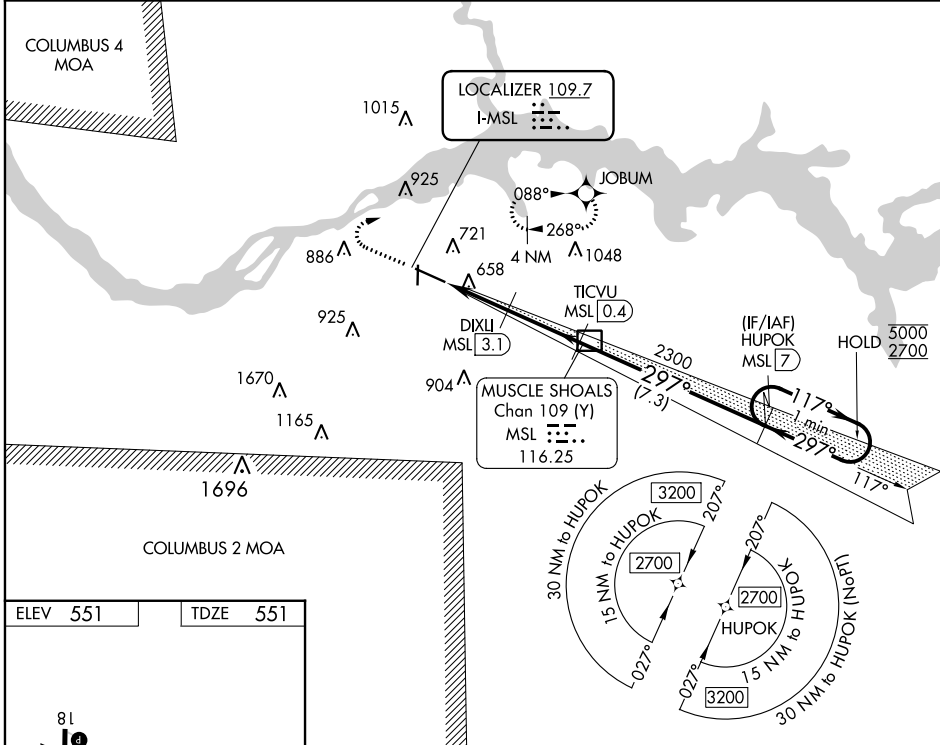
LOC I-MSL 109.7	APP CRS 297°	Rwy Idg TDZE Apt Elev	6694 551 551
---------------------------	------------------------	-----------------------------	---

ILS Y or LOC Y RWY 30

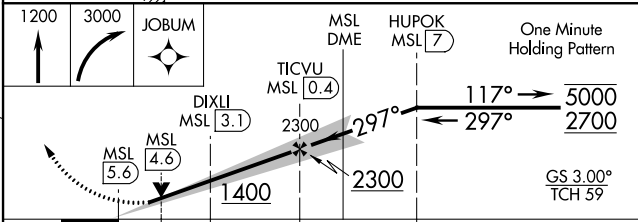
NORTHWEST ALABAMA RGNL (MSL)

RNAV 1 - GPS.	MALSR 	MISSED APPROACH: Climb to 1200 then climbing right turn to 3000 direct JOBUM and hold, continue climb-in-hold to 3000.
DME required.		
<p>▲ DME from MSL DME. Simultaneous reception of I-MSL and MSL DME required. For inop ALS increase S-LOC 30 Cats C/D visibility to 1 SM.</p>		

ASOS 119.425	MEMPHIS CENTER 120.8 307.0	GCO 121.725	UNICOM 123.05 (CTAF) 0
------------------------	--------------------------------------	-----------------------	----------------------------------



ELEV 551	TDZE 551
----------	----------



CATEGORY	A	B	C	D
S-ILS 30		751-1/2	200 (200-1/2)	
S-LOC 30	920-1/2	369 (400-1/2)	920-5/8	369 (400-5/8)
C CIRCLING	1040-1	489 (500-1)	1280-2 729 (800-2)	1280-2 1/4 729 (800-2 1/4)

- REIL Rwy 12 **0**
- MIRL Rwy 18-36 **0**
- HIRL Rwy 12-30 **0**

SE-4, 28 NOV 2024 to 26 DEC 2024

SE-4, 28 NOV 2024 to 26 DEC 2024