

LOC I-MSL <b>109.7</b>	APP CRS <b>297°</b>	Rwy Idg TDZE Apt Elev	<b>6694</b> <b>551</b> <b>551</b>
---------------------------	------------------------	-----------------------------	---

# ILS Z or LOC Z RWY 30

NORTHWEST ALABAMA RGNL (MSL)

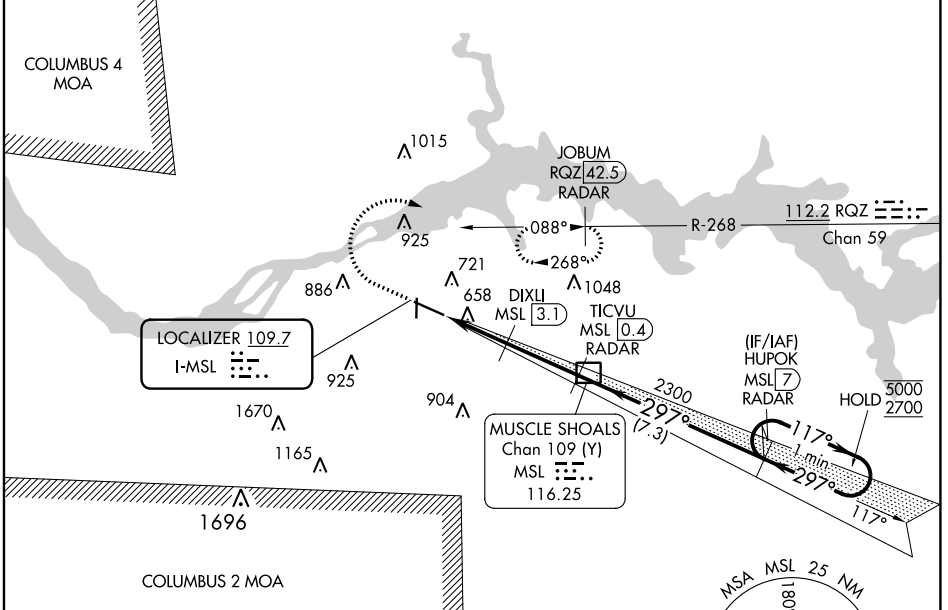
DME required. RADAR required.

**▼** DME from MSL DME.  
**▲** Simultaneous reception of I-MSL and MSL DME required.  
 For inop ALS increase S-LOC 30 Cats C/D visibility to 1 SM.

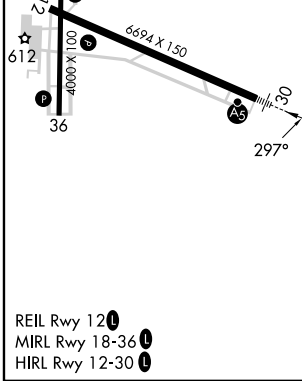
**MALS R**

**MISSED APPROACH:** Climb to 1200 then climbing right turn to 3000 on heading 020° to intercept RQZ VORTAC R-268 to JOBUM/RQZ VORTAC 42.5 DME/RADAR and hold, continue climb-in-hold to 3000.

ASOS <b>119.425</b>	MEMPHIS CENTER <b>120.8 307.0</b>	GCO <b>121.725</b>	UNICOM <b>123.05 (CTAF)</b>
------------------------	--------------------------------------	-----------------------	--------------------------------



ELEV 551	TDZE 551
----------	----------



1200	3000	RQZ R-268	JOBUM RQZ 42.5 RADAR	MSL DME	HUPOK MSL (7) RADAR	One Minute Holding Pattern
		DIXLI MSL (3.1)	TICVU MSL (0.4) RADAR	2300	5000	2700
		MSL (5.6)	MSL (4.6)	2300	5000	2700
				2300	5000	2700

CATEGORY	A	B	C	D
S-ILS 30	751-1/2		200 (200-1/2)	
S-LOC 30	920-1/2	369 (400-1/2)	920-5/8	369 (400-5/8)
<b>C</b> CIRCLING	1040-1	489 (500-1)	1280-2 729 (800-2)	1280-2 1/4 729 (800-2 1/4)

SE-4, 28 NOV 2024 to 26 DEC 2024

SE-4, 28 NOV 2024 to 26 DEC 2024