

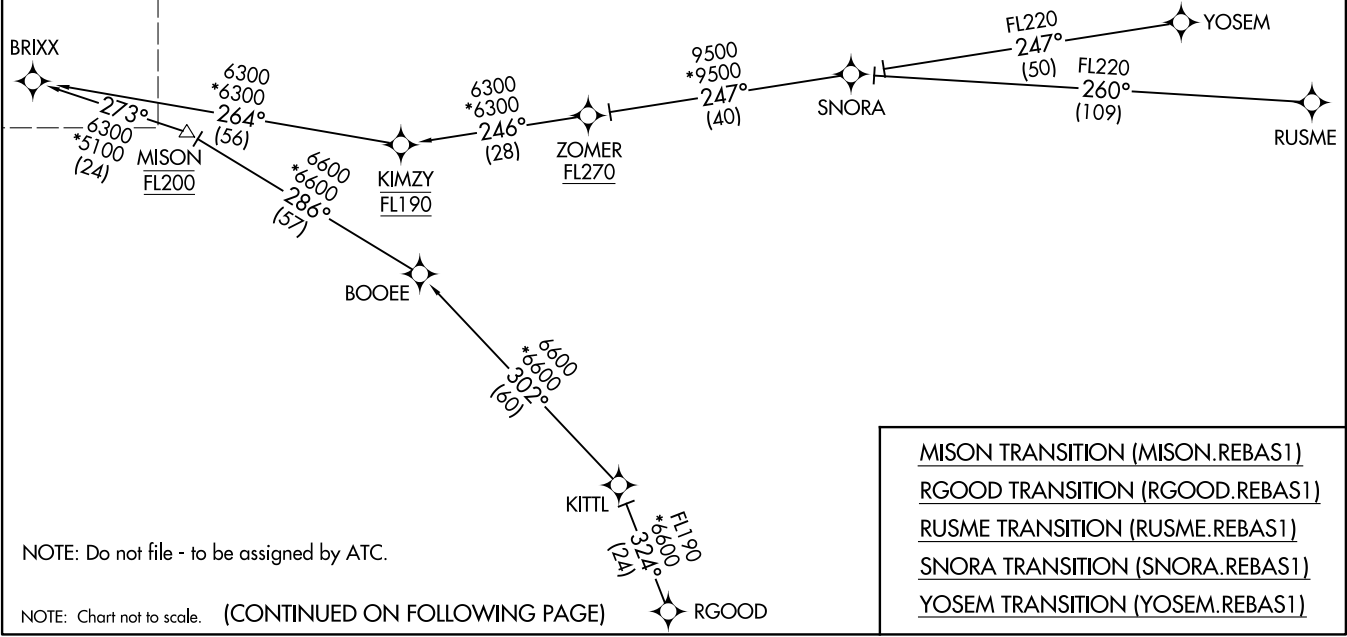
(BRXX.REBAS1) 11 JUL 24

REBAS ONE ARRIVAL (RNAV) Transition Routes

NAPA, CALIFORNIA

RNAV 1 - DME/DME/IRU or GPS.  
RADAR required.

See following page for arrival routes.



NOTE: Do not file - to be assigned by ATC.

NOTE: Chart not to scale. (CONTINUED ON FOLLOWING PAGE)

- OAKLAND CENTER 127.8 353.5
- APC ATIS 124.05
- STS ATIS 120.55
- APC GND CON 121.7
- STS GND CON 121.9
- NAPA TOWER\* 118.7 257.8
- SANTA ROSA TOWER\* 118.5 363.0

- MISON TRANSITION (MISON.REBAS1)
- RGOOD TRANSITION (RGOOD.REBAS1)
- RUSME TRANSITION (RUSME.REBAS1)
- SNORA TRANSITION (SNORA.REBAS1)
- YOSEM TRANSITION (YOSEM.REBAS1)

(BRXX.REBAS1) 24193

REBAS ONE ARRIVAL (RNAV) Transition Routes AL-281 (FAA)

NAPA, CALIFORNIA

(BRIXX.REBAS1) 24305

AL-281 (FAA)

# REBAS ONE ARRIVAL (RNAV) Arrival Routes

NAPA, CALIFORNIA

HEALDSBURG MUNI

RNAV 1 - DME/DME/IRU or GPS.

RADAR required.

OAKLAND CENTER  
 127.8 353.5  
 APC ATIS  
 124.05  
 STS ATIS  
 120.55  
 APC GND CON  
 121.7  
 STS GND CON  
 121.9  
 NAPA TOWER ★  
 118.7 257.8  
 SANTA ROSA TOWER ★  
 118.5 363.0

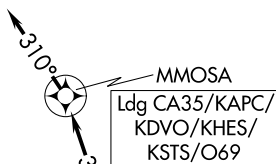
CHARLES M SCHULZ/ SONOMA COUNTY

PETALUMA MUNI

NAPA COUNTY

GNOSS FLD

SAN RAFAEL (Pvt)



NOTE: Do not file - to be assigned by ATC.

NOTE: Chart not to scale.

## ARRIVAL ROUTE DESCRIPTION

LANDING ALL AIRPORTS: From BRIXX on track 344° to REBAS, then on track 325° to MMOSA, then on track 310°. Expect RADAR vectors to final approach course.

BRIXX

SW-2, 28 NOV 2024 to 26 DEC 2024

SW-2, 28 NOV 2024 to 26 DEC 2024

# REBAS ONE ARRIVAL (RNAV) Arrival Routes

NAPA, CALIFORNIA

(BRIXX.REBAS1) 11JUL24