

VORTAC	SGD	APP CRS	Rwy Idg	5008
<b>112.1</b>		<b>050°</b>	TDZE	<b>21</b>
Chan <b>58</b>			Apt Elev	<b>36</b>

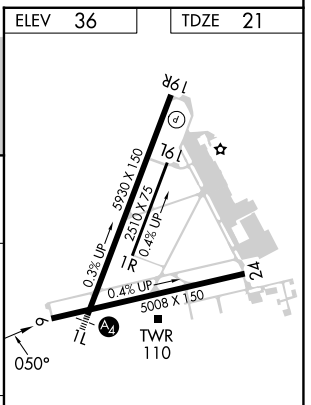
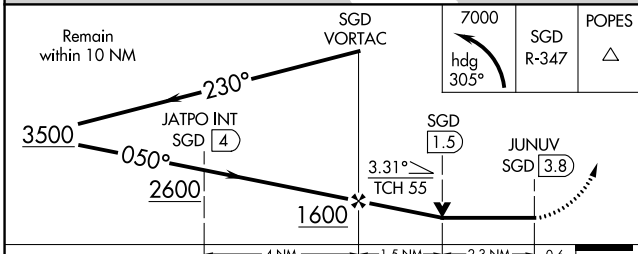
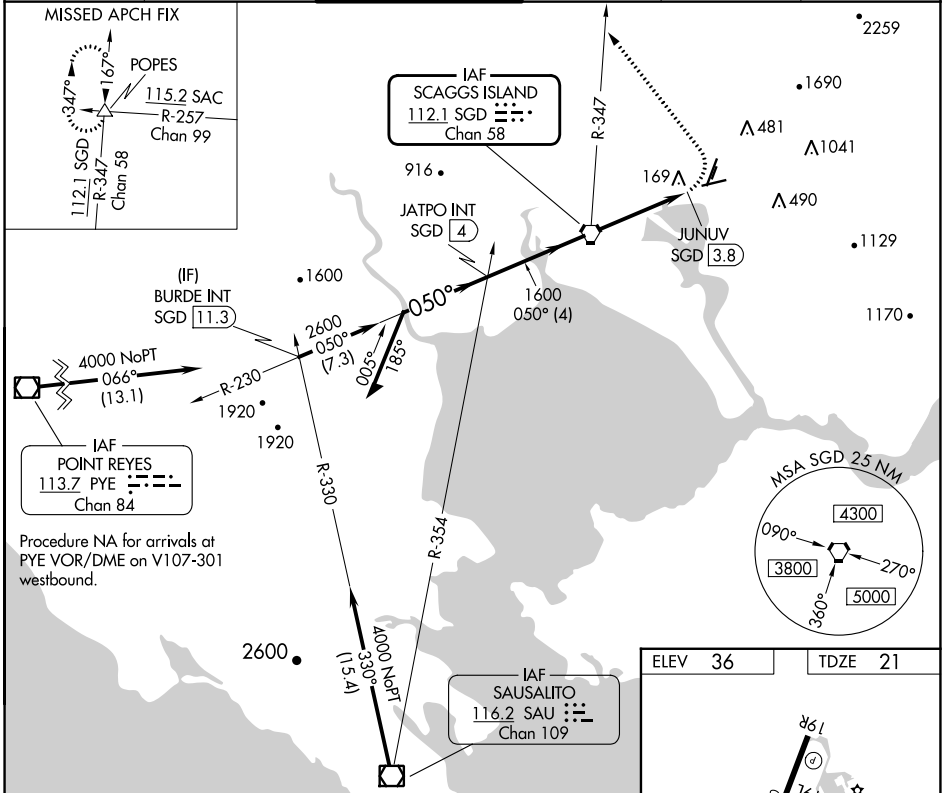
# VOR RWY 6

NAPA COUNTY (APC)

**⚠** Rwy 6 helicopter visibility reduction below ¼ SM NA.  
 Circling Cats A/B/C NA east of Rwy 19R and northwest of Rwy 24. Circling Cat D NA east of Rwy 19L-1R.

**MISSED APPROACH:** Climbing left turn to 7000 on heading 305° and SGD VORTAC R-347 to POPES INT and hold, continue climb-in-hold to 7000.

ATIS	OAKLAND CENTER	NAPA TOWER ★	GND CON	CLNC DEL	UNICOM
<b>124.05</b>	<b>127.8 353.5</b>	<b>118.7 (CTAF) 257.8</b>	<b>121.7</b>	<b>127.85</b>	<b>122.95</b>



CATEGORY	A	B	C	D
S-6	1080-1¼ 1059 (1100-1¼)	1080-1½ 1059 (1100-1½)	1080-3	1059 (1100-3)
<b>C</b> CIRCLING	1080-1¼ 1044 (1100-1¼)	1080-1½ 1044 (1100-1½)	1280-3 1244 (1300-3)	1300-3 1264 (1300-3)

REIL Rwy 6

MIRL Rws 6-24 and 1L-19R

FAF to MAP 3.8 NM

Knots	60	90	120	150	180
Min:Sec	3:48	2:32	1:54	1:31	1:16

SW-2, 28 NOV 2024 to 26 DEC 2024

SW-2, 28 NOV 2024 to 26 DEC 2024