

RNAV 1 - DME/DME/IRU or GPS.

RADAR required.

OAKLAND CENTER
127.8 353.5
APC ATIS
124.05
STS ATIS
120.55
APC GND CON
121.7
STS GND CON
121.9
NAPA TOWER ★
118.7 257.8
SANTA ROSA TOWER ★
118.5 363.0

(OAK.VNYRD1) 24193
VNYRD ONE ARRIVAL (RNAV) Transition Routes
AL-281 (FAA)

NAPA, CALIFORNIA

See following page for arrival routes.

OAKLAND
OAK



MISON
FL200

STEEV

KIMZY
FL190

ZOMER
FL270

YOSEM

RUSME

BOOEE



KITTL

RGOOD

- MISON TRANSITION (MISON.VNYRD1)
- RGOOD TRANSITION (RGOOD.VNYRD1)
- RUSME TRANSITION (RUSME.VNYRD1)
- SNORA TRANSITION (SNORA.VNYRD1)
- YOSEM TRANSITION (YOSEM.VNYRD1)

NOTE: Chart not to scale. (CONTINUED ON FOLLOWING PAGE)

VNYRD ONE ARRIVAL (RNAV) Transition Routes
(OAK.VNYRD1) 11 JUL 24

NAPA, CALIFORNIA

(OAK.VNYRD1) 24305

AL-281 (FAA)

VNYRD ONE ARRIVAL (RNAV) Arrival Routes

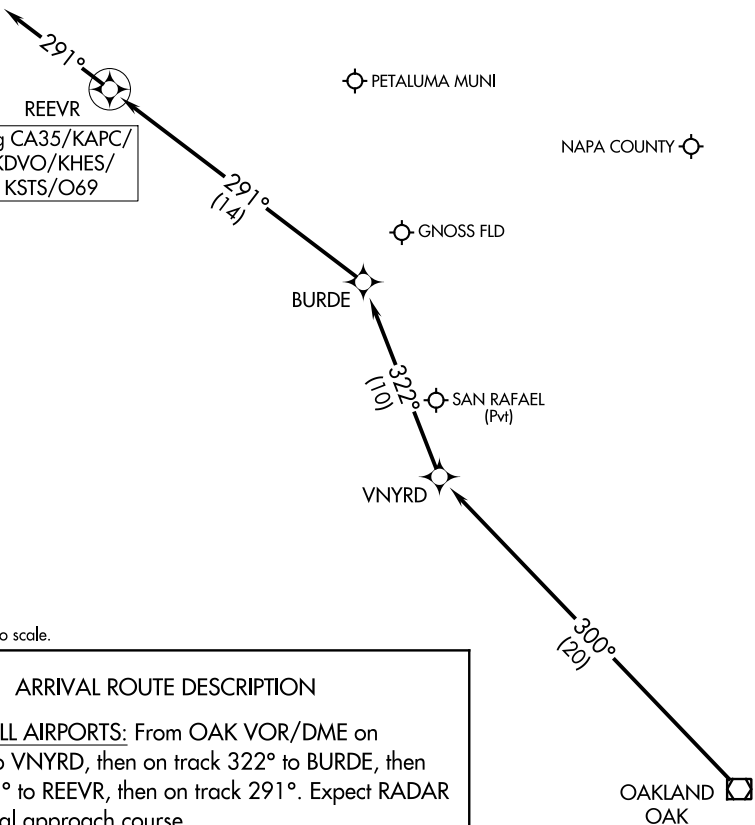
NAPA, CALIFORNIA

HEALDSBURG MUNI

RNAV 1 - DME/DME/IRU or GPS.
RADAR required.

OAKLAND CENTER
127.8 353.5
APC ATIS
124.05
STS ATIS
120.55
APC GND CON
121.7
STS GND CON
121.9
NAPA TOWER ★
118.7 257.8
SANTA ROSA TOWER ★
118.5 363.0

CHARLES M SCHULZ/
SONOMA COUNTY



SW-2, 28 NOV 2024 to 26 DEC 2024

SW-2, 28 NOV 2024 to 26 DEC 2024

NOTE: Chart not to scale.

ARRIVAL ROUTE DESCRIPTION

LANDING ALL AIRPORTS: From OAK VOR/DME on track 300° to VNYRD, then on track 322° to BURDE, then on track 291° to REEVR, then on track 291°. Expect RADAR vectors to final approach course.

VNYRD ONE ARRIVAL (RNAV) Arrival Routes

NAPA, CALIFORNIA

(OAK.VNYRD1) 11JUL24