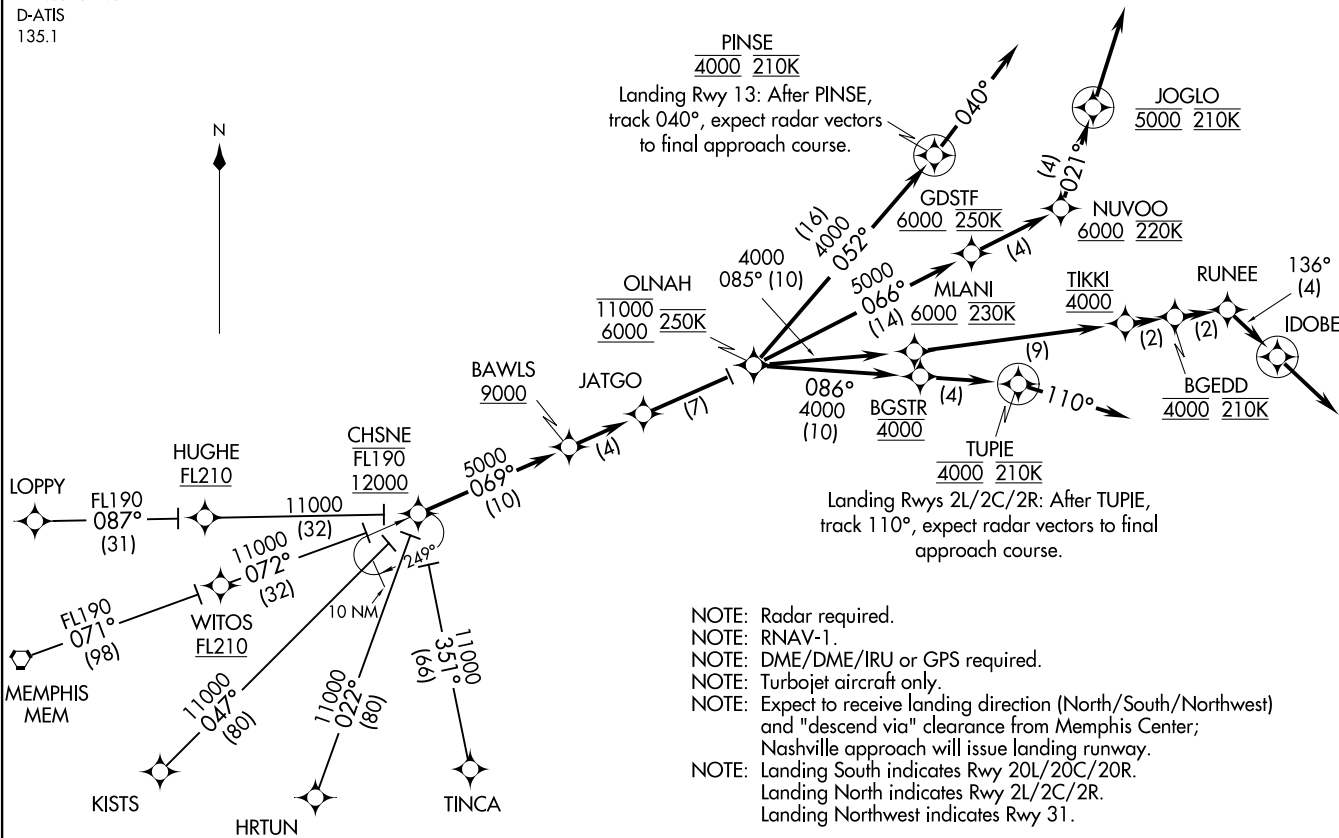


CHSNE TWO ARRIVAL (RNAV)
(CHSNE:CHSNE2) 24JUL14

NASHVILLE WEST APP CON
119.35 372.0
D-ATIS
135.1



PINSE
4000 210K
Landing Rwy 13: After PINSE,
track 040°, expect radar vectors
to final approach course.

JOGLO
5000 210K

GDSTF
6000 250K

NUVOO
6000 220K

OLNAH
11000 6000
250K

MLANI
6000 230K

TIKKI
4000

RUNEE
4000 210K

IDOBE
4000 210K

BAWLS
9000

JATGO
4000 250K

BGSTR
4000

TUPIE
4000 210K

Landing Rws 2L/2C/2R: After TUPIE,
track 110°, expect radar vectors
to final approach course.

LOPPY
FL190 087°
(31)

HUGHE
FL210

CHSNE
FL190 12000

MEMPHIS
MEM
FL190 071°
(98)

WITOS
FL210 11000 072°
(32)

KISTS
11000 040°
(80)

HRTUN
11000 022°
(80)

TINCA
11000 351°
(66)

- NOTE: Radar required.
- NOTE: RNAV-1.
- NOTE: DME/DME/IRU or GPS required.
- NOTE: Turbojet aircraft only.
- NOTE: Expect to receive landing direction (North/South/Northwest) and "descend via" clearance from Memphis Center; Nashville approach will issue landing runway.
- NOTE: Landing South indicates Rwy 20L/20C/20R.
- NOTE: Landing North indicates Rwy 2L/2C/2R.
- NOTE: Landing Northwest indicates Rwy 31.

(NARRATIVE ON FOLLOWING PAGE)

NOTE: Chart not to scale.

CHSNE TWO ARRIVAL (RNAV)
(CHSNE:CHSNE2) 22195

AL-282 (FAA)

NASHVILLE INTL (RNAV)
NASHVILLE, TENNESSEE

CHSNE TWO ARRIVAL (RNAV)

ARRIVAL ROUTE DESCRIPTION

HRTUN TRANSITION (HRTUN.CHSNE2)

KISTS TRANSITION (KISTS.CHSNE2)

LOPPY TRANSITION (LOPPY.CHSNE2)

MEMPHIS TRANSITION (MEM.CHSNE2)

TINCA TRANSITION (TINCA.CHSNE2)

From over CHSNE on track 069° to cross BAWLS at/above 9000, then on track 069° to JATGO, then on track 069° to cross OLNAH at/above 6000 and at/below 11000 and at 250K, then on assigned runway transition.

LANDING NORTH (RWY 2L/2C/2R): From over OLNAH on track 086° to cross BGSTR at 4000, then on track 086° to cross TUPIE at 4000 and at 210K, then on track 110°. Expect radar vectors to final approach course.

LANDING RWY 13: From over OLNAH on track 052° to cross PINSE at 4000 and at 210K, then on track 040°. Expect radar vectors to final approach course.

LANDING SOUTH (RWY 20L/20C/20R): From over OLNAH on track 066° to cross GDSTF at/above 6000 and at 250K, then on track 066° to cross NUVOO at/above 6000 and at 220K, then on track 021° to cross JOGLO at 5000 and at 210K, then on track 021°. Expect radar vectors to final approach course.

LANDING NORTHWEST (RWY 31): From over OLNAH on track 085° to cross MLANI at/above 6000 and at 230K, then on track 085° to cross TIKKI at 4000, then on track 085° to cross BGEDD at 4000 and at 210K, then on track 085° to RUNEE, then on track 136° to IDOBE, then on track 136°. Expect radar vectors to final approach course.

SE-1, 28 NOV 2024 to 26 DEC 2024

SE-1, 28 NOV 2024 to 26 DEC 2024