

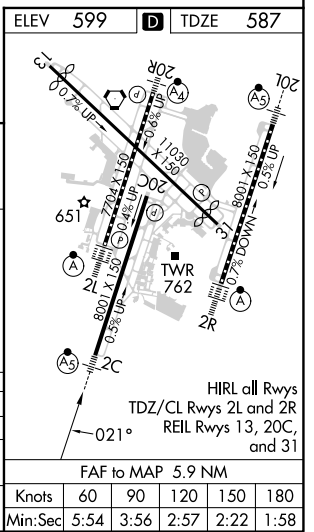
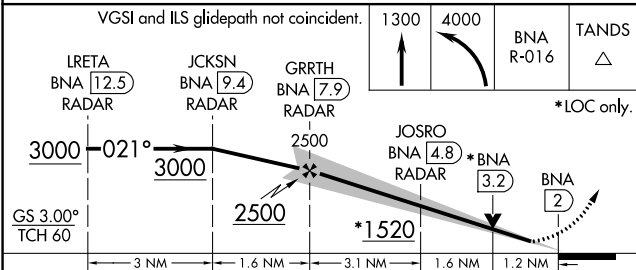
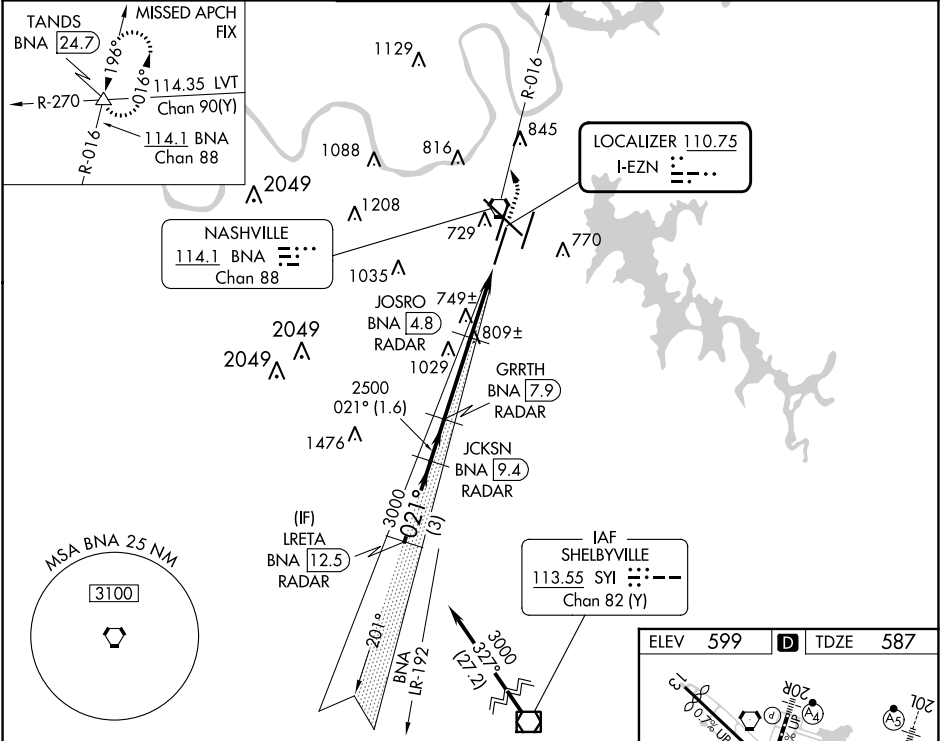
LOC I-EZN 110.75	APP CRS 021°	Rwy Idg TDZE Apt Elev	7601 587 599
----------------------------	------------------------	-----------------------------	---

ILS or LOC RWY 2C

NASHVILLE INTL (BNA)

DME or RADAR required.		MALSR 	MISSED APPROACH: Climb to 1300 then climbing left turn to 4000 on BNA VORTAC R-016 to TANDS INT/BNA 24.7 and hold.	
<p>▼ Simultaneous approach authorized. For inop ALS, increase S-LOC 2C Cats C and D visibility to RVR 6000. DME from BNA VORTAC.</p> <p>▲ Simultaneous reception of I-EZLN and BNA DME required. #RVR 1800 authorized with the use of FD or AP or HUD to DA.</p>				

D-ATIS 135.1	NASHVILLE APP CON 118.4 360.7	NASHVILLE TOWER 118.6 257.8	GND CON 121.9 348.6	CLNC DEL 126.05	CPDLC
------------------------	---	---------------------------------------	-------------------------------	---------------------------	-------



CATEGORY	A	B	C	D
S-ILS 2C #	787/24		200 (200-1/2)	
S-LOC 2C	1000/24	413 (500-1/2)	1000/40	413 (500-3/4)
CIRCLING	1100-1 501 (600-1)	1120-1 521 (600-1)	1200-1 3/4 601 (700-1 3/4)	1380-2 1/2 781 (800-2 1/2)

SE-1, 28 NOV 2024 to 26 DEC 2024

SE-1, 28 NOV 2024 to 26 DEC 2024