

LOC I-PNO <b>111.95</b>	APP CRS <b>316°</b>	Rwy Idg TDZE Apt Elev <b>9487</b> <b>578</b> <b>599</b>
----------------------------	------------------------	--

# ILS or LOC RWY 31

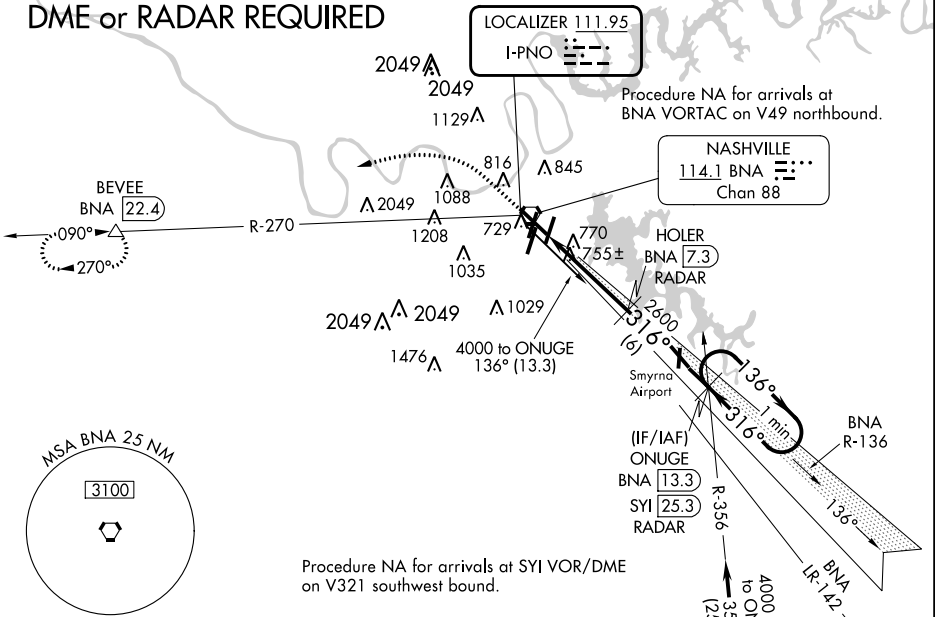
NASHVILLE INTL (BNA)

**▼** DME or radar required.  
**▲** DME from BNA VORTAC.  
 Simultaneous reception of I-PNO and BNA DME required.

MISSED APPROACH: Climb to 1400 then climbing left turn to 4000 on BNA VORTAC R-270 to BEVEE/BNA 22.4 DME and hold.

D-ATIS <b>135.1</b>	NASHVILLE APP CON <b>118.4 360.7</b>	NASHVILLE TOWER <b>118.6 257.8</b>	GND CON <b>121.9 348.6</b>	CLNC DEL <b>126.05</b>	CPDLC
------------------------	---	---------------------------------------	-------------------------------	---------------------------	-------

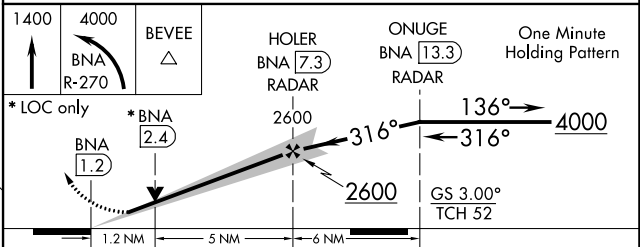
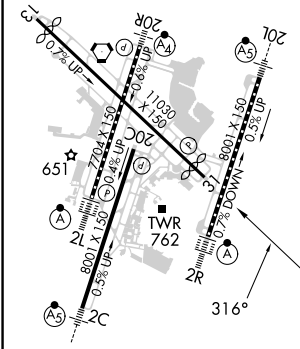
## DME or RADAR REQUIRED



SE-1, 28 NOV 2024 to 26 DEC 2024

SE-1, 28 NOV 2024 to 26 DEC 2024

ELEV 599	<b>D</b>	TDZE 578
----------	----------	----------



CATEGORY	A	B	C	D
S-ILS 31	778- <sup>3</sup> / <sub>4</sub> 200 (200- <sup>3</sup> / <sub>4</sub> )			
S-LOC 31	1020-1	442 (500-1)	1020-1 <sup>3</sup> / <sub>8</sub>	442 (500-1 <sup>3</sup> / <sub>8</sub> )
<b>C</b> CIRCLING	1100-1 501 (600-1)	1120-1 521 (600-1)	1200-1 <sup>3</sup> / <sub>4</sub> 601 (700-1 <sup>3</sup> / <sub>4</sub> )	1380-2 <sup>1</sup> / <sub>2</sub> 781 (800-2 <sup>1</sup> / <sub>2</sub> )