


LOC/DME I-SSX 109.35 Chan 30 (Y)	APP CRS 201°	Rwy Idg TDZE Apt Elev 8000 551 599
---	------------------------	--

ILS or LOC/DME RWY 20L

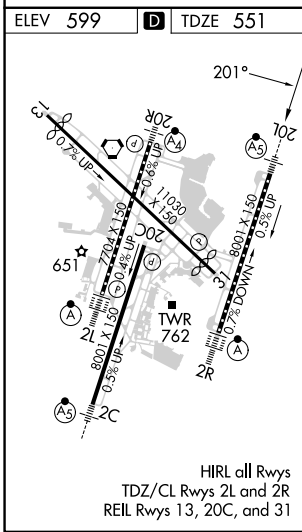
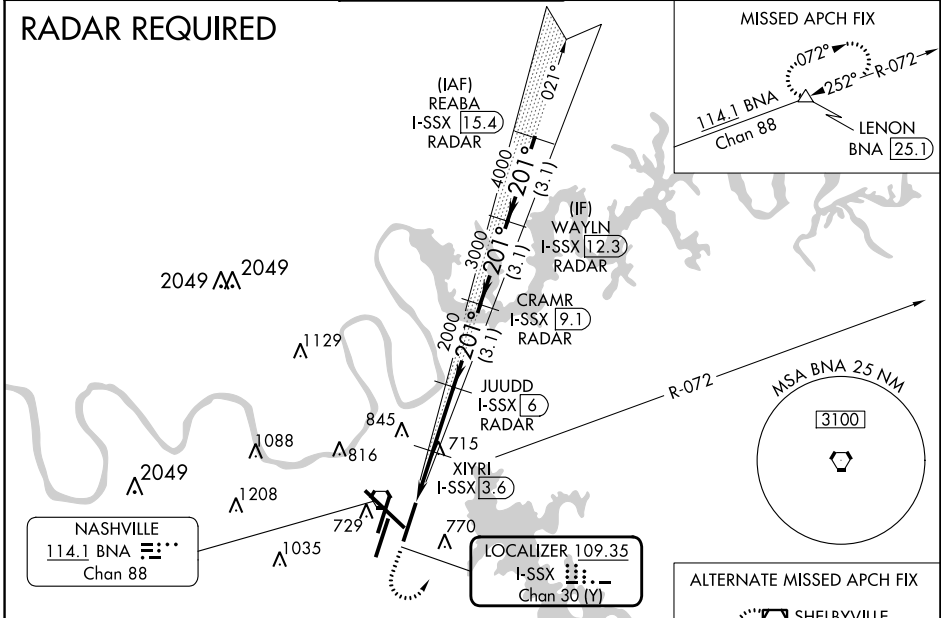
NASHVILLE INTL (BNA)

Simultaneous approach authorized with Rwy 20R.
DME required.
****RVR 1800 authorized with the use of FD or AP or HUD to DA.**

MALSRR
 MISSED APPROACH: Climb to 1300 then climbing left turn to 3000 on heading 040° and BNA VORTAC R-072 to LENON/BNA 25.1 DME and hold.

D-ATIS 135.1	NASHVILLE APP CON 118.4 360.7	NASHVILLE TOWER 118.6 257.8	GND CON 121.9 348.6	CLNC DEL 126.05	CPDLC
------------------------	---	---------------------------------------	-------------------------------	---------------------------	-------

RADAR REQUIRED



ELEV 599	D	TDZE 551					
			1300	3000	BNA R-072	LENON	REABA I-SSX 15.4 RADAR
			hdg 040°				
			*LOC only.	XIYRI I-SSX 3.6	JUUDD I-SSX 6 RADAR	CRAMR I-SSX 9.1 RADAR	WAYLN I-SSX 12.3 RADAR
			I-SSX 1.6	I-SSX 2.8	2000	2000	201° 5000
			1220*	3000	4000	5000	GS 3.00° TCH 55
			-1.2	-0.8	-2.4 NM	-3.1 NM	-3.1 NM
CATEGORY	A		B		C		D
S-ILS 20L	** 751/24 200 (200-½)						
S-LOC 20L	980/24		429 (400-½)		980/40		429 (400-¾)
C CIRCLING	1100-1 501 (600-1)		1120-1 521 (600-1)		1200-1¾ 601 (700-1¾)		1380-2½ 781 (800-2½)

SE-1, 28 NOV 2024 to 26 DEC 2024

SE-1, 28 NOV 2024 to 26 DEC 2024