

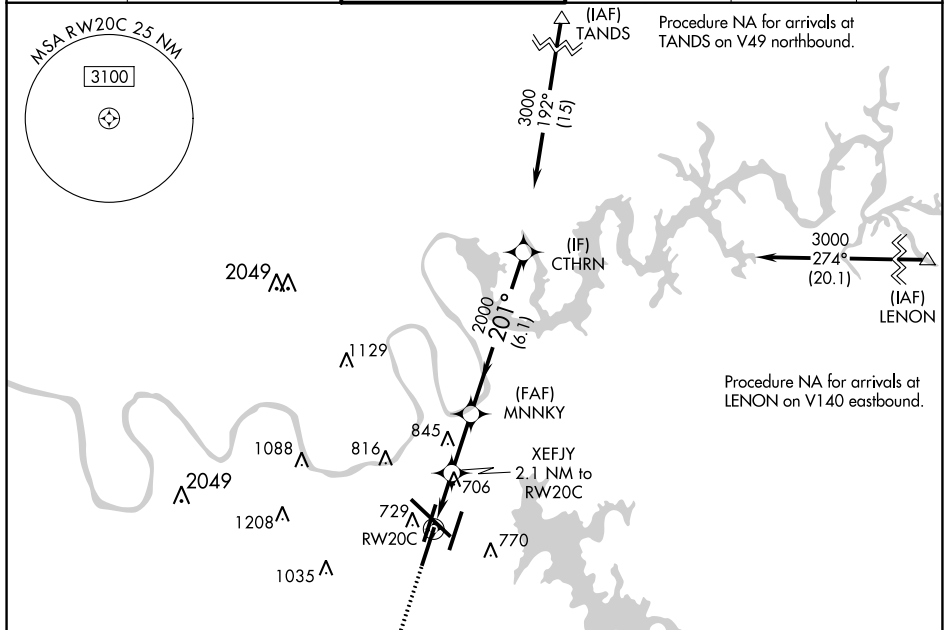
APP CRS 201°	Rwy Idg 8001
	TDZE 588
	Apt Elev 599

RNAV (GPS) RWY 20C

NASHVILLE INTL (BNA)

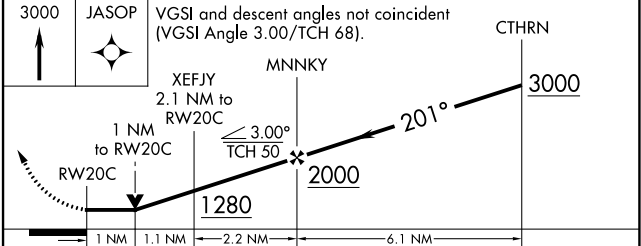
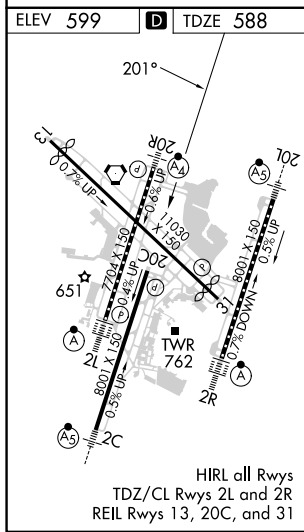
▽ ▲	DME/DME RNP-0.3 NA. Helicopter visibility reduction below ¾ SM NA.	MISSED APPROACH: Climb to 3000 direct JASOP and hold.
----------------------	---	---

D-ATIS 135.1	NASHVILLE APP CON 118.4 360.7	NASHVILLE TOWER 118.6 257.8	GND CON 121.9 348.6	CLNC DEL 126.05	CPDLC
------------------------	---	---------------------------------------	-------------------------------	---------------------------	-------



SE-1, 28 NOV 2024 to 26 DEC 2024

SE-1, 28 NOV 2024 to 26 DEC 2024



CATEGORY	A	B	C	D
LNAV MDA	960-1	372 (400-1)	960-1½	372 (400-1½)
C CIRCLING	1100-1 501 (600-1)	1120-1 521 (600-1)	1200-1¾ 601 (700-1¾)	1380-2½ 781 (800-2½)