

| | | |
|-------------|----------|-------------|
| APP CRS | Rwy Idg | 7702 |
| 201° | TDZE | 578 |
| | Apt Elev | 599 |

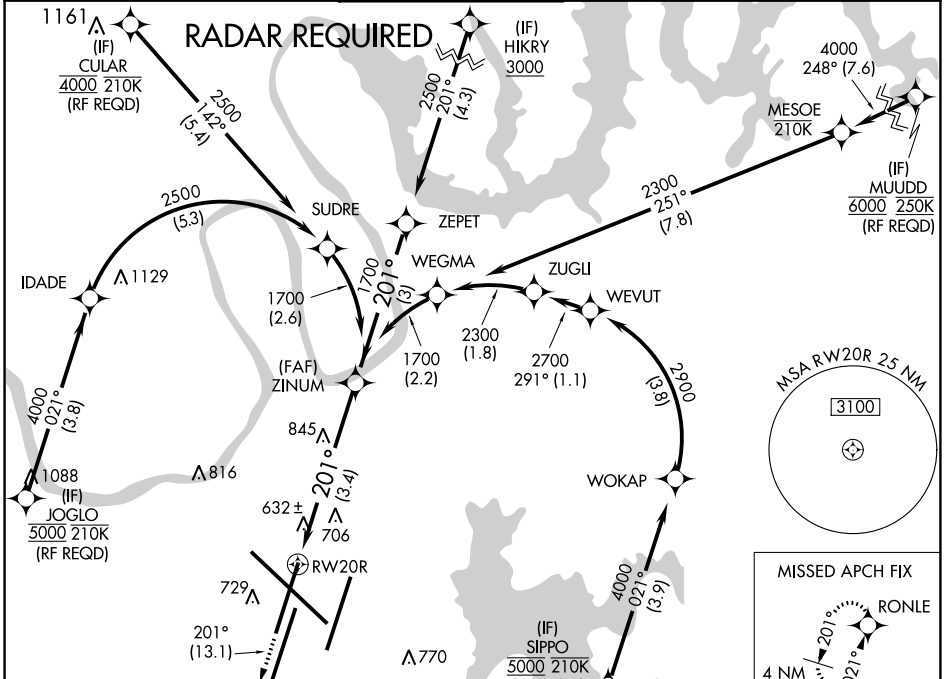
RNAV (RNP) Z RWY 20R

NASHVILLE INTL (BNA)

GPS required. Simultaneous approach authorized with Rwy 20L. Use of FD or AP providing RNAV track guidance required during simultaneous operations. For uncompensated Baro-VNAV systems, procedure NA below -11°C (13°F) or above 54°C (130°F). For inoperative MALSF, increase RNP 0.18 all Cats visibility to RVR 5600 and RNP 0.30 all Cats visibility to 1/2.

MALSF
 MISSED APPROACH: Climb to 3000 on track 201° to RONLE and hold.

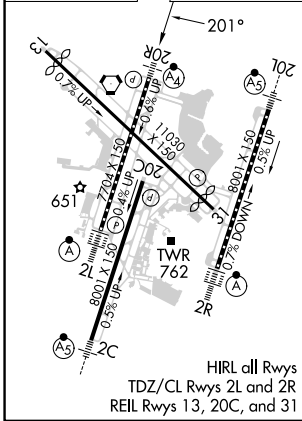
| | | | | | |
|------------------------|---|---------------------------------------|-------------------------------|---------------------------|-------|
| D-ATIS 135.1 | NASHVILLE APP CON 118.4 360.7 | NASHVILLE TOWER 118.6 257.8 | GND CON 121.9 348.6 | CLNC DEL 126.05 | CPDLC |
|------------------------|---|---------------------------------------|-------------------------------|---------------------------|-------|



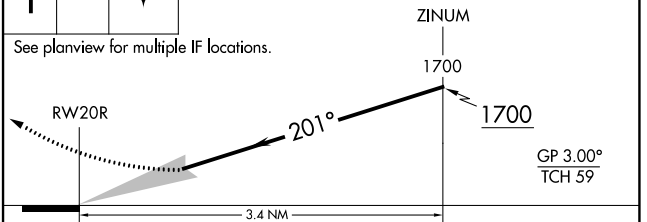
SE-1, 28 NOV 2024 to 26 DEC 2024

SE-1, 28 NOV 2024 to 26 DEC 2024

| | | |
|----------|----------|----------|
| ELEV 599 | D | TDZE 578 |
|----------|----------|----------|



3000 tr 201° **RONLE**
 VGSI and RNAV glidepath not coincident (VGSI Angle 3.00/TCH 79).



| CATEGORY | A | B | C | D |
|-------------|---|---------|-----------------|---|
| RNP 0.18 DA | | 927/42 | 349 (400-7/8) | |
| RNP 0.30 DA | | 1042/60 | 464 (500-1 1/4) | |

AUTHORIZATION REQUIRED