

# RNAV (RNP) Z RWY 2C

NASHVILLE INTL (BNA)

APP CRS	Rwy Idg	<b>7601</b>
<b>021°</b>	TDZE	<b>587</b>
	Apt Elev	<b>599</b>

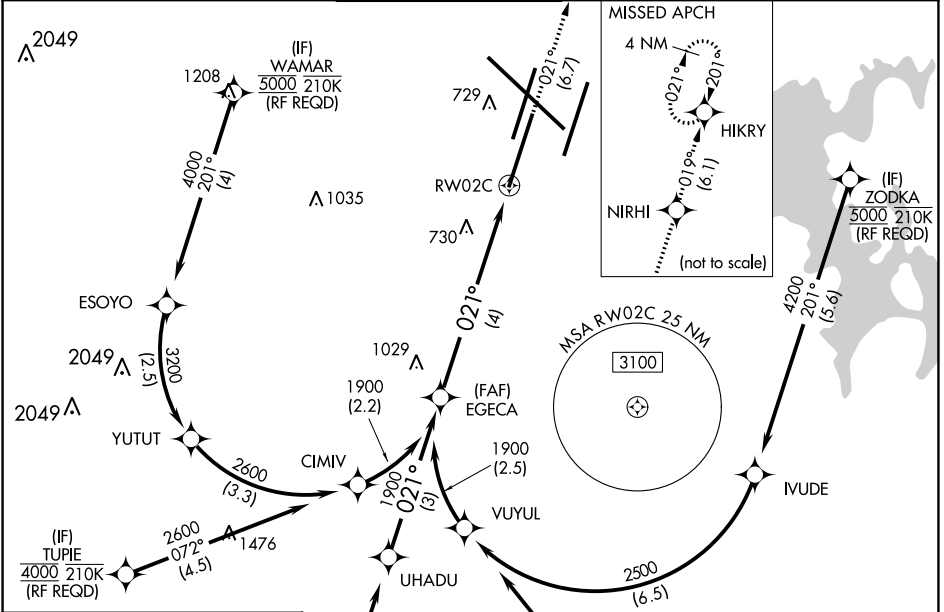
RNP AR APCH - GPS.

▼ For uncompensated Baro-VNAV systems, procedure NA below -11°C or above 54°C. Simultaneous approach authorized with Rwy 2R. Use of FD or AP providing RNAV track guidance required during simultaneous operations. For inop MALSR, increase RNP 0.30 visibility to 1½ mile.



MISSED APPROACH: Climb to 4000 on track 021° to NIRHI and on track 019° to HIKRY and hold, continue climb-in-hold to 4000.

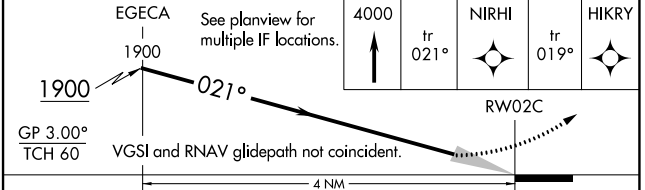
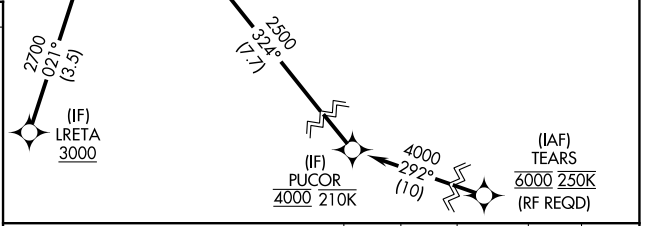
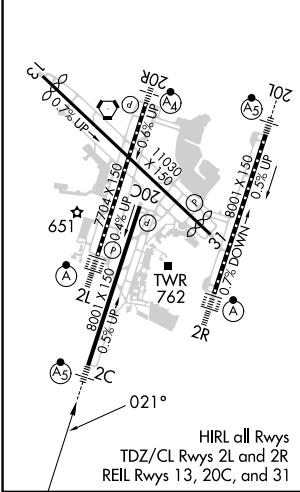
D-ATIS	NASHVILLE APP CON	NASHVILLE TOWER	GND CON	CLNC DEL	CPDLC
<b>135.1</b>	<b>118.4 360.7</b>	<b>118.6 257.8</b>	<b>121.9 348.6</b>	<b>126.05</b>	



SE-1, 28 NOV 2024 to 26 DEC 2024

SE-1, 28 NOV 2024 to 26 DEC 2024

ELEV 599	<b>D</b>	TDZE 587
----------	----------	----------



CATEGORY	A	B	C	D
RNP 0.15 DA		882/24	295 (300-½)	
RNP 0.30 DA		1067/57	480 (500-1½)	

### AUTHORIZATION REQUIRED