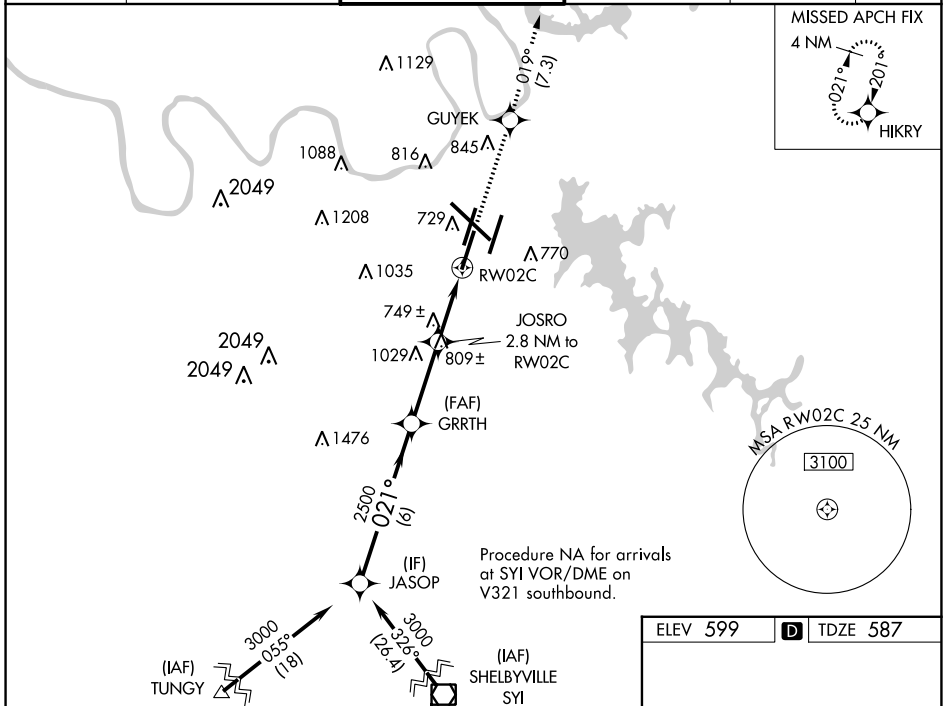


WAAS CH 70613 W02B	APP CRS 021°	Rwy Idg 7601 TDZE 587 Apt Elev 599
--	------------------------	---

RNAV (GPS) Y RWY 2C

NASHVILLE INTL (BNA)

RNP APCH - GPS.		MALSR		MISSED APPROACH: Climb to 4000 direct GUYEK and on track 019° to HIKRY and hold, continue climb-in-hold to 4000.	
<p>▼ For uncompensated Baro-VNAV systems, LNAV/VNAV NA below -11°C or above 54°C. Use of FD or AP providing RNAV track guidance required during simultaneous operations. LNAV procedure NA during simultaneous operations. Simultaneous approach authorized with Rwy 2R.</p> <p>▲ ** RVR 1800 authorized with use of FD or AP or HUD to DA.</p>					
D-ATIS 135.1	NASHVILLE APP CON 118.4 360.7	NASHVILLE TOWER 118.6 257.8	GND CON 121.9 348.6	CLNC DEL 126.05	CPDLC



SE-1, 28 NOV 2024 to 26 DEC 2024

SE-1, 28 NOV 2024 to 26 DEC 2024

VGSI and RNAV glidepath not coincident.		4000	GUYEK	tr 019°	HIKRY
JASOP	GRRTH	JOSRO			
3000	2500	2.8 NM to RW02C	*1.2 NM to RW02C		
GP 3.00°					
TCH 60					
	6 NM	3.1 NM	1.6 NM	1.2 NM	
CATEGORY	A	B	C	D	
LPV DA**	787/24		200 (200-½)		
LNAV/VNAV DA	1059/60		472 (500-¼)		
LNAV MDA	1000/24		413 (500-½)		
	1000/40		413 (500-¾)		
CIRCLING	1100-1	1120-1	1200-1¾	1380-2½	
	501 (600-1)	521 (600-1)	601 (700-1¾)	781 (800-2½)	

