

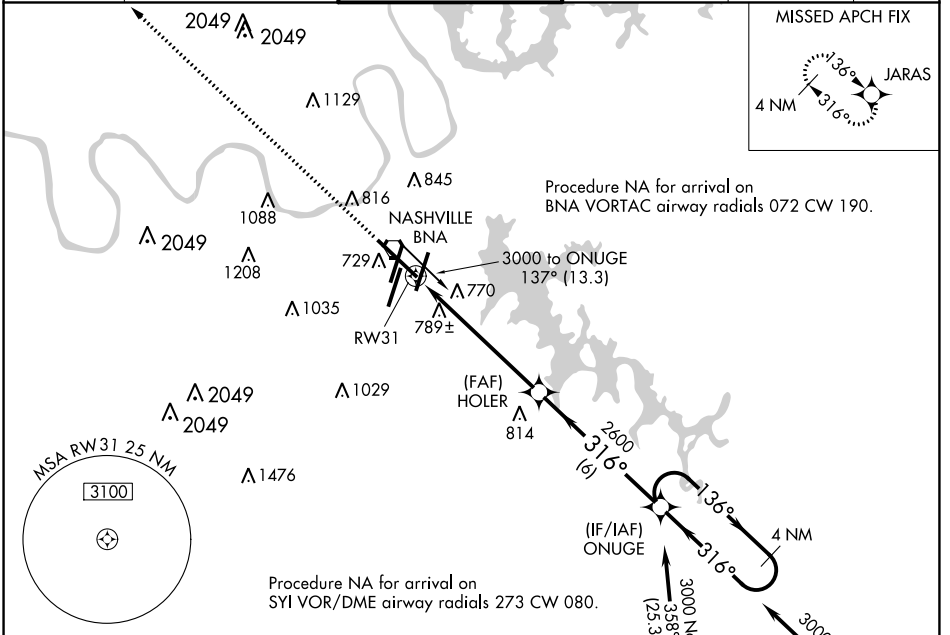
WAAS CH 65913 W31A	APP CRS 316°	Rwy Idg 9487 TDZE 578 Apt Elev 599
--	------------------------	---

RNAV (GPS) Y RWY 31

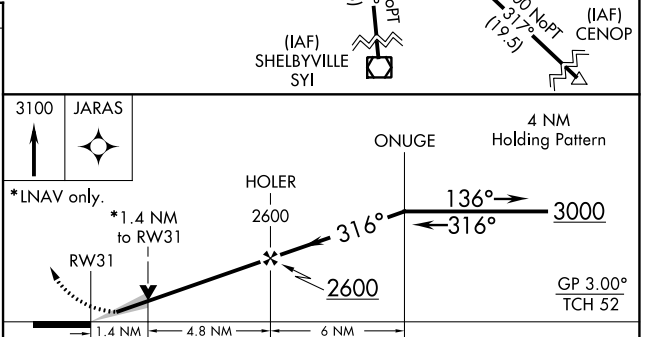
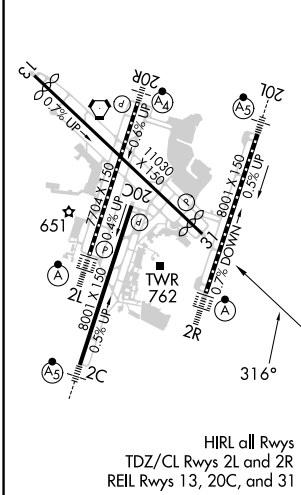
NASHVILLE INTL (BNA)

<p>▽ For uncompensated Baro-VNAV systems, LNAV/VNAV NA below -11°C (13°F) or above 54°C (130°F). ▲ DME/DME RNP-0.3 NA.</p>	<p>MISSED APPROACH: Climb to 3100 direct JARAS and hold.</p>
--	--

D-ATIS 135.1	NASHVILLE APP CON 118.4 360.7	NASHVILLE TOWER 118.6 257.8	GND CON 121.9 348.6	CLNC DEL 126.05	CPDLC
------------------------	---	---------------------------------------	-------------------------------	---------------------------	-------



ELEV 599	D	TDZE 578
----------	----------	----------



CATEGORY	A	B	C	D
LPV DA		778- ³ / ₄	200 (200- ³ / ₄)	
LNAV/VNAV DA		1061-1 ⁵ / ₈	483 (500-1 ⁵ / ₈)	
LNAV MDA	1060-1	482 (500-1)	1060-1 ³ / ₈	482 (500-1 ³ / ₈)
C CIRCLING	1100-1 501 (600-1)	1120-1 521 (600-1)	1200-1 ³ / ₄ 601 (700-1 ³ / ₄)	1380-2 ¹ / ₂ 781 (800-2 ¹ / ₂)

SE-1, 28 NOV 2024 to 26 DEC 2024

SE-1, 28 NOV 2024 to 26 DEC 2024