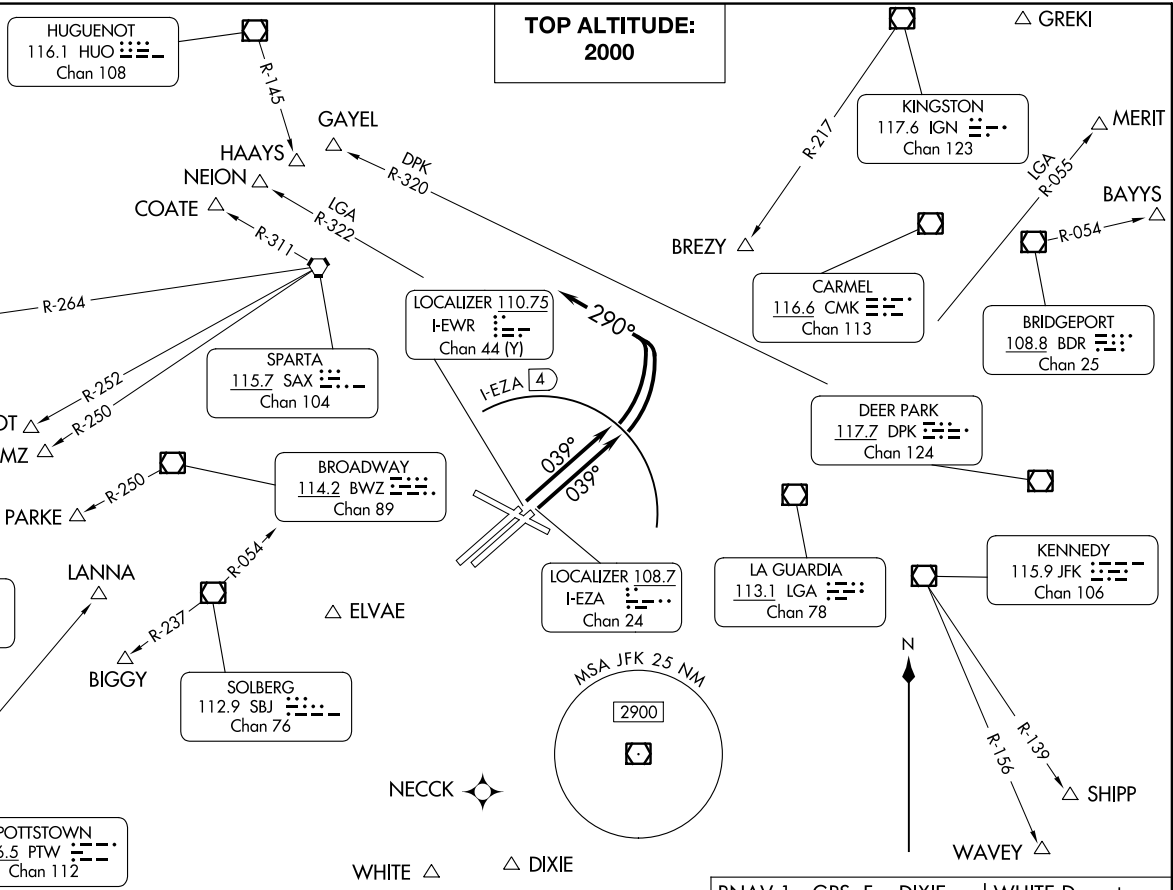


DEVIL ONE DEPARTURE  
(DEVIL1.EWR) 30NOV23  
NEWARK, NEW JERSEY  
NEWARK LIBERTY INTL (EWR)

NEWARK DEP CON  
119.2 379.9  
D-ATIS  
134.825  
CLNC DEL 118.85  
CPDLC  
GND CON 121.8  
NEWARK TOWER  
118.3 257.6



**TOP ALTITUDE:  
2000**

RNAV 1 - GPS. For DIXIE and WHITE Departures.  
RADAR and DME required.

(NARRATIVE ON FOLLOWING PAGE)

NOTE: Chart not to scale.

(DEVIL1.EWR) 24Z277  
DEVIL ONE DEPARTURE  
A1-285 (FAA)  
NEWARK LIBERTY INTL (EWR)  
NEWARK, NEW JERSEY

# DEVIL ONE DEPARTURE

AL-285 (FAA)

NEWARK, NEW JERSEY



## DEPARTURE ROUTE DESCRIPTION

TAKEOFF RUNWAY 4L/R: Climb on heading 039° until I-EZA 4 DME (use I-EWR 3.6 DME when I-EZA is NA), then climbing left to turn heading 290°, maintain 2000, thence....

...as per notes or for RADAR vectors to assigned route/fix. Expect clearance to filed altitude/flight level ten (10) minutes after departure. Thence....

LOST COMMUNICATIONS: For aircraft proceeding to COATE, NEION, HAAYS, GAYEL, or BREZY, if radio contact lost/not established with ATC, climb to 3000 after SBJ R-054.

NOTE: Rwy 4L/R, simultaneous reception of EWR ILS/DME required.

Depart Rwy 4L/R

Expect RADAR VECTORS to:

DP FIX	
BAYYS	BDR/BDR R-054
BIGGY	<b>SBJ</b> /SBJ R-237
BREZY	IGN R-217 to BREZY
COATE	SAX/SAX R-311
DIXIE	ELVAE/NECCK
ELIOT	SAX R-252
GAYEL	DPK R-320
HAAYS	HUO
LANNA	PTW R-059
MERIT	LGA R-055
NEION	LGA R-322
NEWEL	SAX/SAX R-264
PARKE	BWZ R-250
SHIPP	JFK/JFK R-139
WAVEY	JFK/JFK R-156
WHITE	ELVAE/NECCK
ZIMMZ	SAX R-250

NOTE: ELIOT may be accessed by all types of aircraft requesting a final altitude of 14000 or 16000.

NOTE: NEWEL may be accessed by turbo jet aircraft only requesting a final altitude at or above FL180.

NOTE: ZIMMZ may be accessed by all types of aircraft requesting a final altitude at or above FL180.

TAKEOFF MINIMUMS:

Rwy 4L: Standard with minimum climb of 365'/NM to 800.

Rwy 4R: Standard with minimum climb of 345'/NM to 800.

NE-2, 28 NOV 2024 to 26 DEC 2024

NE-2, 28 NOV 2024 to 26 DEC 2024