

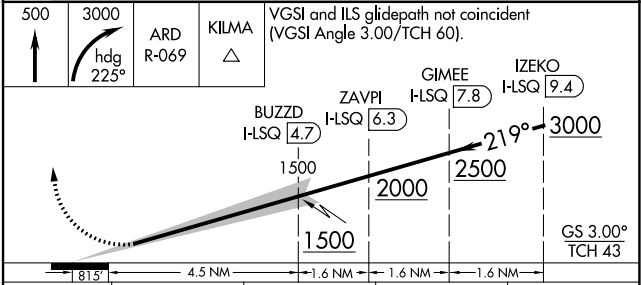
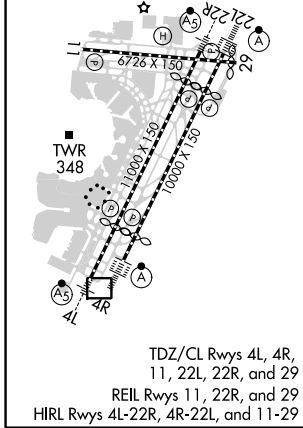
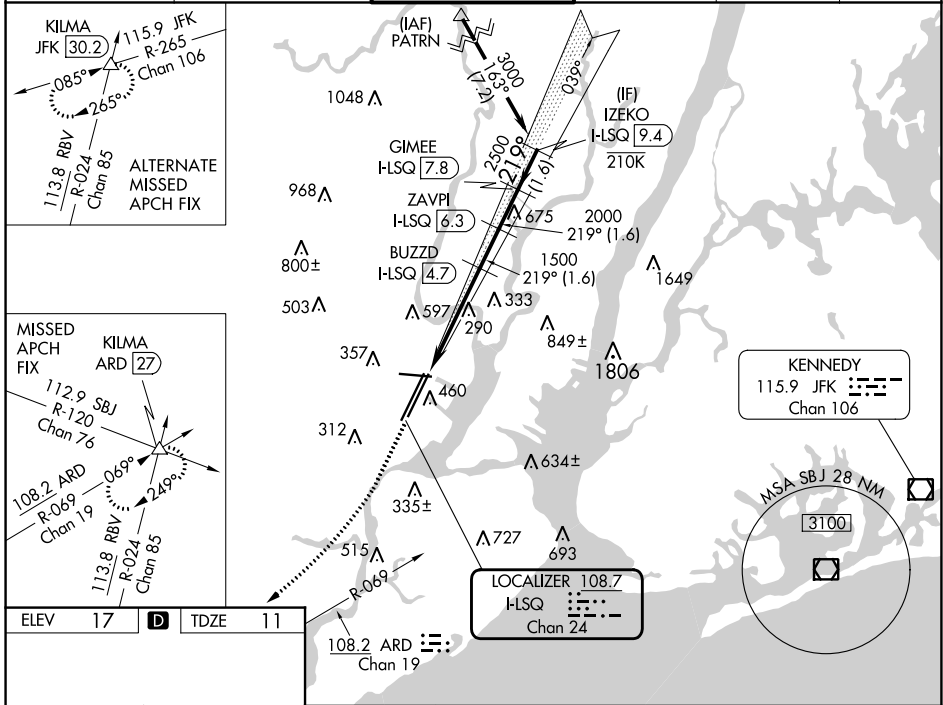
LOC/DME I-LSQ	APP CRS	Rwy Idg	8207
108.7	219°	TDZE	11
Chan 24		Apt Elev	17

ILS RWY 22L (SA CAT I)

NEWARK LIBERTY INTL (EWR)

RNP APCH - GPS.	ALSF-2	MISSED APPROACH: Climb to 500 then climbing right turn to 3000 on heading 225° and ARD VOR/DME R-069 to KILMA INT/ARD 27 DME and hold.
Aircraft not GPS equipped - RADAR required for procedure entry. DME required.		
Requires specific OPSPEC, MSPEC, or LOA approval.		

D-ATIS	NEWARK APP CON	NEWARK TOWER	GND CON	CLNC DEL	CPDLC
115.7 134.825	128.55 379.9	118.3 257.6	121.8	118.85	



CATEGORY	A	B	C	D
S-ILS 22L	RA 152/14 150 DA 161			

SA CATEGORY I ILS - SPECIAL AIRCREW & AIRCRAFT CERTIFICATION REQUIRED

NE-2, 28 NOV 2024 to 26 DEC 2024

NE-2, 28 NOV 2024 to 26 DEC 2024