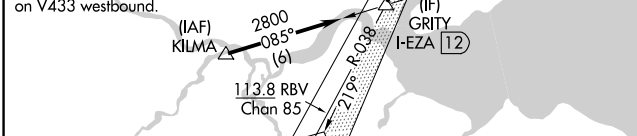
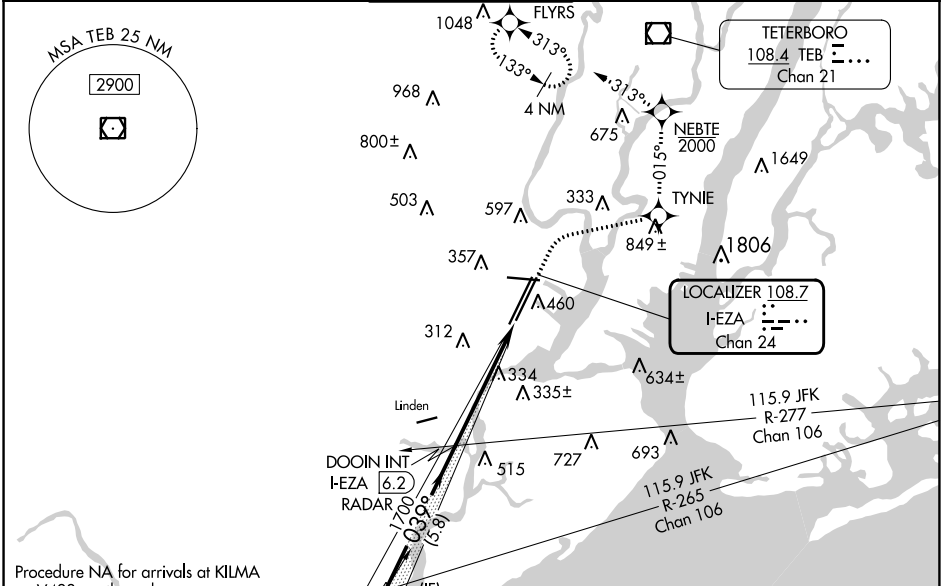


LOC/DME I-EZA 108.7 Chan 24	APP CRS 039°	Rwy Idg 8810 TDZE 11 Apt Elev 17
---	------------------------	---

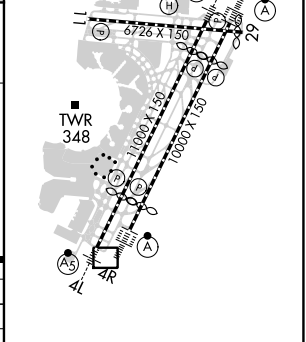
ILS RWY 4R (CAT II & III)

NEWARK LIBERTY INTL (EWR)

RNP APCH - GPS. RADAR required.		ALSF-2 	MISSED APPROACH: (Do not exceed 210K until NEBTE) Climb to 560 then climbing right turn to 2000 direct TYNIE and left turn on track 015° to NEBTE, cross NEBTE at or below 2000 then climbing left turn to 3000 on track 313° to FLYRS and hold, continue climb-in-hold to 3000.			
D-ATIS 115.7 134.825	NEWARK APP CON 128.55 379.9		NEWARK TOWER 118.3 257.6	GND CON 121.8	CLNC DEL 118.85	CPDLC



ELEV 17	D	TDZE 11
---------	----------	---------



560	2000	TYNIE	NEBTE	3000	FLYRS
↑	↪	↺	↻	↻	↻
		tr 015°	2000	tr 313°	

CATEGORY	A	B	C	D
S-ILS 4R	CAT II RA 100/12 100 DA 111			
S-ILS 4R	CAT III RVR 06			

CATEGORY II & III ILS - SPECIAL AIRCREW & AIRCRAFT CERTIFICATION REQUIRED

HIRL All Rwys
REL Rwys 11, 22R, and 29
TDZ/CL All Rwys

NE-2, 28 NOV 2024 to 26 DEC 2024

NE-2, 28 NOV 2024 to 26 DEC 2024