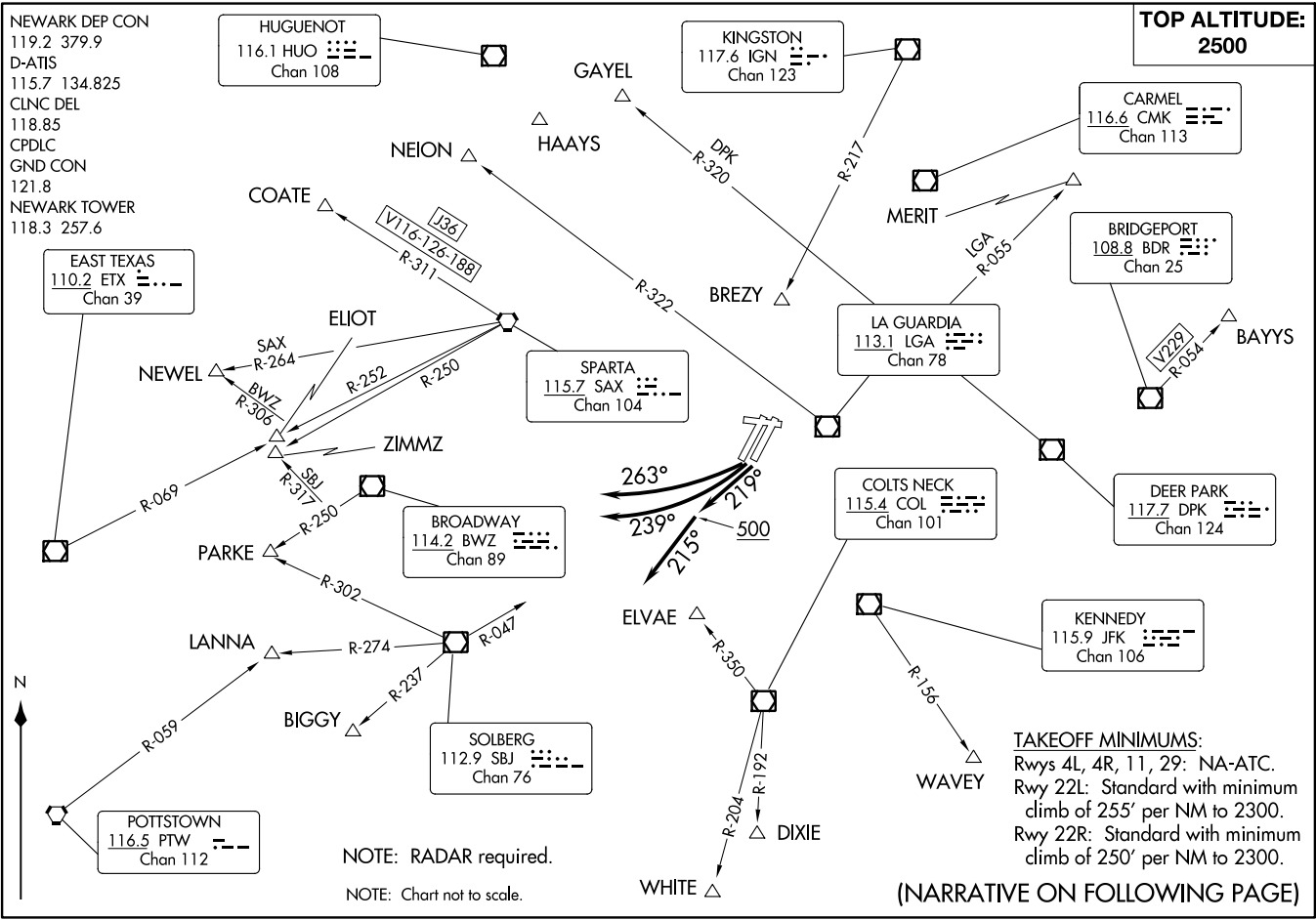


LIBERTY FIVE DEPARTURE
(LIB5.LIB) 10SEP20
NEWARK, NEW JERSEY
NEWARK LIBERTY INTL (EWR)



NEWARK DEP CON
119.2 379.9
D-ATIS
115.7 134.825
CLNC DEL
118.85
CPDLC
GND CON
121.8
NEWARK TOWER
118.3 257.6

EAST TEXAS
110.2 ETX
Chan 39

NEWEL
SAX R-264
BWZ R-308

ELIOT
R-252
R-250

SPARTA
115.7 SAX
Chan 104

BROADWAY
114.2 BWZ
Chan 89

LANNA
R-274

BIGGY
R-237

SOLBERG
112.9 SBJ
Chan 76

POTTSTOWN
116.5 PTW
Chan 112

NOTE: RADAR required.
NOTE: Chart not to scale.

KINGSTON
117.6 IGN
Chan 123

GAYEL
HAAYS

CARMEL
116.6 CMK
Chan 113

BRIDGEPORT
108.8 BDR
Chan 25

LA GUARDIA
113.1 LGA
Chan 78

DEER PARK
117.7 DPK
Chan 124

COLTS NECK
115.4 COL
Chan 101

KENNEDY
115.9 JFK
Chan 106

TAKEOFF MINIMUMS:
Rwys 4L, 4R, 11, 29: NA-ATC.
Rwy 22L: Standard with minimum
climb of 255' per NM to 2300.
Rwy 22R: Standard with minimum
climb of 250' per NM to 2300.

(NARRATIVE ON FOLLOWING PAGE)

TOP ALTITUDE:
2500

(LIB5.LIB) 24277
LIBERTY FIVE DEPARTURE
AL-285 (FAA)
NEWARK LIBERTY INTL (EWR)
NEWARK, NEW JERSEY



DEPARTURE ROUTE DESCRIPTION

TURNPIKE CLIMB: Climb on heading 219° to 500, then climb heading 215°, or as assigned by ATC, thence....

PARKWAY CLIMB: Climbing right turn to heading 239°, or as assigned by ATC, thence....

BUD CLIMB: Climbing right turn on heading 263°, or as assigned by ATC, thence....

....expect radar vectors to assigned route/fix. Maintain 2500. Expect clearance to filed altitude/flight level within 10 minutes after departure.

LOST COMMUNICATIONS: For aircraft proceeding to COATE, NEION, HAAYS, GAYEL, or BREZY, if radio contact lost/not established with ATC, climb to 3000' after SBJ R-047.

NOTE: Rwy 22L/R Departures:

NOTE: BAYYS departures expect vectors to BDR/BDR R-054.

NOTE: BIGGY departures expect vectors to SBJ/SBJ R-237.

NOTE: BREZY departures expect vectors to IGN R-217 to BREZY.

NOTE: COATE departures expect vectors to SAX/SAX R-311.

NOTE: ELIOT departures expect vectors to SAX R-252 between 2300 and 0700 local. ELIOT departures expect vectors to SBJ or ETX. ELIOT may be accessed by all type aircraft requesting final altitude of 14000 or 16000.

NOTE: GAYEL departures expect vectors to DPK R-320.

NOTE: HAAYS departures expect vectors to HUO.

NOTE: LANNA departures expect vectors to SBJ/SBJ R-274.

NOTE: MERIT departures expect vectors to LGA R-055.

NOTE: NEION departures expect vectors to LGA R-322.

NOTE: NEWEL departures expect vectors to SAX R-264. NEWEL may be accessed by turbojet aircraft only requesting a final altitude at or above FL180.

NOTE: PARKE departures expect vectors to SBJ/SBJ R-302.

NOTE: WAVEY departures expect vectors to JFK/JFK R-156.

NOTE: WHITE/DIXIE departures expect vectors to COL R-350 or ELVAE/COL thence to WHITE on COL R-204 or to DIXIE on COL R-192.

NOTE: ZIMMZ departures expect vectors to SAX R-250. ZIMMZ may be accessed by all type of aircraft requesting a final altitude at or above FL180.

NE-2, 28 NOV 2024 to 26 DEC 2024

NE-2, 28 NOV 2024 to 26 DEC 2024