

PORT FOUR DEPARTURE (RNAV)
(PORT4.PORT) 29MAR18

PORT FOUR DEPARTURE (RNAV)
(PORT4.PORT) 24Z77

A1-285 (FAA)

NEWARK LIBERTY INTL (E/W/R)
NEWARK, NEW JERSEY

NEWARK DEP CON
119.2 379.9
D-ATIS
134.825
CLNC DEL
118.85
CPDLC
GND CON
121.8
NEWARK TOWER
118.3 257.6

NOTE: Chart not to scale.

**TOP ALTITUDE:
2500**

GAYEL Δ

GREKI Δ

HAAYS Δ

CARMEL
CMK \square

MERIT Δ

NEION Δ

BREZY Δ

BAYYS Δ

COATE Δ

Δ

NOTE: BAYYS departure expect vectors to BDR VOR/DME direct BAYYS.

\square BRIDGEPORT
BDR

NOTE: GREKI departures expect vectors to CMK VOR/DME direct GREKI.

NOTE: MERIT departures expect vectors to LGA VOR/DME direct MERIT.

NOTE: COATE departures expect vectors to BDR VOR/DME direct COATE.
NOTE: HAAYS departures expect vectors to HAAYS.

ELIOT Δ

PARKE Δ

LANNA Δ

BIGGY Δ

FENLY \diamond

RIETA \diamond

COLTS NECK
COL \square

DIXIE Δ

WHITE Δ

SIRLY \diamond

PORTT \diamond

ELVAE Δ

BAGGA
220K

WAVEY Δ

\square LA GUARDIA
LGA

\square KENNEDY
JFK

NOTE: DIXIE departures expect vectors to ELVAE direct COL VOR/DME direct DIXIE.

NOTE: WAVEY departures expect vectors to JFK VOR/DME direct WAVEY.

NOTE: WHITE departures expect vectors to ELVAE direct COL VOR/DME direct WHITE.

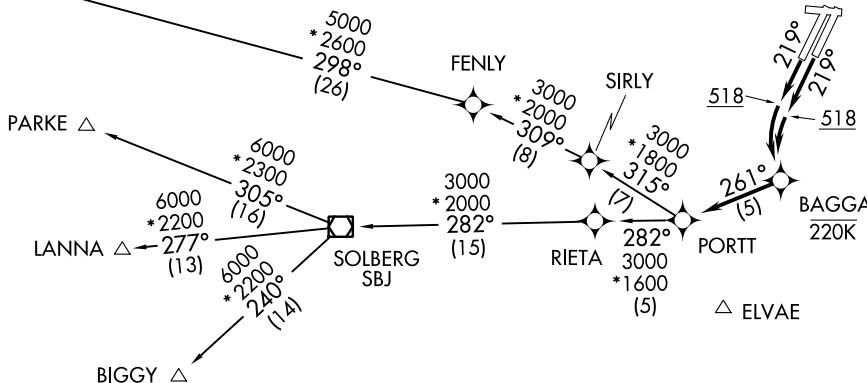
NOTE: DME/DME/IRU or GPS required.

NOTE: RADAR required.

NOTE: RNAV 1.

NOTE: Do not exceed 220K until crossing BAGGA.

(NARRATIVE ON FOLLOWING PAGE)



TAKEOFF MINIMUMS:

Rwys 4R, 4L, 11, 29: NA-ATC.

Rwy 22L, 22R: Standard with a minimum climb of 500' per NM to 518.

NEWARK, NEW JERSEY
NEWARK LIBERTY INTL (E/W/R)

PORTT FOUR DEPARTURE (RNAV)



DEPARTURE ROUTE DESCRIPTION

TAKEOFF RUNWAYS 22L/22R: Climb heading 219° to 518, then left turn direct BAGGA, then on depicted route to PORTT, thence

. . . . on assigned transition, or on vectors to assigned departure fix, maintain 2500. Expect clearance to filed altitude/flight level within 10 minutes after departure.

BIGGY TRANSITION (PORTT4.BIGGY):

ELIOT TRANSITION (PORTT4.ELIOT):

LANNA TRANSITION (PORTT4.LANNA):

PARKE TRANSITION (PORTT4.PARKE):

NE-2, 28 NOV 2024 to 26 DEC 2024

NE-2, 28 NOV 2024 to 26 DEC 2024