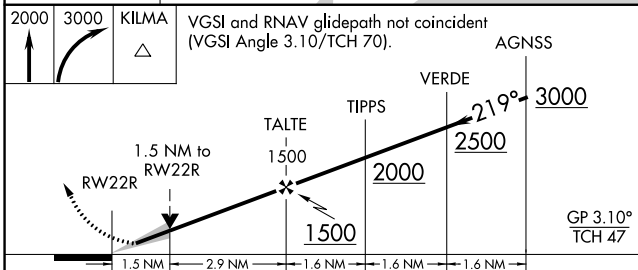
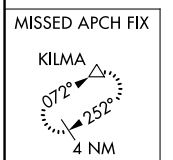
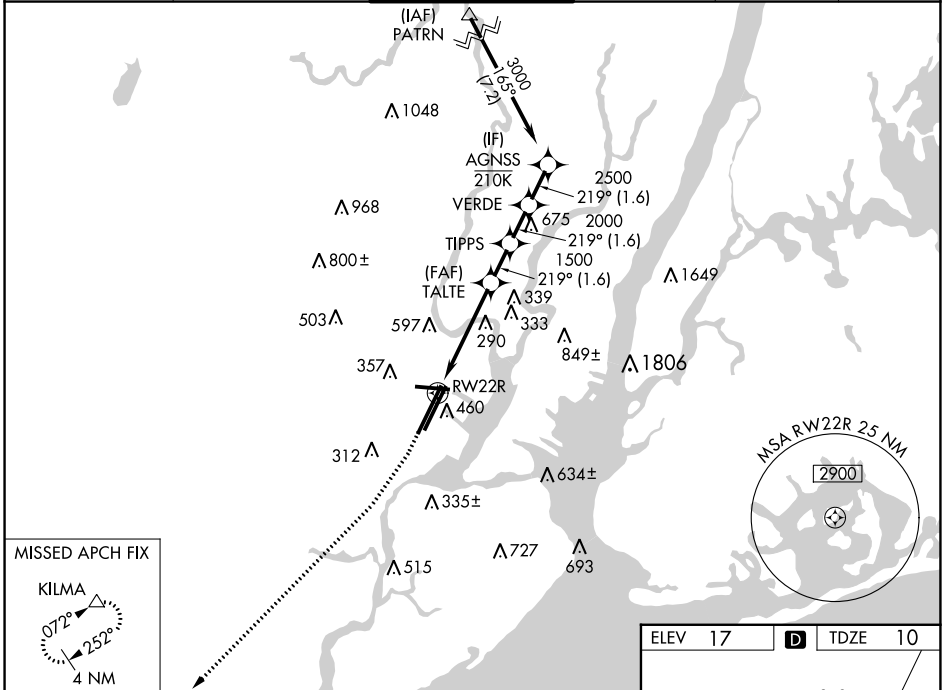


WAAS CH <b>61244</b> <b>W22B</b>	APP CRS <b>219°</b>	Rwy Idg <b>9560</b> TDZE <b>10</b> Apt Elev <b>17</b>
--	------------------------	---

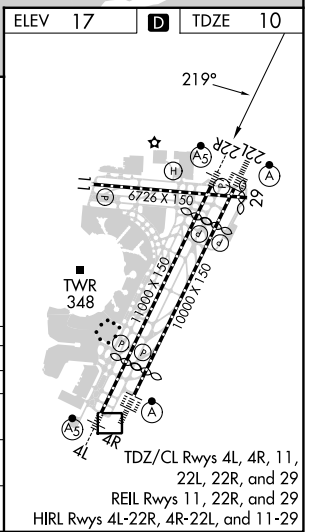
# RNAV (GPS) RWY 22R

NEWARK LIBERTY INTL (EWR)

RNP APCH - GPS.			MALSR	MISSED APPROACH: Climb to 2000, then climbing right turn to 3000 direct KILMA and hold.		
<p><b>▼</b> Circling NA south of Rwy 11-29. When Circling to Rwy 29 at night, operational VGSI required, remain on or above VGSI glidepath until threshold. For uncompensated Baro-VNAV systems, LNAV/VNAV NA below -12°C or above 54°C.</p>						
D-ATIS <b>115.7 134.825</b>	NEWARK APP CON <b>128.55 379.9</b>	NEWARK TOWER <b>118.3 257.6</b>	GND CON <b>121.8</b>	CLNC DEL <b>118.85</b>	CPDLC	



CATEGORY	A	B	C	D
LPV DA		210/18	200 (200-½)	
LNAV/VNAV DA		468/45	458 (500-¾)	
LNAV MDA	560/24	550 (600-½)	560/60	550 (600-1¼)
<b>C</b> CIRCLING	660-1	643 (700-1)	900-2¾ 883 (900-2¾)	900-3 883 (900-3)



NE-2, 28 NOV 2024 to 26 DEC 2024

NE-2, 28 NOV 2024 to 26 DEC 2024