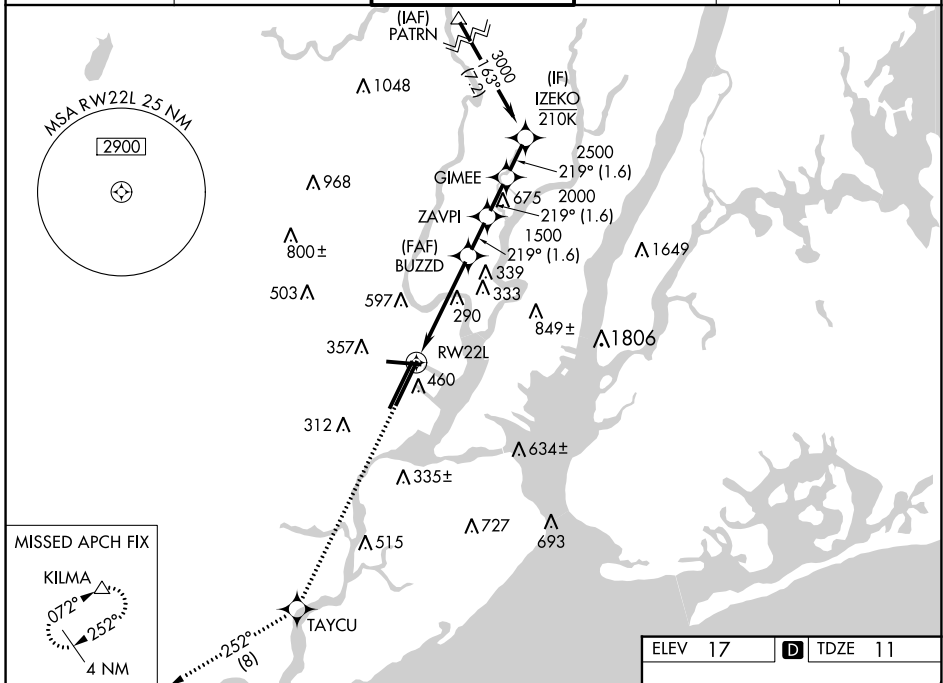


WAAS CH 70324 W22A	APP CRS 219°	Rwy Idg 8207 TDZE 11 Apt Elev 17
--	------------------------	---

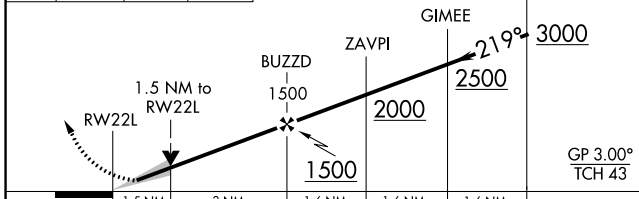
RNAV (GPS) Z RWY 22L

NEWARK LIBERTY INTL (EWR)

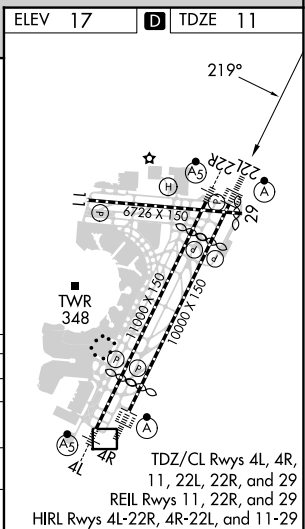
RNP APCH - GPS.		NEWARK TOWER 118.3 257.6		GND CON 121.8	CLNC DEL 118.85	CPDLC
<p>⚠ Circling NA south of Rwy 11-29. For uncompensated Baro-VNAV systems, LNAV/VNAV NA below -12°C or above 54°C. When Circling to Rwy 29 at night, operational VGSI required, remain on or above VGSI glidepath until threshold.</p>		<p>ALSF-2 (A)</p>		<p>MISSED APPROACH: Climb to 3000 direct TAYCU and on track 252° to KILMA and hold.</p>		



3000	TAYCU	tr 252°	KILMA	VGSI and RNAV glidepath not coincident (VGSI Angle 3.00/TCH 60).
------	-------	---------	-------	--



CATEGORY	A	B	C	D
LPV DA		211/18	200 (200-½)	
LNAV/VNAV DA		462/45	451 (500-¾)	
LNAV MDA	560/24 549 (600-½)		560/60 549 (600-1¼)	
C CIRCLING	660-1 643 (700-1)		900-2¾ 883 (900-2¾)	900-3 883 (900-3)



RNAV (GPS) Z RWY 22L

NE-2, 28 NOV 2024 to 26 DEC 2024

NE-2, 28 NOV 2024 to 26 DEC 2024