

ATIS 126.75
GND CON
121.8
DUTCHESS COUNTY TOWER ★
124.0 (CTAF) 269.15
NEW YORK DEP CON
132.75 363.1

**TOP ALTITUDE:
3000**

HANCOCK
116.8 HNK
Chan 115

KINGSTON
117.6 IGN
Chan 123

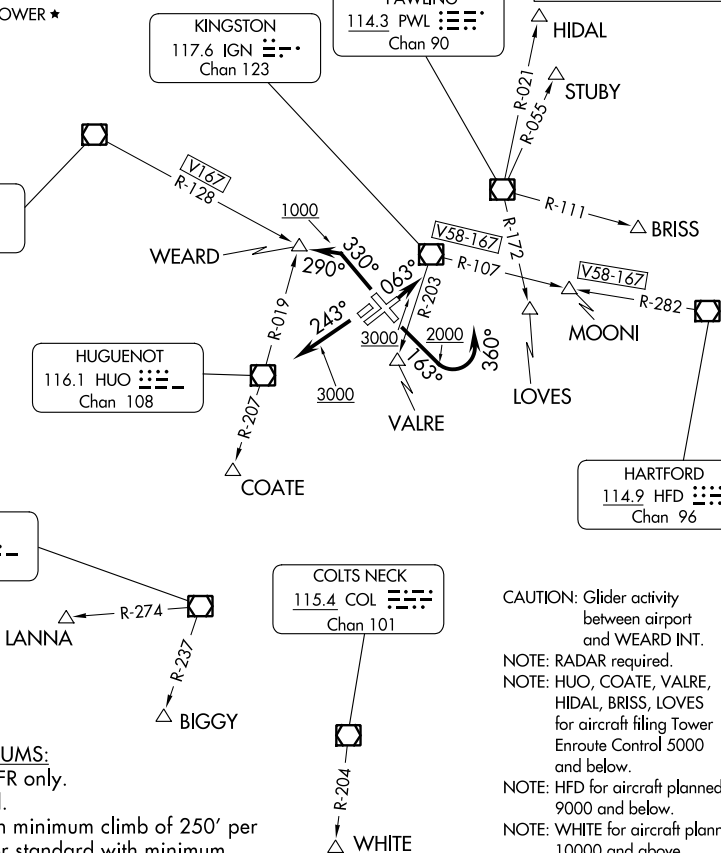
PAWLING
114.3 PWL
Chan 90

HUGUENOT
116.1 HUG
Chan 108

SOLBERG
112.9 SBJ
Chan 76

COLTS NECK
115.4 COL
Chan 101

HARTFORD
114.9 HFD
Chan 96



TAKE-OFF MINIMUMS:

- Rwy 7, 25: NA-VFR only.
- Rwy 24: Standard.
- Rwy 6: 500-3 with minimum climb of 250' per NM to 1000 or standard with minimum climb of 537' per NM to 800.
- Rwy 15: Standard with minimum climb of 370' per NM to 700.
- Rwy 33: Standard with minimum climb of 270' per NM to 1500.

- CAUTION: Glider activity between airport and WEARD INT.
- NOTE: RADAR required.
- NOTE: HUGO, COATE, VALRE, HIDAL, BRISS, LOVES for aircraft filing Tower Enroute Control 5000 and below.
- NOTE: HFD for aircraft planned 9000 and below.
- NOTE: WHITE for aircraft planned 10000 and above.
- NOTE: Chart not to scale.

DEPARTURE ROUTE DESCRIPTION

TAKEOFF RUNWAY 6: Climb heading 063° to 3000, thence. . . .

TAKEOFF RUNWAY 15: Climb heading 163° to 2000, then turn left heading 360°, maintain 3000, thence. . . .

TAKEOFF RUNWAY 24: Climb heading 243° to 3000, thence. . . .

TAKEOFF RUNWAY 33: Climb heading 330° to 1000, then turn left heading 290°, maintain 3000, thence. . . .

. . . . via radar vectors to assigned Route/Fix, expect clearance to filed altitude/flight level within ten (10) minutes after departure.

LOST COMMUNICATIONS: If radio contact is not established/lost within 2 minutes after departure, proceed on course and climb to 5000. Ten minutes after departure, climb to filed altitude/flight level.