

VOR/DME IGN 117.6 Chan 123	APP CRS 242°	Rwy Idg TDZE Apt Elev	4886 157 164
---	------------------------	-----------------------------	---

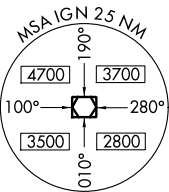
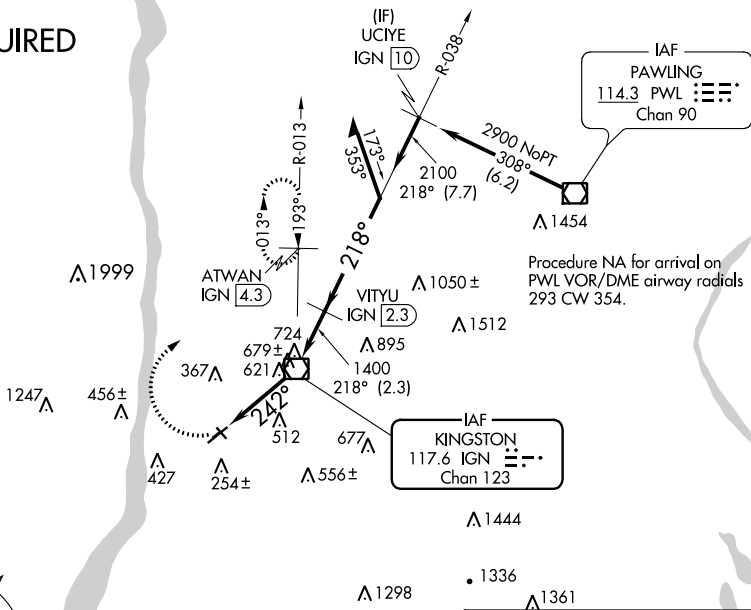
VOR RWY 24
HUDSON VALLEY RGNL (POU)

⚠ Circling NA to Rws 7 and 25. Circling Rwy 15, 33 NA at night. Rwy 24 helicopter visibility reduction below $\frac{3}{4}$ SM NA. Rwy 15, 33 helicopter visibility reduction below 1 NA. DME required. When local altimeter not received, use Montgomery altimeter setting and increase all MDAs 80 feet and Circling visibility Cat A $\frac{1}{4}$ SM.

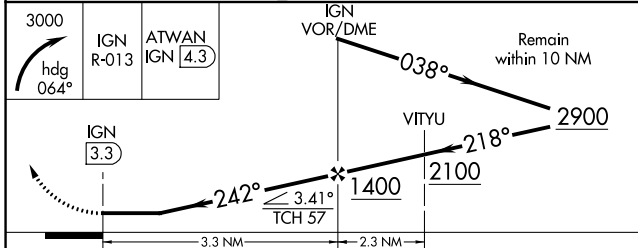
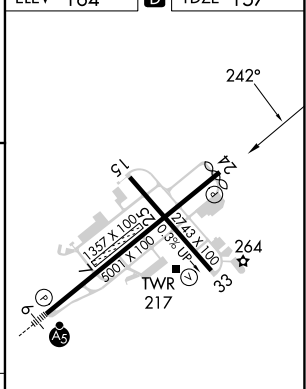
MISSED APPROACH: Climbing right turn to 3000 on heading 064° and IGN VOR/DME R-013 to ATWAN/4.3 DME and hold, continue climb-in-hold to 3000.

ATIS 126.75	NEW YORK APP CON 132.75 363.1	DUTCHESS COUNTY TOWER * 124.0 (CTAF) 0 269.15	GND CON 121.8	CLNC DEL 121.8	UNICOM 122.95
-----------------------	---	---	-------------------------	--------------------------	-------------------------

DME REQUIRED



ELEV 164	D TDZE 157
----------	------------



CATEGORY	A	B	C	D
S-24	940-1 783 (800-1)	940-1 $\frac{1}{4}$ 783 (800-1 $\frac{1}{4}$)	940-2 $\frac{1}{2}$	783 (800-2 $\frac{1}{2}$)
CIRCLING	940-1 776 (800-1)	940-1 $\frac{1}{4}$ 776 (800-1 $\frac{1}{4}$)	940-2 $\frac{1}{2}$ 776 (800-2 $\frac{1}{2}$)	1080-3 916 (1000-3)

MRL Rwy 15-33
HRL Rwy 6-24
REIL Rwy 24
REIL Rwy 33

NE-2, 28 NOV 2024 to 26 DEC 2024

NE-2, 28 NOV 2024 to 26 DEC 2024