

VOR/DME IGN 117.6 Chan 123	APP CRS 242°	Rwy Idg TDZE Apt Elev 164	N/A N/A
--	------------------------	---	--------------------------

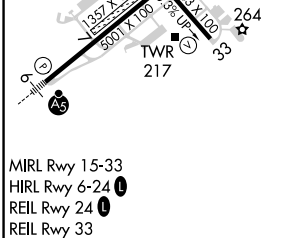
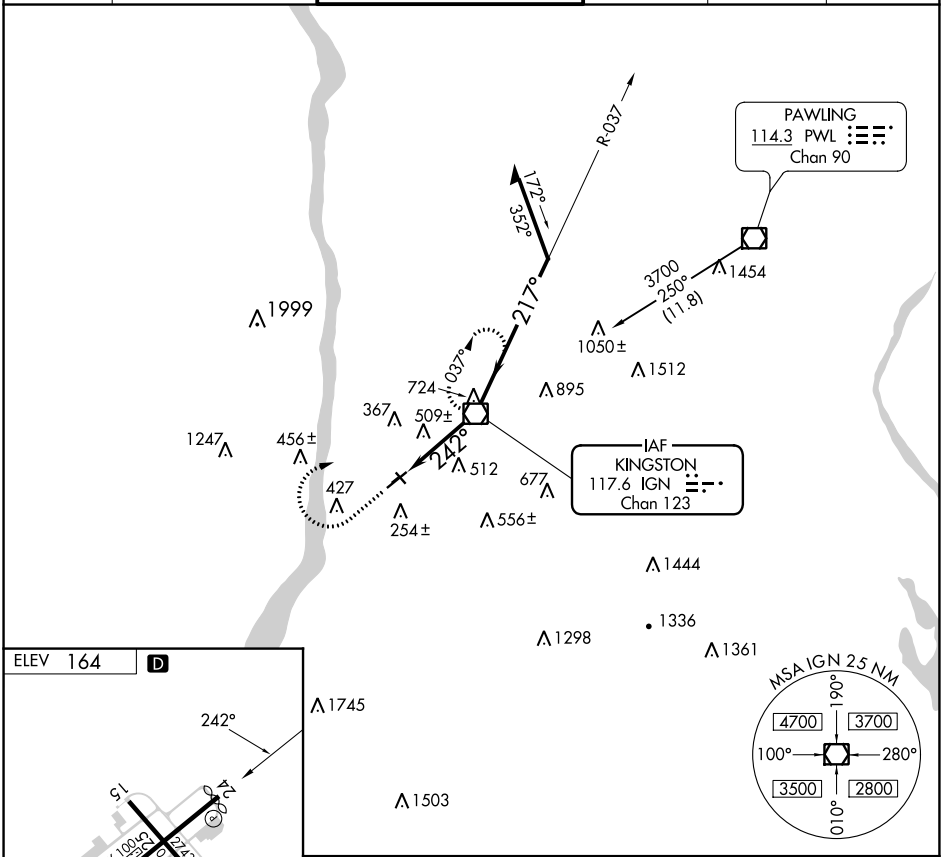
VOR-A

HUDSON VALLEY RGNL (POU)

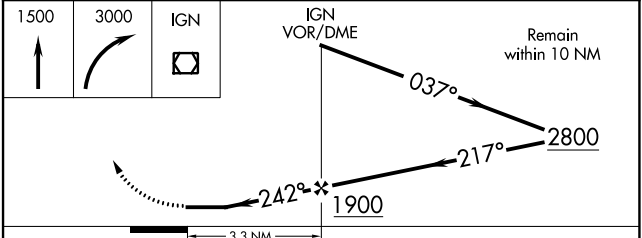
⚠ Circling NA to Rwys 7 and 25. Circling Rwy 15, 33 NA at night.
⚠ Rwy 15, 33 helicopter visibility reduction below 1 SM NA. When local altimeter not received, use Montgomery altimeter setting and increase all MDAs 80 feet and visibility Cat C ¼ SM.

MISSED APPROACH: Climb to 1500 then climbing right turn to 3000 direct IGN VOR/DME and hold, continue climb-in-hold to 3000.

ATIS 126.75	NEW YORK APP CON 132.75 363.1	DUTCHESS COUNTY TOWER * 124.0 (CTAF) 0 269.15	GND CON 121.8	CLNC DEL 121.8	UNICOM 122.95
-----------------------	---	--	-------------------------	--------------------------	-------------------------



ELEV	164	D										
<table border="1"> <tr> <td>1500</td> <td>3000</td> <td>IGN</td> </tr> <tr> <td>↑</td> <td>↷</td> <td>◻</td> </tr> </table>			1500	3000	IGN	↑	↷	◻				
1500	3000	IGN										
↑	↷	◻										
<table border="1"> <tr> <td>IGN VOR/DME</td> <td>Remain within 10 NM</td> </tr> <tr> <td>037°</td> <td>2800</td> </tr> <tr> <td>217°</td> <td>1900</td> </tr> <tr> <td>242°</td> <td>1900</td> </tr> <tr> <td colspan="2">3.3 NM</td> </tr> </table>			IGN VOR/DME	Remain within 10 NM	037°	2800	217°	1900	242°	1900	3.3 NM	
IGN VOR/DME	Remain within 10 NM											
037°	2800											
217°	1900											
242°	1900											
3.3 NM												



FAF to MAP 3.3 NM					
Knots	60	90	120	150	180
Min:Sec	3:18	2:12	1:39	1:19	1:06
CATEGORY	A	B	C	D	
CIRCLING	760-1 596 (600-1)	840-1 676 (700-1)	940-2¼ 776 (800-2¼)	1080-3 916 (1000-3)	

NE-2, 28 NOV 2024 to 26 DEC 2024

NE-2, 28 NOV 2024 to 26 DEC 2024