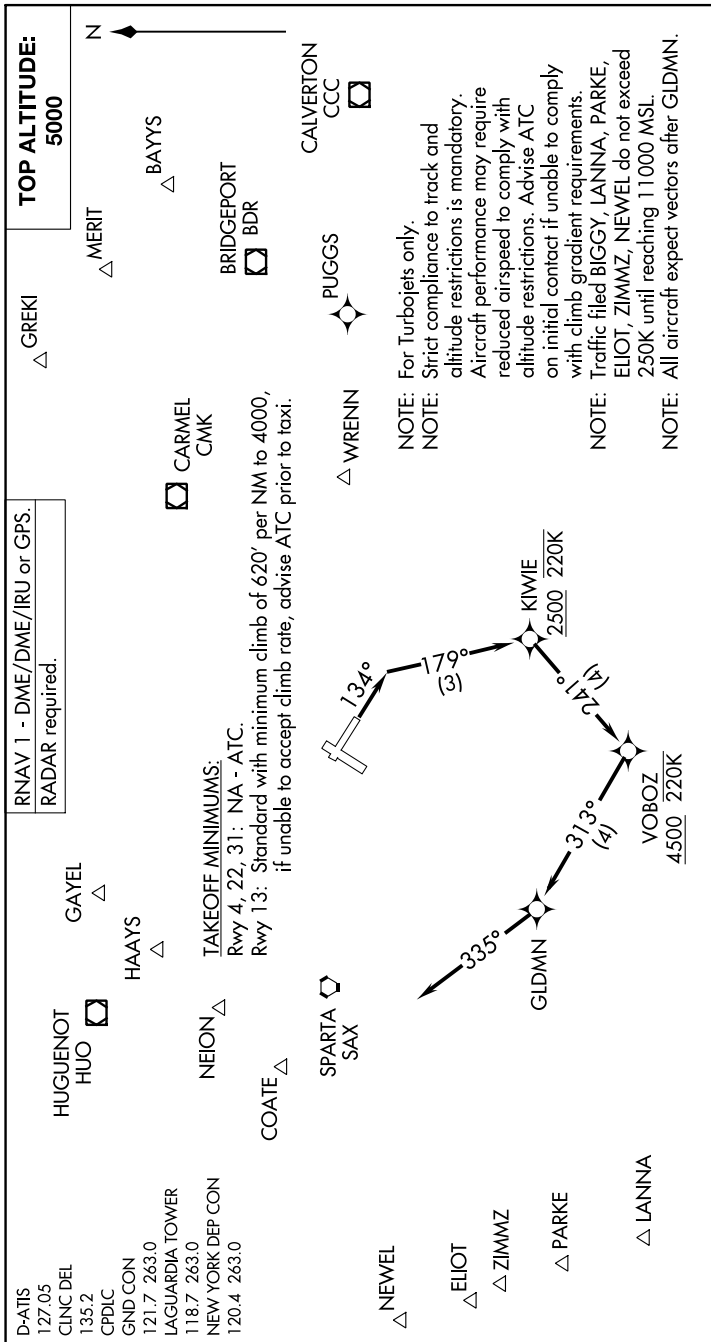


# GLDMN EIGHT DEPARTURE (RNAV)

NE-2, 28 NOV 2024 to 26 DEC 2024



**RNAV 1 - DME/DME/IRU or GPS.**  
RADAR required.

**TAKEOFF MINIMUMS:**  
Rwy 4, 22, 31: NA - ATC.  
Rwy 13: Standard with minimum climb of 620' per NM to 4000, if unable to accept climb rate, advise ATC prior to taxi.

**DEPARTURE ROUTE DESCRIPTION**

**TAKEOFF RUNWAY 13:** Climb on heading 134° to intercept course 179° to cross KIWIE at or above 2500 and at or below 220K, then on track 241° to cross VOBOZ at or above 4500 and at or below 220K, then on track 313° to GLDMN, then on track 335° for RADAR vector on course. Maintain 5000 or as assigned by ATC. Expect clearance to filed altitude/flight level 10 minutes after departure.

**ALL AIRCRAFT: ATC CLIMB GRADIENT:** If unable to accept climb rate advise ATC prior to taxi.  
Rwy 13: 620' per NM to 4000.

**NOTE:** Chart not to scale.

NE-2, 28 NOV 2024 to 26 DEC 2024

# GLDMN EIGHT DEPARTURE (RNAV)