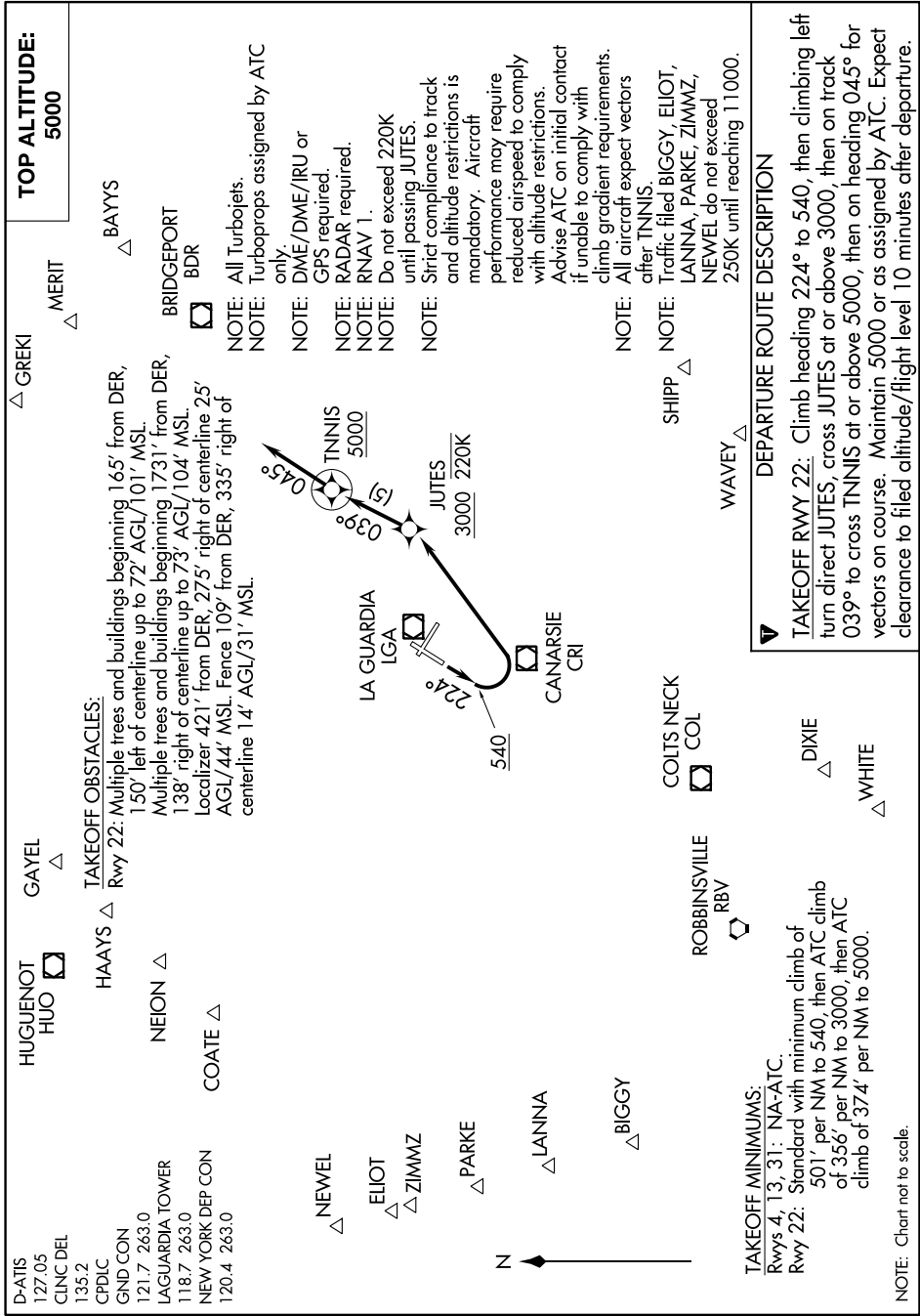


JUTES THREE DEPARTURE (RNAV)

NE-2, 28 NOV 2024 to 26 DEC 2024



NE-2, 28 NOV 2024 to 26 DEC 2024

JUTES THREE DEPARTURE (RNAV)

TOP ALTITUDE:
5000

△ GREKI
△ MERIT

△ BAYYS
BRIDGEPORT
BDR

NOTE: All Turbojets.
NOTE: Turboprops assigned by ATC only.
NOTE: DME/DME/IRU or GPS required.
NOTE: RADAR required.
NOTE: RNAV 1.
NOTE: Do not exceed 220K until passing JUTES.
NOTE: Strict compliance to track and altitude restrictions is mandatory. Aircraft performance may require reduced airspeed to comply with altitude restrictions.
NOTE: Advise ATC on initial contact if unable to comply with climb, gradient requirements.
NOTE: All aircraft expect vectors after TNNIS.

NOTE: Traffic filed BIGGY, ELIOT, LANNA, PARKE, ZIMMZ, NEWEL do not exceed 250K until reaching 11000.

DEPARTURE ROUTE DESCRIPTION

TAKEOFF RWY 22: Climb heading 224° to 540, then climbing left turn direct JUTES, cross JUTES at or above 5000, then on track 039° to cross TNNIS at or above 5000, then on heading 045° for vectors on course. Maintain 5000 or as assigned by ATC. Expect clearance to filed altitude/flight level 10 minutes after departure.

HUGUENOT
HUO

TAKEOFF OBSTACLES:

Rwy 22: Multiple trees and buildings beginning 165' from DER, 150' left of centerline up to 72' AGL/101' MSL.
Multiple trees and buildings beginning 1731' from DER, 138' right of centerline up to 73' AGL/104' MSL.
Localizer 421' from DER, 275' right of centerline 25' AGL/44' MSL. Fence 109' from DER, 335' right of centerline 14' AGL/31' MSL.

△ NEWEL
△ ELIOT
△ ZIMMZ
△ PARKE
△ LANNA
△ BIGGY

COLTS NECK
COL
ROBBINSVILLE
RBV

△ DIXIE
△ WHITE

TAKEOFF MINIMUMS:

Rwys 4, 13, 31: NA-ATC.
Rwy 22: Standard with minimum climb of 501' per NM to 540, then ATC climb of 356' per NM to 3000, then ATC climb of 374' per NM to 5000.

NOTE: Chart not to scale.