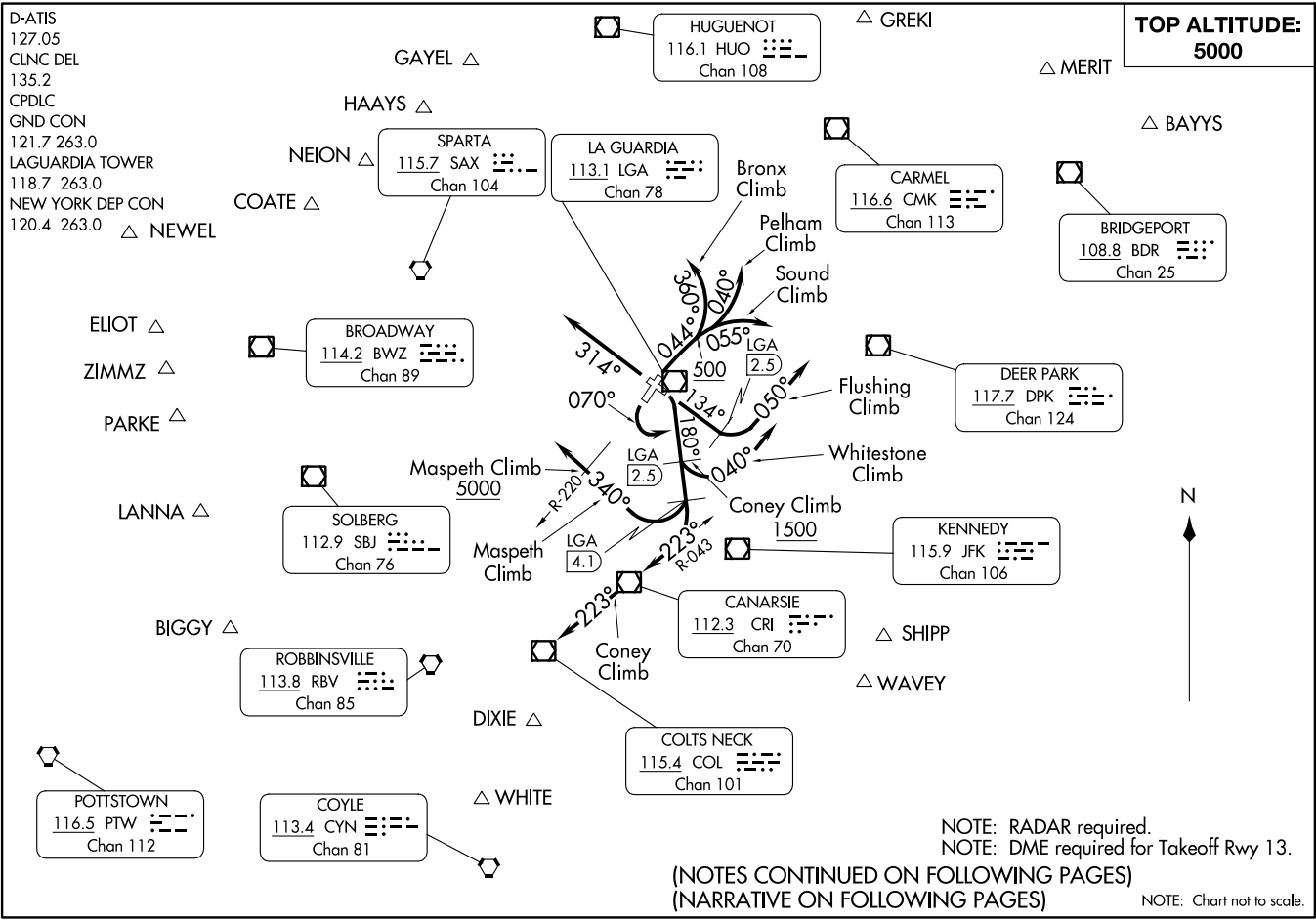


LAGUARDIA SEVEN DEPARTURE
(IGAW7.LGA) 31DEC20

LAGUARDIA SEVEN DEPARTURE
(IGAW7.LGA) 23334

A1-289 (FAA)

LAGUARDIA (LGA)
NEW YORK, NEW YORK



TOP ALTITUDE:
5000

D-ATIS
127.05
CLNC DEL
135.2
CPDLC
GND CON
121.7 263.0
LAGUARDIA TOWER
118.7 263.0
NEW YORK DEP CON
120.4 263.0 △ NEWEL

ELIOT △
ZIMMZ △
PARKE △

LANNA △

BIGGY △

POTSTOWN
116.5 PTW
Chan 112

NEION △
COATE △
SPARTA
115.7 SAX
Chan 104

BROADWAY
114.2 BWZ
Chan 89

SOLBERG
112.9 SBJ
Chan 76

ROBBINSVILLE
113.8 RBV
Chan 85

COYLE
113.4 CYN
Chan 81

GAYEL △

HAAYS △

LA GUARDIA
113.1 LGA
Chan 78

Maspeth Climb
5000

Maspeth Climb
LGA
4.1

DIXIE △

WHITE △

HUGUENOT
116.1 HUO
Chan 108

Bronx Climb

LGA
2.5

LGA
4.1

CANARSIE
112.3 CRI
Chan 70

COLTS NECK
115.4 COL
Chan 101

△ GREKI

△ MERIT

CARMEL
116.6 CMK
Chan 113

Flushing Climb

Whitestone Climb

CONEY CLIMB
1500

△ SHIPP

△ WAVEY

KENNEDY
115.9 JFK
Chan 106

NOTE: RADAR required.
NOTE: DME required for Takeoff Rwy 13.

(NOTES CONTINUED ON FOLLOWING PAGES)
(NARRATIVE ON FOLLOWING PAGES)

NOTE: Chart not to scale.

LAGUARDIA SEVEN DEPARTURE



DEPARTURE ROUTE DESCRIPTION

TAKEOFF RUNWAY 4 (Bronx Climb): Climb on heading 044° to 500 then climbing left turn to heading 360°, maintain 5000, Thence....

TAKEOFF RUNWAY 4 (Pelham Climb): Climb on heading 044° to 500 then climbing left turn to heading 040°, maintain 5000, Thence....

TAKEOFF RUNWAY 4 (Sound Climb): Climb on heading 044° to 500 then climbing right turn to heading 055°, maintain 5000, Thence....

TAKEOFF RUNWAY 13 (Coney Climb): TURBOJETS ONLY - Requires minimum ATC climb of 900' per NM to 1500, if unable, advise ATC prior to taxiing onto the departure runway: Climbing right turn to heading 180° to intercept CRI R-043 (do not exceed 230K until intercepting CRI R-043) to CRI VOR/DME, then on CRI R-223. Cross LGA 2.5 DME at or above 1500, maintain 5000, Thence....

TAKEOFF RUNWAY 13 (Flushing Climb): Climb heading 134° to LGA 2.5 DME, then climbing left turn to heading 050°, maintain 5000, Thence....

TAKEOFF RUNWAY 13 (Maspeth Climb): TURBOJETS ONLY - Requires minimum ATC climb of 900' per NM to 4400, if unable advise ATC prior to taxiing onto the departure runway: Climbing right turn to heading 180°, at LGA 4.1 DME turn right heading 340°, maintain 5000, cross LGA R-220 at or above 5000, Thence....

TAKEOFF RUNWAY 13 (Whitestone Climb): Requires minimum ATC climb of 500' per NM to 1500, if unable advise ATC prior to taxiing onto the departure runway: Climbing right turn to heading 180° to LGA 2.5 DME, then left turn heading 040° (do not exceed 210K until established on heading 040°). Maintain 5000, Thence....

TAKEOFF RUNWAY 22: Climbing left turn to heading 070°, maintain 5000, Thence....

TAKEOFF RUNWAY 31: Climb on heading 314° (or as assigned by ATC), maintain 5000, Thence....

....expect vectors to assigned route/fix. Expect clearance to filed altitude/flight level within ten (10) minutes after departure.

TAKEOFF MINIMUMS:

Rwy 4: Standard.

Rwy 13 (Coney Climb): 400-2 ¼ or standard with minimum climb of 283' per NM to 300. ATC climb of 900' per NM to 1500.

Rwy 13 (Maspeth Climb): Standard with minimum climb of 323' per NM to 2100. ATC climb of 900' per NM to 4400.

Rwy 13 (Flushing Climb): 400-2 ¼ or standard with minimum climb of 283' per NM to 300. ATC climb of 283' per NM to 500.

Rwy 13 (Whitestone Climb): 400-2 ¼ or standard with minimum climb of 283' per NM to 300. ATC climb of 500' per NM to 1500.

Rwy 22: 300-2 ¼ or standard with minimum climb of 210' per NM to 400, or alternatively, with standard takeoff minimums and a normal 200' per NM climb gradient, takeoff must occur no later than 1100' prior to DER.

Rwy 31: 300-1 ½ or standard with minimum climb of 334' per NM to 500.

(CONTINUED ON FOLLOWING PAGE)

LAGUARDIA SEVEN DEPARTURE

NE-2, 28 NOV 2024 to 26 DEC 2024

NE-2, 28 NOV 2024 to 26 DEC 2024

LAGUARDIA SEVEN DEPARTURE



(NOTES CONTINUED)

- NOTE: Rwy 31 Departures: Expect turn on course leaving 6000.
- NOTE: Traffic filed over BIGGY, LANNA, ELIOT, PARKE, ZIMMZ, NEWEL: Do not exceed 250K until reaching 11000.
- NOTE: BAYYS Departures expect vectors to BDR/BDR R-054.
- NOTE: COATE Departures expect vectors to SAX/SAX R-311.
- NOTE: SHIPP Departures expect vectors to JFK/JFK R-139.
- NOTE: WAVEY Departures expect vectors to JFK/JFK R-156.
- NOTE: WHITE Departures expect vectors to COL/COL R-204.
- NOTE: BIGGY Departures expect vectors to SBJ/SBJ R-237.
- NOTE: DIXIE Departures expect vectors to COL/COL R-192.
- NOTE: ELIOT Departures expect vectors to SAX R-252. ELIOT authorized for all aircraft types but restricted to a final altitude of 14000 or 16000.
- NOTE: ZIMMZ Departures expect vectors to SAX R-250. ZIMMZ authorized for all aircraft types but restricted to a final altitude of FL180 and above.
- NOTE: NEWEL Departures expect vectors to SAX R-264. NEWEL authorized only for jet aircraft requesting a final altitude of FL180 and above.
- NOTE: GAYEL Departures expect vectors to DPK R-320.
- NOTE: LANNA Departures expect vectors to PTW R-059.
- NOTE: MERIT Departures expect vectors to LGA R-055.
- NOTE: NEION Departures expect vectors to LGA R-322.
- NOTE: PARKE Departures expect vectors to BWZ/BWZ R-250.
- NOTE: HAAYS Departures expect vectors to HUO.

NE-2, 28 NOV 2024 to 26 DEC 2024

NE-2, 28 NOV 2024 to 26 DEC 2024