

NTHNS FIVE DEPARTURE (RNAV)

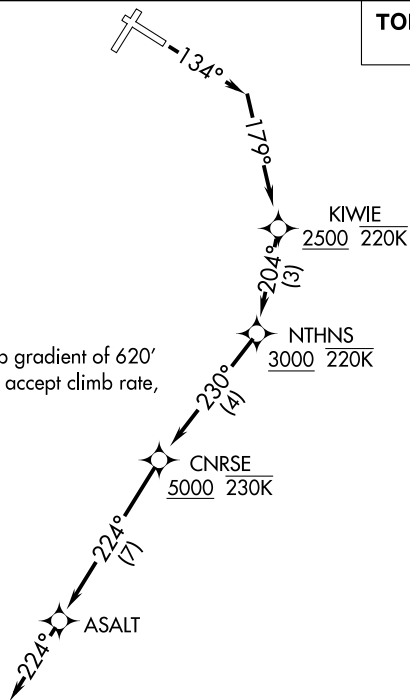
D-ATIS
127.05
CLNC DEL
135.2
CPDLC
GND CON
121.7 263.0
LAGUARDIA TOWER
118.7 263.0
NEW YORK DEP CON
120.4 263.0

**TOP ALTITUDE:
5000**

TAKEOFF MINIMUMS

Rwys 4, 22, 31: NA-ATC.

Rwy 13: Standard with minimum climb gradient of 620' per NM to 2500. If unable to accept climb rate, advise ATC on initial contact.



COLTS NECK
COL

ROBBINSVILLE
RBV

DIXIE

WHITE

SHIPP

WAVEY

- NOTE: For turbojet aircraft only.
- NOTE: RADAR required.
- NOTE: DME/DME/IRU or GPS required.
- NOTE: RNAV 1.
- NOTE: Strict compliance to track and altitude restrictions is mandatory. Aircraft performance may require reduced airspeed to comply with altitude restrictions. Advise ATC on initial contact if unable to comply with climb gradient requirements.
- NOTE: Aircraft filed RBV, WHITE, SHIPP, WAVEY, DIXIE: Expect RADAR vectors after ASALT.

NOTE: Chart not to scale.



DEPARTURE ROUTE DESCRIPTION

TAKEOFF RUNWAY 13: Climb on heading 134° to intercept course 179° to cross KIWIE at or above 2500 and at or below 220K, then on track 204° to cross NTHNS at or above 3000 and at or below 220K, then on track 230° to CNRSE at or above 5000 and at or below 230K, then on depicted route to ASALT, then on track 224° for RADAR vector on course. Maintain 5000 or as assigned by ATC. Expect clearance to filed altitude/flight level 10 minutes after departure.

NTHNS FIVE DEPARTURE (RNAV)