

Rwy	Knots	60	120	180	240	300	360
#10 (a)	V/V(fpm)	400	800	1200	1600	2000	2400
*#28 (b)	V/V(fpm)	240	480	720	960	1200	1440

* Minimum † ATC Climb Rate

- (a) to 500
- (b) to 600

ATIS
 118.425 338.225
 CLNC DEL
 120.7 339.8
 GND CON
 121.8 370.85
 CHAMBERS TOWER
 124.3 379.15
 NORFOLK DEP CON
 125.2 363.125
 WASHINGTON CENTER
 123.85 323.0

HARCUM
 108.8 HCM
 Chan 25

FLAT ROCK
 113.3 FAK
 Chan 80

SALISBURY
 111.2 SBY
 Chan 49

CAPE CHARLES
 112.2 CCV
 Chan 59

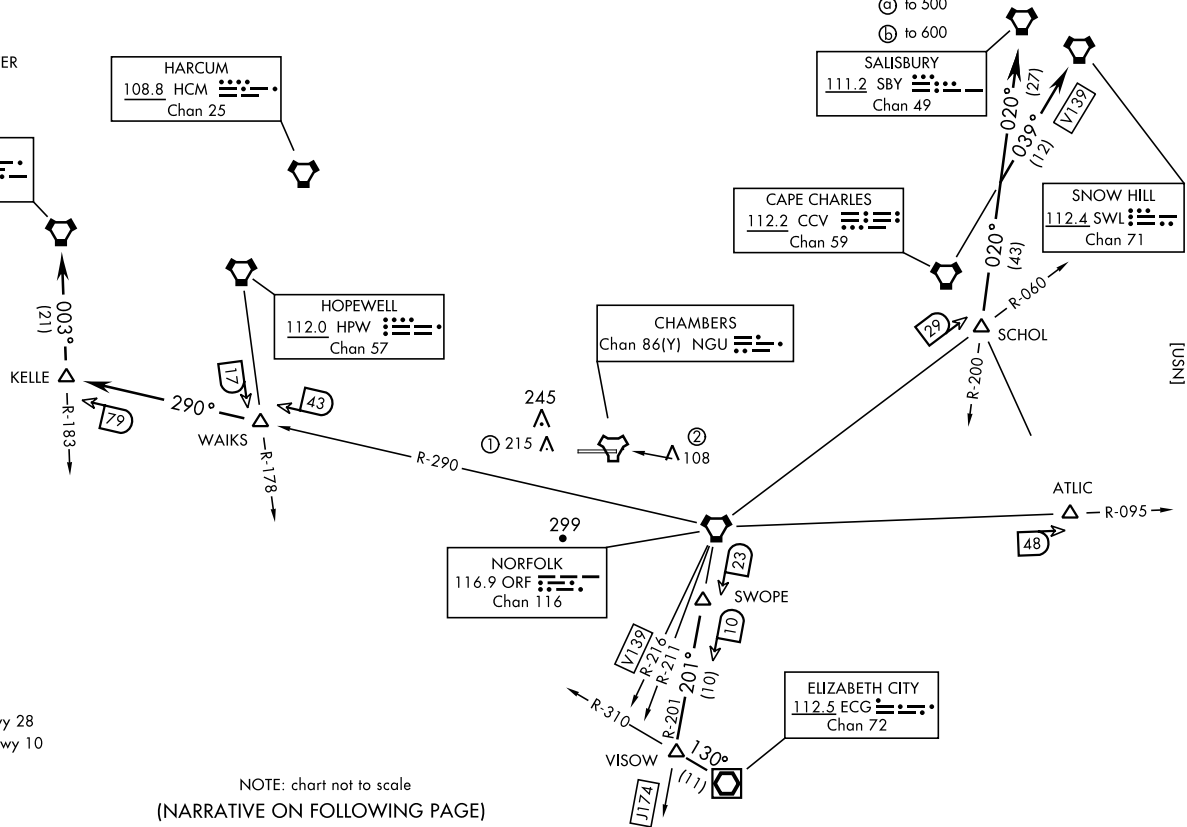
SNOW HILL
 112.4 SWL
 Chan 71

HOPEWELL
 112.0 HPW
 Chan 57

CHAMBERS
 Chan 86(Y) NGU

NORFOLK
 116.9 ORF
 Chan 116

ELIZABETH CITY
 112.5 ECG
 Chan 72



- ① 1.3 NM from Rwy 28
- ② 0.26 NM from Rwy 10

NOTE: chart not to scale
 (NARRATIVE ON FOLLOWING PAGE)

[USN]

▼ DEPARTURE ROUTE DESCRIPTION

TAKEOFF RWY 10: Climbing left turn heading 050°. Thence...

TAKEOFF RWY 28: Climb heading 280°. Thence...

... via RADAR vectors to assigned transition. Maintain 2000 or assigned altitude. Expect clearance to requested altitude/flight level 10 minutes after departure.

ATLIC TRANSITION (NGU2.ATLC): Via vectors to ATLIC.

CAPE CHARLES TRANSITION (NGU2.CCV): Via vectors to CCV VORTAC. (NOTE: For altitudes 5000 and below).

ELIZABETH CITY TRANSITION (NGU2.ECG): Via vectors to SWOPE, then via ORF VORTAC R-201 to VISOW (ORF R-201 / 33 DME), then direct ECG VOR/DME.

FIAT ROCK TRANSITION (NGU2.FAK): Via vectors to WAKS, then via ORF VORTAC R-290 to KELLE, then direct FAK VORTAC.

HARCUM TRANSITION (NGU2.HCM): Via vectors to HCM VORTAC.

HOPEWELL TRANSITION (NGU2.HPW): Via vectors to HPW VORTAC.

J174 TRANSITION (NGU2.ORF): Via vectors to J174.

SALSBURY TRANSITION (NGU2.SBY): Via vectors to SCHOL, then SBY R-200 to SBY VORTAC.

SNOW HILL TRANSITION (NGU2.SWL): Via vectors to SCHOL, thence SBY R-200 to V139 to SWL VORTAC.

V139 TRANSITION (NGU2.ORF): Via vectors to V139.

NOTE: Transitions are part of the Preferred Departure Route (PDR) system and established as an Air Traffic flow procedure from the Norfolk Terminal Area. These fixes are to be used as the initial filing point out of NS Norfolk.