

# HI-TACAN Y RWY 10

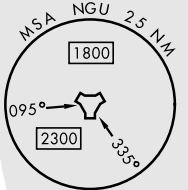
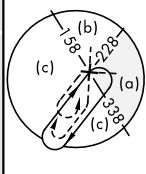
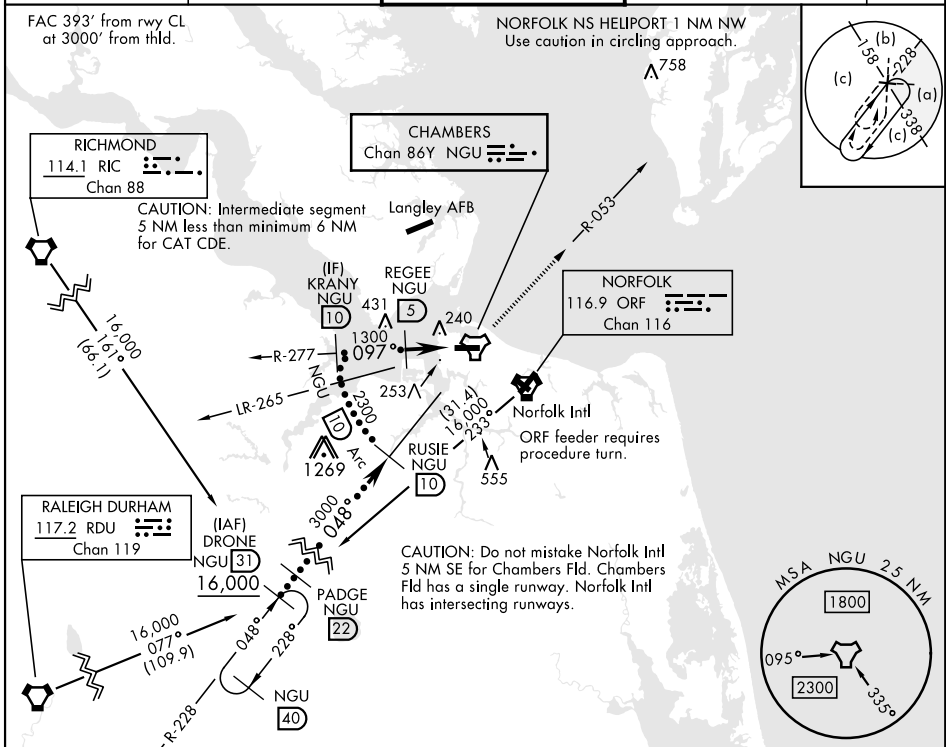
TACAN NGU Chan <b>86Y</b>	APCH CRS <b>097°</b>	Rwy ldg <b>8071</b> TDZE <b>14</b> Arprt Elev <b>15</b>
------------------------------	-------------------------	---

[USN]

NORFOLK NS (CHAMBERS FLD) (KNGU)

RADAR required * When ALS inop, increase CAT CDE vis to 1½ miles. ** Circling not authorized S of Rwy 10-28.	ALSF-2	MISSED APPROACH: Climbing left turn to 2300 on NGU TACAN R-053 then as directed by ATC.
--	--------	---

ATIS <b>118.425 338.225</b>	APP CON <b>118.9 273.475</b>	CHAMBERS TOWER <b>124.3 379.15</b>	GND CON <b>121.8 370.85</b>	ASR/PAR
--------------------------------	---------------------------------	---------------------------------------	--------------------------------	---------



ELEV	15	TDZE	14
Rwy 10 ldg 8071' Rwy 28 ldg 7375'			
CATEGORY	C	D	E
S-10*	520-1	506	(600-1)
CIRCLING**	540-1½ 525 (600-1½)	580-2	565 (600-2)
HIRL Rwy 10-28 REIL Rwy 10-28 TDZL/CL Rwy 10-28			

# HI-TACAN Y RWY 10

NE-3, 28 NOV 2024 TO 26 DEC 2024

NE-3, 28 NOV 2024 TO 26 DEC 2024