

HI-TACAN Y RWY 28

TACAN NGU Chan 86Y	APCH CRS 290°	Rwy ldg TDZE Arprt Elev	7375 14 15
------------------------------	-------------------------	-------------------------------	---------------------------------------

[USN]

NORFOLK NS (CHAMBERS FLD) (KNGU)

RADAR required * When ALS inop, increase CAT CDE vis to 1 3/8 miles. ** Circling not authorized S of Rwy 10-28.	SSALF 	MISSED APPROACH: Climb to 2300 on NGU TACAN R-277 then as directed by ATC.
-----------------------------------------------------------------------------------------------------------------------	-----------	-------------------------------------------------------------------------------

ATIS 118.425 338.225	APP CON 118.9 273.475	CHAMBERS TOWER 124.3 379.15	GND CON 121.8 370.85	ASR/PAR
--------------------------------	---------------------------------	---------------------------------------	--------------------------------	---------

CAUTION:
Do not mistake Norfolk Intl 5 NM SE for Chambers Fld. Chambers Fld has a single rwy, Norfolk Intl has int runways.

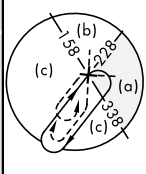
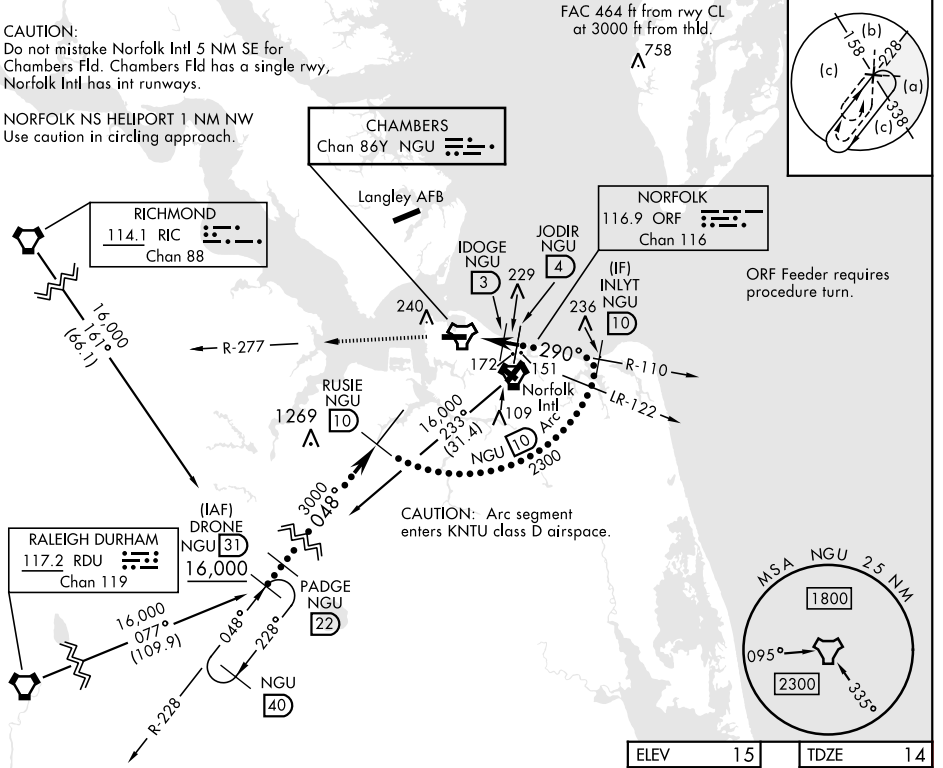
NORFOLK NS HELIPORT 1 NM NW
Use caution in circling approach.

CHAMBERS
Chan 86Y NGU

NORFOLK
116.9 ORF
Chan 116

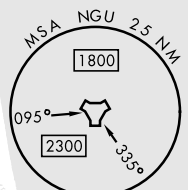
RICHMOND
114.1 RIC
Chan 88

RALEIGH DURHAM
117.2 RDU
Chan 119



ORF Feeder requires procedure turn.

CAUTION: Arc segment enters KNTU class D airspace.



EMERG SAFE ALT 100 NM 4100

2300	NGU R-277	NGU TACAN	KLUMM NGU 0.5	NGU 1.3	IDOGE NGU 3	JODIR NGU 4	INLYT NGU 10	RUSIE NGU 10	PADGE NGU 22	DRONE NGU 31	16,000
					2.93° TCH 36		290°		048°		
			980	1300	2300	3000	11,000				
		0.5 NM	2.5 NM	1 NM							
CATEGORY		C		D		E					
S-28 *		460-1		446		(500-1)					
CIRCLING **		540-1 1/2 525 (600-1 1/2)		580-2		565 (600-2)					

ELEV	15	TDZE	14
------	----	------	----

Rwy 10 ldg 8071'
Rwy 28 ldg 7375'

NORFOLK NS Heliport

HIRL Rwy 10-28
REIL Rwy 10-28
TDZL/CL Rwy 10-28

HI-TACAN Y RWY 28

NE-3, 28 NOV 2024 to 26 DEC 2024

NE-3, 28 NOV 2024 to 26 DEC 2024