

APP CRS <b>317°</b>	Rwy Idg TDZE Apt Elev	<b>3901</b> <b>25</b> <b>26</b>
------------------------	-----------------------------	---------------------------------------

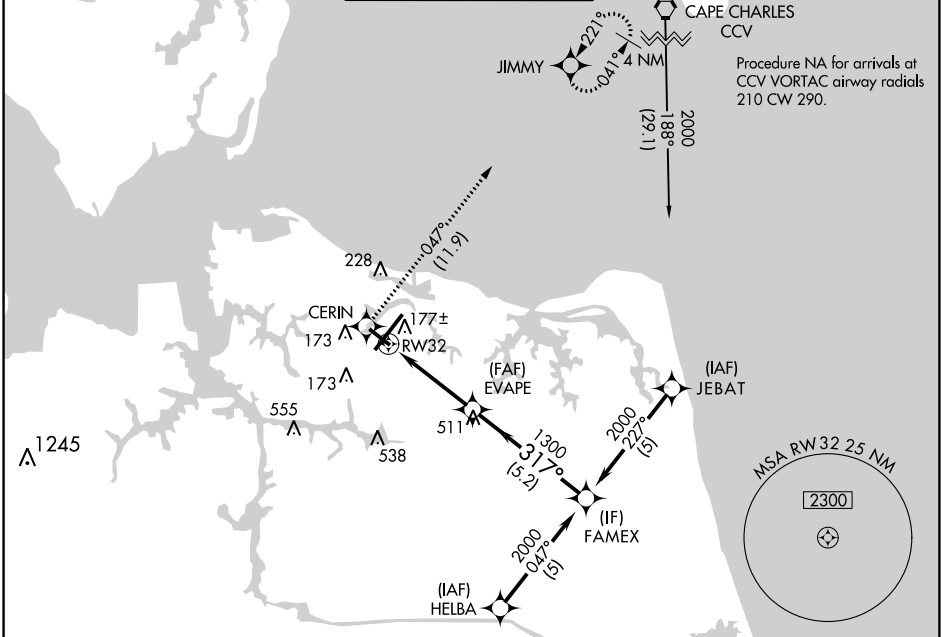
# RNAV (GPS) RWY 32

NORFOLK INTL (ORF)

**▽** DME/DME RNP-0.3 NA. Helicopter visibility reduction below 3/4 SM NA.

**▲** MISSED APPROACH: Climb to 2000 direct CERIN and on track 047° to JIMMY and hold.

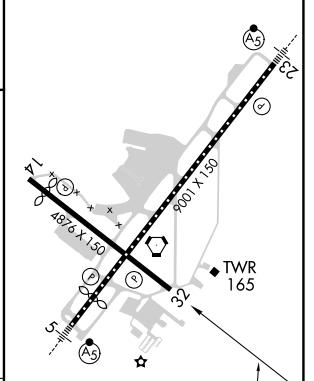
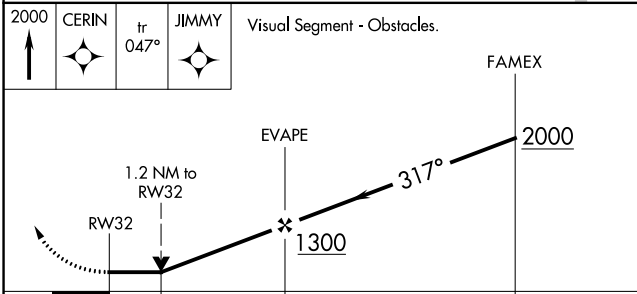
ATIS <b>127.15</b>	NORFOLK APP CON <b>118.9 353.7</b>	NORFOLK TOWER <b>120.8 257.8</b>	GND CON <b>121.9</b>	CLNC DEL <b>118.5</b>
-----------------------	---------------------------------------	-------------------------------------	-------------------------	--------------------------



Procedure NA for arrivals at SUNNS on V139 southwest bound.

SUNNS  $\swarrow$  2000 056° (23-7)

ELEV 26	<b>D</b> TDZE 25
---------	------------------



CATEGORY	A	B	C	D
LNVA MDA	440-1	415 (500-1)	440-1½	415 (500-1½)
<b>C</b> CIRCLING	480-1 454 (500-1)	540-1 514 (600-1)	540-1½ 514 (600-1½)	900-2¾ 874 (900-2¾)

REIL Rwy 14 and 32  
HIRL Rwy 5-23  
MIRL Rwy 14-32

NE-3, 28 NOV 2024 to 26 DEC 2024

NE-3, 28 NOV 2024 to 26 DEC 2024