

# RIVER VISUAL RWY 5

AL-291 (FAA)

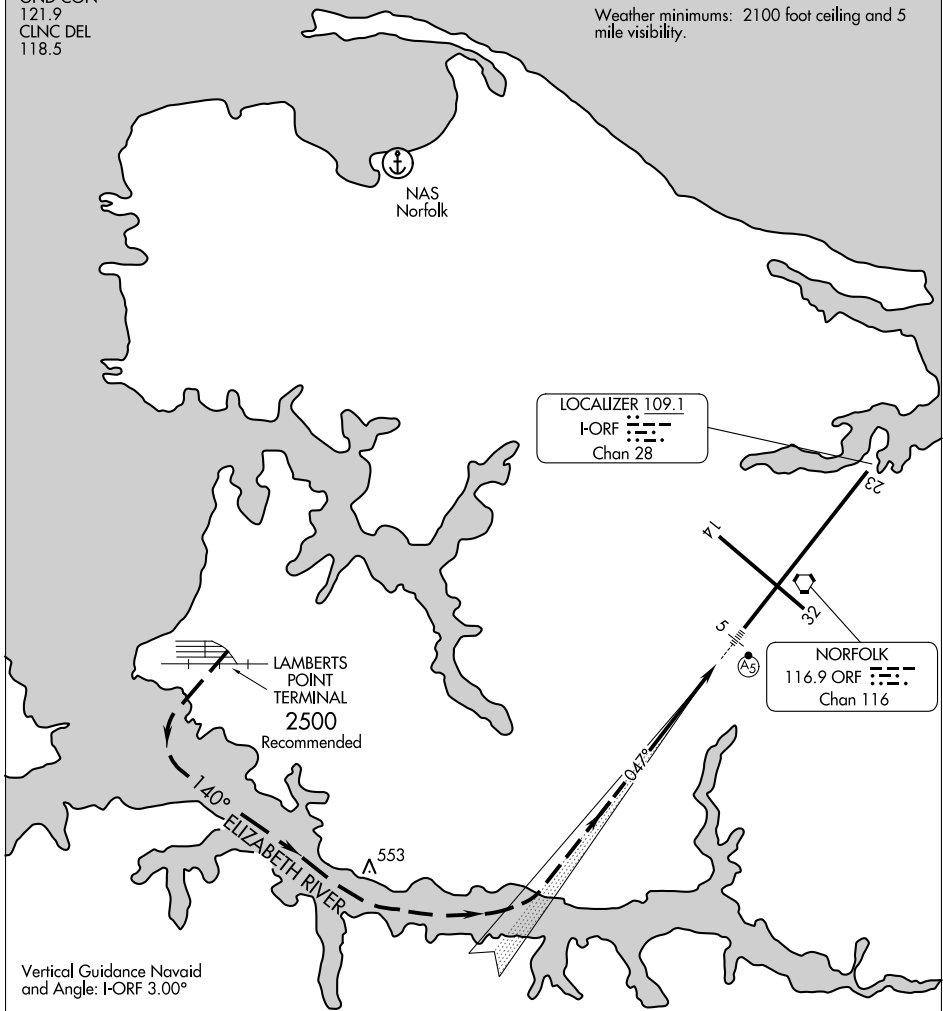
NORFOLK INTL (ORF)  
NORFOLK, VIRGINIA

ATIS 127.15  
NORFOLK APP CON  
118.9 353.7  
NORFOLK TOWER  
120.8 257.8  
GND CON  
121.9  
CLNC DEL  
118.5

Procedure not authorized at night.

## RADAR REQUIRED

Weather minimums: 2100 foot ceiling and 5 mile visibility.



NE-3, 28 NOV 2024 to 26 DEC 2024

NE-3, 28 NOV 2024 to 26 DEC 2024

Vertical Guidance Navaid  
and Angle: I-ORF 3.00°

1 NM	2	3	4	5	6
------	---	---	---	---	---



### RIVER VISUAL RWY 5

RADAR vectors will be provided to the Lambert's Point Terminal. Proceed visually along the Elizabeth River to the extended centerline of Rwy 5. The I-ORF and MALS are available for supplemental guidance.

# RIVER VISUAL RWY 5

Orig-A 30NOV23

36°54'N-76°12'W

NORFOLK, VIRGINIA  
NORFOLK INTL (ORF)