

APP CRS	Rwy Idg	<b>8995</b>
<b>227°</b>	TDZE	<b>26</b>
	Apt Elev	<b>27</b>

# RNAV (RNP) Y RWY 23

NORFOLK INTL (ORF)

**▼** For uncompensated Baro-VNAV systems, procedure NA below -9°C (16°F) or above 54°C (130°F). GPS required. For inop ALS, increase RNP 0.10 DA visibility all Cats to 1½ SM, increase RNP 0.30 DA visibility all Cats to 1¾ SM.

**MALS**  
  
**MISSED APPROACH:** Climb to 2000 on track 227° to CALEY and hold.

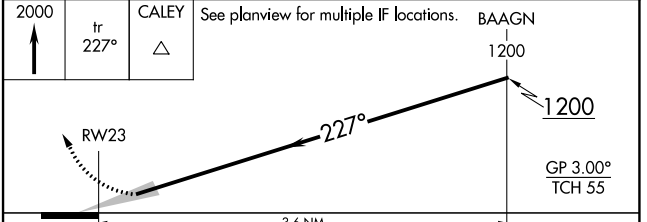
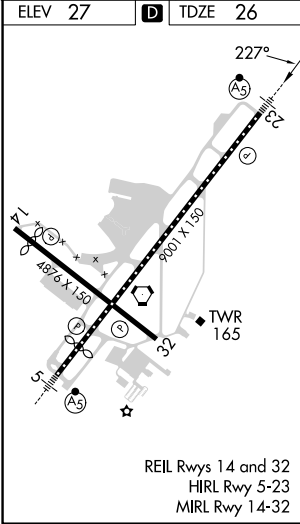
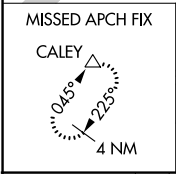
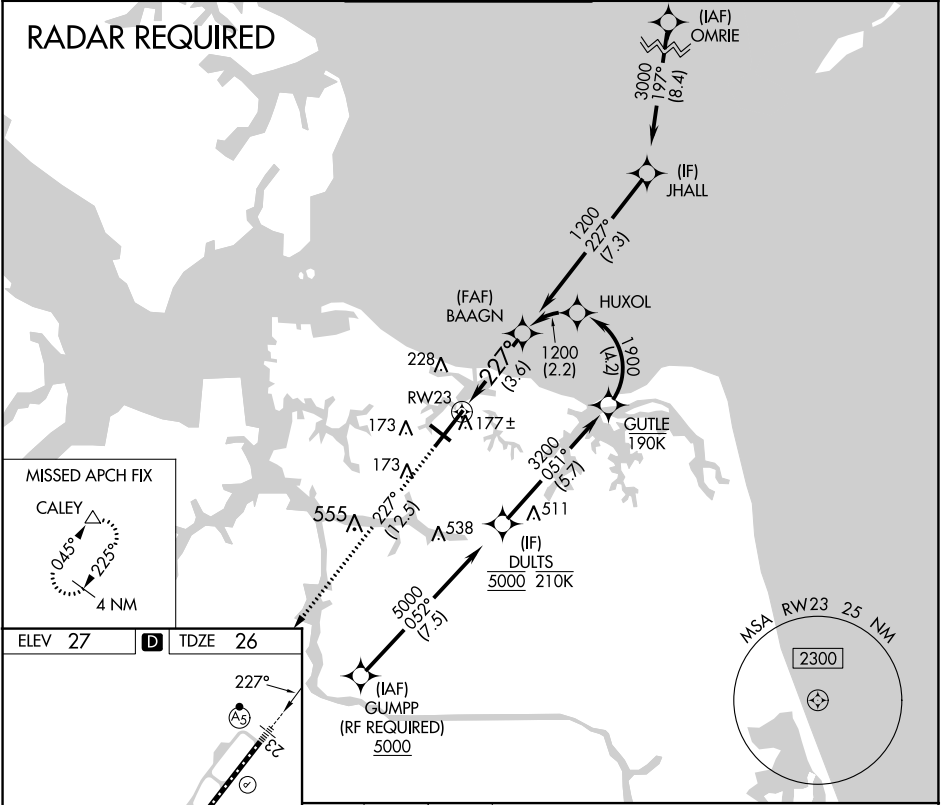
**ATIS**  
**127.15**

**NORFOLK APP CON**  
**118.9 353.7**

**NORFOLK TOWER**  
**120.8 257.8**

**GND CON**  
**121.9**

**CLNC DEL**  
**118.5**



CATEGORY	A	B	C	D
RNP 0.10 DA		432-¾	406 (500-¾)	
RNP 0.30 DA		491-1	465 (500-1)	

## AUTHORIZATION REQUIRED

NE-3, 28 NOV 2024 to 26 DEC 2024

NE-3, 28 NOV 2024 to 26 DEC 2024