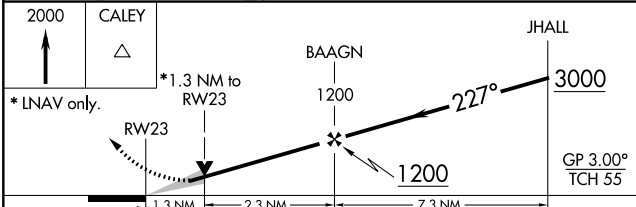
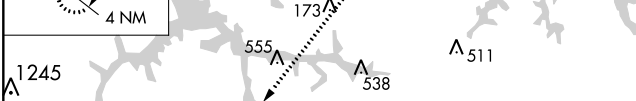
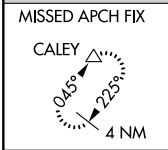
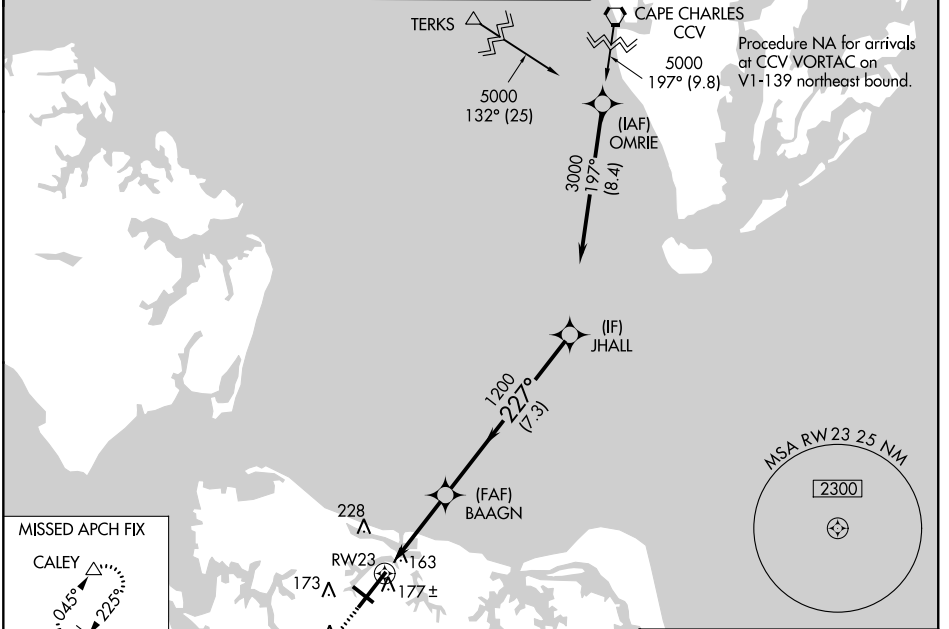


WAAS CH 56322 W23A	APP CRS 227°	Rwy Idg TDZE Apt Elev	8995 26 27
--	------------------------	-----------------------------	---------------------------------------

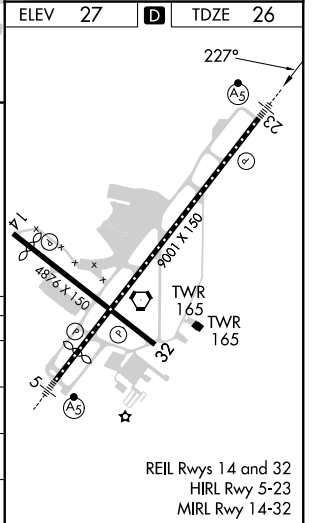
RNAV (GPS) Z RWY 23

NORFOLK INTL (ORF)

<p>For uncompensated Baro-VNAV systems, LNAV/VNAV NA below -9°C (16°F) or above 54°C (130°F). DME/DME RNP-0.3 NA.</p>	<p>MALSR</p>		<p>MISSED APPROACH: Climb to 2000 direct CALEY and hold.</p>	
	<p>ATIS 127.15</p>	<p>NORFOLK APP CON 118.9 353.7</p>	<p>NORFOLK TOWER 120.8 257.8</p>	<p>GND CON 121.9</p>



CATEGORY	A	B	C	D
LPV DA		226-½	200 (200-½)	
LNAV/VNAV DA		403-¾	377 (400-¾)	
LNAV MDA	480-½	454 (500-½)	480-⅞	454 (500-⅞)
CIRCLING	480-1 453 (500-1)	540-1 513 (600-1)	540-1½ 513 (600-1½)	900-2¾ 873 (900-2¾)



NE-3, 28 NOV 2024 to 26 DEC 2024

NE-3, 28 NOV 2024 to 26 DEC 2024