

BANND TWO ARRIVAL (RNAV) Transition Routes
SAIN FRANCISCO BAY OAKLAND INTL (OAK)
OAKLAND, CALIFORNIA
BANND TWO ARRIVAL (RNAV) Transition Routes
SAN FRANCISCO BAY OAKLAND INTL (OAK)
OAKLAND, CALIFORNIA
BANND TWO ARRIVAL (RNAV) Transition Routes
SAN FRANCISCO BAY OAKLAND INTL (OAK)
OAKLAND, CALIFORNIA

OAKLAND CENTER
134.37 281.5
NORCAL APP CON
124.8 263.15
D-ATIS
133.775
OAKLAND TOWER
127.2 256.9 (Rwy 12)
GND CON
121.75 (Rwy 12)

MRLET TRANSITION (MRLET.BANND2)
RPARK TRANSITION (RPARK.BANND2)
RUSME TRANSITION (RUSME.BANND2)

(BANND.BANND2) 24229
AL-294 (FAA) SAN FRANCISCO BAY OAKLAND INTL (OAK)
OAKLAND, CALIFORNIA
BANND TWO ARRIVAL (RNAV) Transition Routes
SAN FRANCISCO BAY OAKLAND INTL (OAK)
OAKLAND, CALIFORNIA



NOTE: RADAR required.
NOTE: RNAV 1.
NOTE: DME/DME/IRU or GPS required.



7000
*1500
244°
(10)

BANND
FL180 270K

See following page
for Arrival Routes.

GRUDG
FL200

11000
*5300
244°
(25)

OAKES
FL320 280K
FL240

16000
*9400
195°
(28)

16000
*11400
245°
(31)

MOLLA

FL200
246°
(47)

RPARK

FL200
179°
(52)

MRLET

POYSN

FL200
267°
(137)

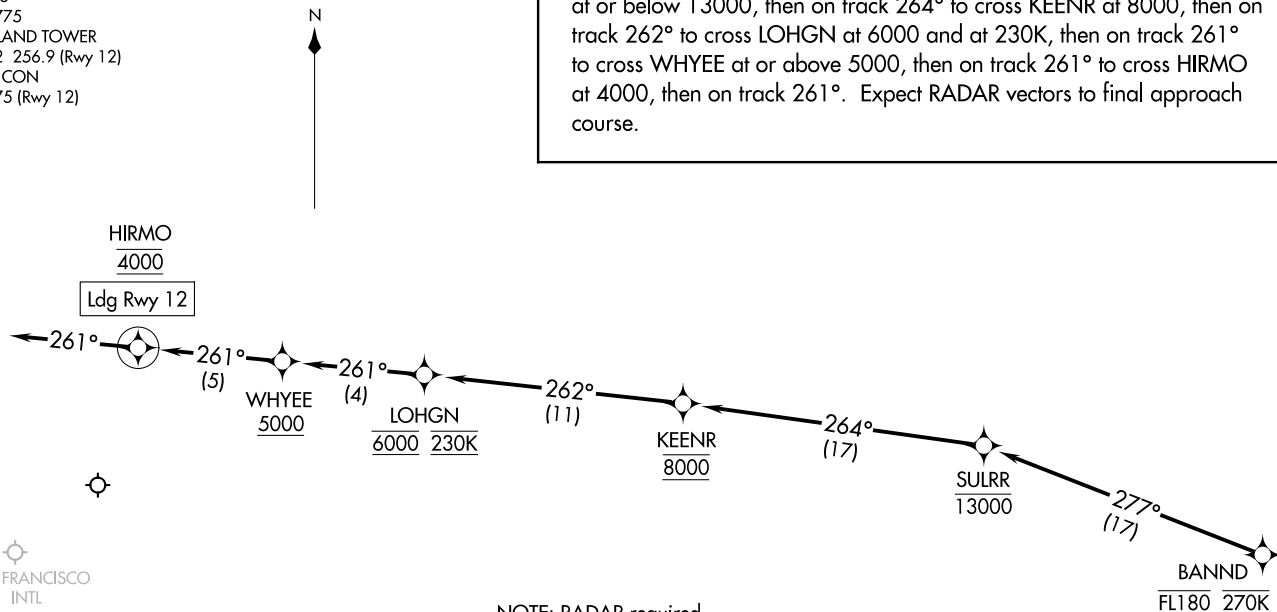
RUSME

(CONTINUED ON FOLLOWING PAGE)

NOTE: Chart not to scale.

ARRIVAL ROUTE DESCRIPTION

LANDING RUNWAY 12: From BANND on track 277° to cross SULRR at or below 13000, then on track 264° to cross KEENR at 8000, then on track 262° to cross LOHGN at 6000 and at 230K, then on track 261° to cross WHYEE at or above 5000, then on track 261° to cross HIRMO at 4000, then on track 261°. Expect RADAR vectors to final approach course.



NOTE: RADAR required.
NOTE: RNAV 1.
NOTE: DME/DME/IRU or GPS required.

OAKLAND CENTER
134.37 281.5
NORCAL APP CON
124.8 263.15
D-ATIS
133.775
OAKLAND TOWER
127.2 256.9 (Rwy 12)
GND CON
121.75 (Rwy 12)

NOTE: Chart not to scale.