

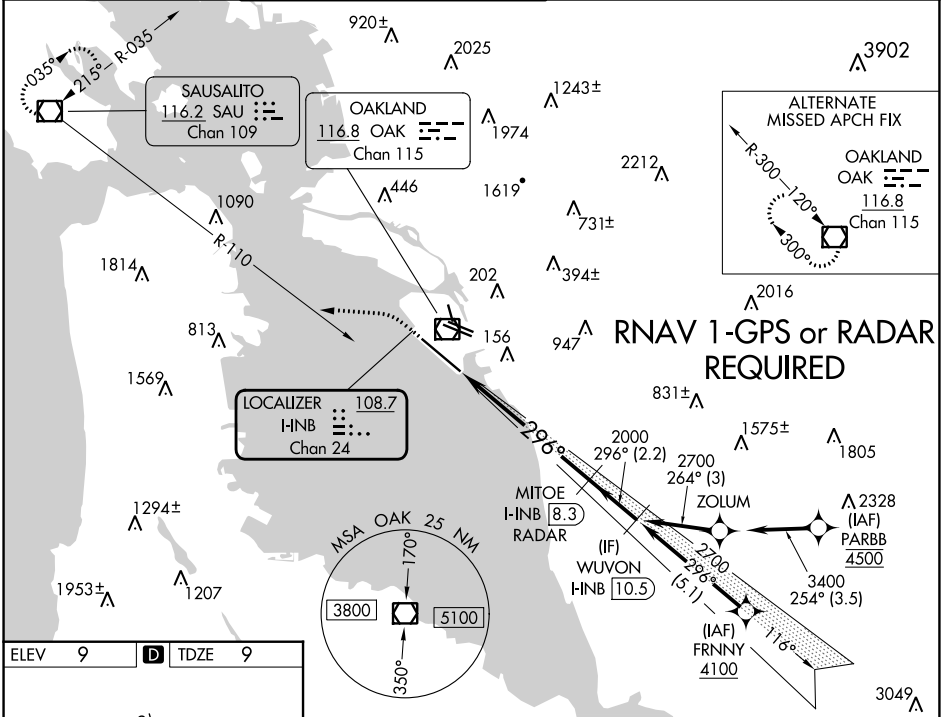
LOC/DME I-INB <b>108.7</b> Chan 24	APP CRS <b>296°</b>	Rwy Idg TDZE Apt Elev <b>10000</b> <b>9</b> <b>9</b>
--	------------------------	---

# ILS or LOC RWY 30

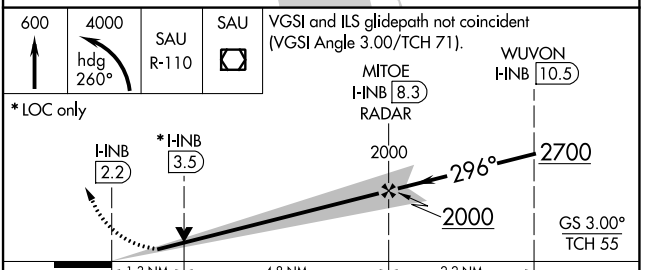
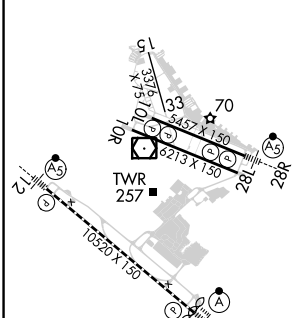
SAN FRANCISCO BAY OAKLAND INTL (OAK)

DME or RADAR required.		ALSF-2 	MISSED APPROACH: Climb to 600 then climbing left turn to 4000 on heading 260° and on SAU VOR/DME R-110 to SAU VOR/DME and hold, continue climb-in-hold to 4000.		
------------------------	--	------------	---	--	--

D-ATIS <b>133.775</b>	NORCAL APP CON <b>125.35 263.15</b>	OAKLAND TOWER <b>118.3 291.65</b> (Rwys 10L/R-28L/R, 15-33) <b>127.2 256.9</b> (Rwy 12-30)	GND CON <b>121.9</b> (Rwys 10L/R-28L/R, 15-33) <b>121.75</b> (Rwy 12-30)	CLNC DEL <b>121.1</b>	CPDLC
--------------------------	--	--	--	--------------------------	-------



ELEV 9	<b>D</b>	TDZE 9
--------	----------	--------



CATEGORY	A	B	C	D
S-ILS 30	209/18 200 (200-½)			
S-LOC 30	500/24	491 (500-½)	500/50	491 (500-1)
<b>C</b> CIRCLING	560-1	551 (600-1)	660-1¾ 651 (700-1¾)	1400-3 1391 (1400-3)

SW-2, 28 NOV 2024 to 26 DEC 2024

SW-2, 28 NOV 2024 to 26 DEC 2024