


(NUEVO8.EUGEN) 24249

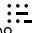
NUEVO EIGHT DEPARTURE

SAN FRANCISCO BAY OAKLAND INTL (OAK)
AL-294 (FAA) OAKLAND, CALIFORNIA

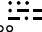
**TOP ALTITUDE:
ASSIGNED BY ATC**

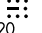
D-ATIS
133.775
CLNC DEL
121.1
CPDLC
GND CON
121.9 (Rwys 28L/R)
121.75 (Rwy 30)
OAKLAND TOWER
118.3 291.65 (Rwys 28L/R)
127.2 256.9 (Rwy 30)
NORCAL DEP CON
135.1 307.2

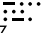
POINT REYES
113.7 PYE 
Chan 84

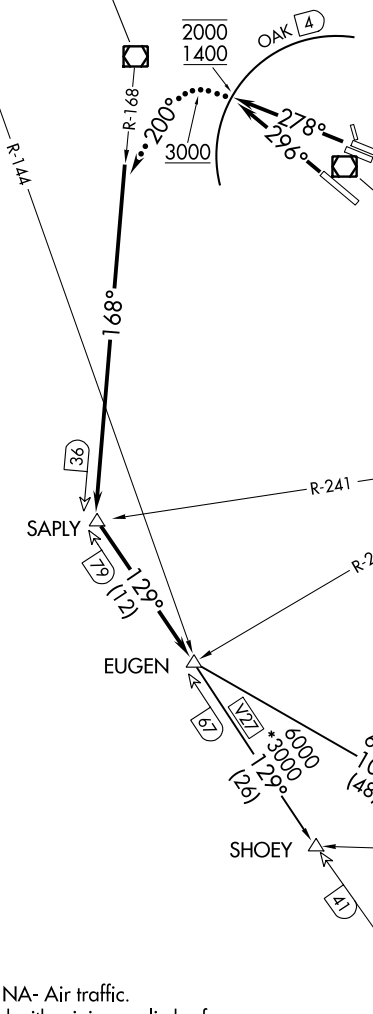
SAUSALITO
116.2 SAU 
Chan 109

OAKLAND
116.8 OAK 
Chan 115

SAN JOSE
114.1 SJC 
Chan 88

SALINAS
117.3 SNS 
Chan 120

BIG SUR
114.0 BSR 
Chan 87



NOTE: RADAR required.
NOTE: DME required.

TAKEOFF MINIMUMS

Rwys 10L, 10R, 12, 15, 33: NA- Air traffic.
Rwys 28L, 28R, 30: Standard with minimum climb of
375' per NM to 2000.

NOTE: Chart not to scale.

(CONTINUED ON FOLLOWING PAGE)

NUEVO EIGHT DEPARTURE

(NUEVO8.EUGEN) 15SEP16

OAKLAND, CALIFORNIA
SAN FRANCISCO BAY OAKLAND INTL (OAK)

SW-2, 28 NOV 2024 to 26 DEC 2024

SW-2, 28 NOV 2024 to 26 DEC 2024



DEPARTURE ROUTE DESCRIPTION

TAKEOFF RUNWAYS 28L/R: Climb heading 278° for RADAR vectors to SAU R-168, cross 4 DME northwest of OAK VOR/DME at or above 1400 and at or below 2000. Thence

TAKEOFF RUNWAY 30: Climb heading 296° for RADAR vectors to SAU R-168, cross 4 DME northwest of OAK VOR/DME at or above 1400 and at or below 2000. Thence

. . . . intercept and proceed on the SAU R-168 to SAPLY INT and on BSR R-309 to EUGEN INT, then via assigned (transition). Expect clearance to filed altitude ten minutes after departure.

LOST COMMUNICATIONS: After reaching 3000, turn left heading 200° to intercept and proceed via SAU R-168, then resume own navigation.

SALINAS TRANSITION (NUEVO8.SNS): From over EUGEN INT on SNS R-286 to SNS VORTAC.

SHOEY TRANSITION (NUEVO8.SHOEY): From over EUGEN INT on BSR R-309 to SHOEY INT.

SW-2, 28 NOV 2024 to 26 DEC 2024

SW-2, 28 NOV 2024 to 26 DEC 2024