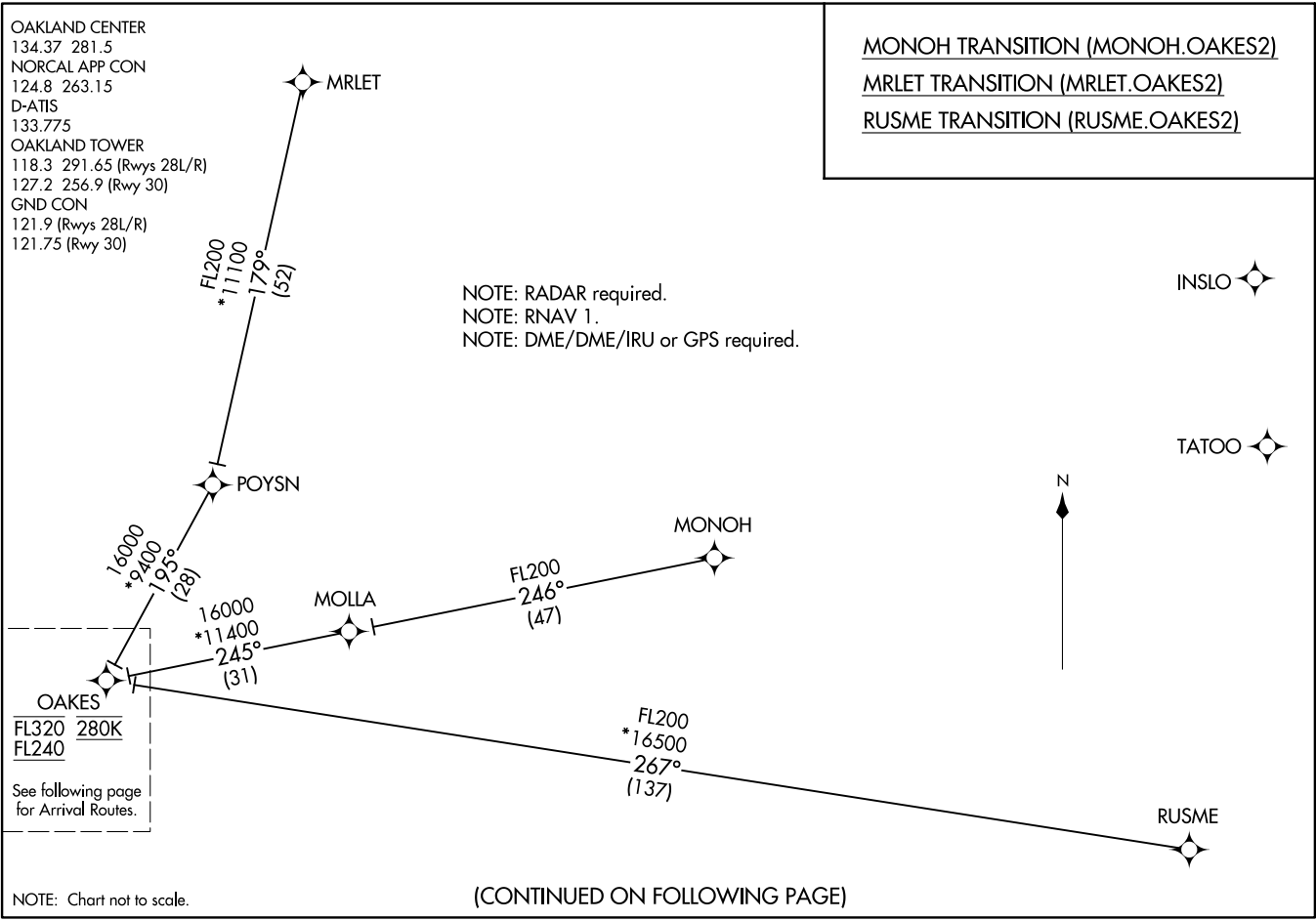


OAKES TWO ARRIVAL (RNAV) Transition Routes
(OAKES, OAKES2) 150CT15



OAKLAND CENTER
134.37 281.5
NORCAL APP CON
124.8 263.15
D-ATIS
133.775
OAKLAND TOWER
118.3 291.65 (Rwys 28L/R)
127.2 256.9 (Rwy 30)
GND CON
121.9 (Rwys 28L/R)
121.75 (Rwy 30)

OAKES
FL320 280K
FL240
See following page
for Arrival Routes.

MONOH TRANSITION (MONOH.OAKES2)
MRLET TRANSITION (MRLET.OAKES2)
RUSME TRANSITION (RUSME.OAKES2)

(OAKES, OAKES2) 24249
AL-294 (FAA)
SAN FRANCISCO BAY OAKLAND INTL (OAK)
OAKLAND, CALIFORNIA
OAKES TWO ARRIVAL (RNAV) Transition Routes

(CONTINUED ON FOLLOWING PAGE)

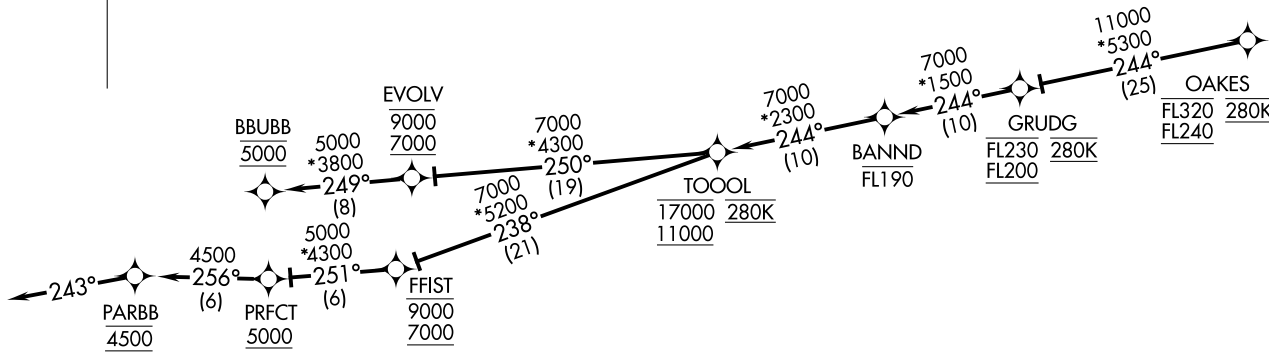
NOTE: Chart not to scale.

ARRIVAL ROUTE DESCRIPTION

From OAKES on track 244° to cross GRUDG between FL200 and FL230 and at 280K, then on track 244° to cross BANND at or below FL190.

LANDING RUNWAYS 28L/R: From BANND on track 244° to cross TOOOOL between 11000 and 17000 and at 280K, then on track 250° to cross EVOLV between 7000 and 9000, then on track 249° to cross BBUBB at 5000. Expect assigned instrument approach procedure.

LANDING RUNWAY 30: From BANND on track 244° to cross TOOOOL between 11000 and 17000 and at 280K, then on track 238° to cross FFIST between 7000 and 9000, then on track 251° to cross PRFCT at or above 5000, then on track 256° to cross PARBB at 4500, then on track 243°. Expect assigned instrument approach procedure.



NOTE: RADAR required.
 NOTE: RNAV 1.
 NOTE: DME/DME/IRU or GPS required.

NOTE: Chart not to scale.

OAKES TWO ARRIVAL (RNAV) Arrival Routes
 (OAKES, OAKES2) 150CT15
 OAKLAND, CALIFORNIA
 SAN FRANCISCO BAY OAKLAND INTL (OAK)

(OAKES, OAKES2) 24249
 OAKES TWO ARRIVAL (RNAV) Arrival Routes
 AL-294 (FAA)
 SAN FRANCISCO BAY OAKLAND INTL (OAK)
 OAKLAND, CALIFORNIA