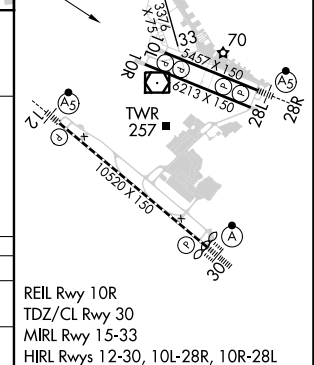
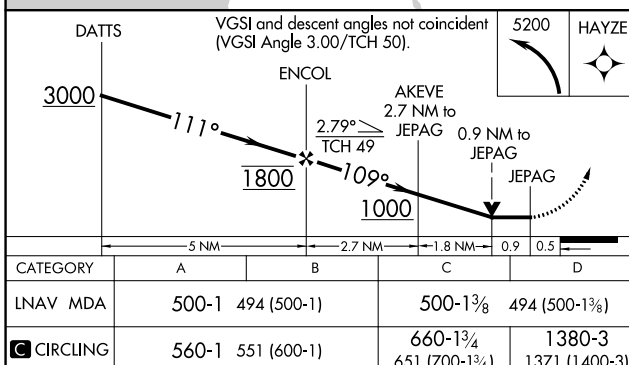
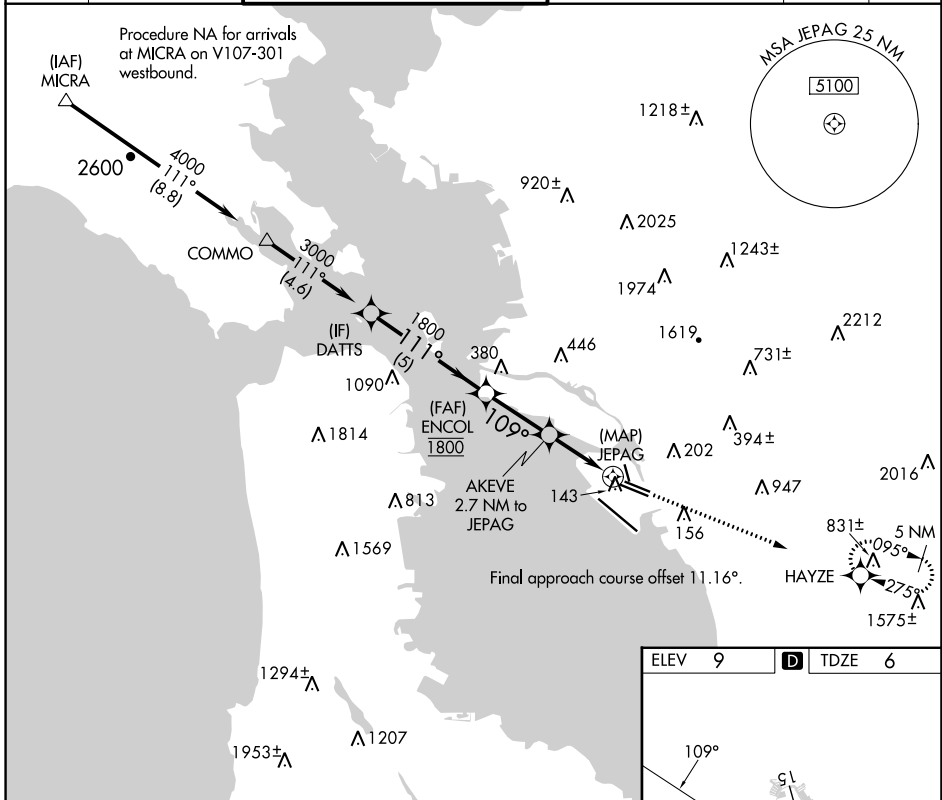


APP CRS	Rwy Idg	5336
109°	TDZE	6
	Apt Elev	9

RNAV (GPS) RWY 10L

SAN FRANCISCO BAY OAKLAND INTL (OAK)

<p>▽ DME/DME RNP-0.3 NA. ▲ Helicopter visibility reduction below 3/4 SM not authorized.</p>	<p>OAKLAND TOWER (Rwys 10L/R-28L/R, 15-33) 118.3 291.65 127.2 256.9 (Rwy 12-30)</p>		<p>GND CON (Rwys 10L/R-28L/R, 15-33) 121.9 121.75 (Rwy 12-30)</p>		<p>CLNC DEL 121.1</p>	<p>CPDLC</p>
	<p>D-ATIS 133.775</p>	<p>NORCAL APP CON 125.35 263.15</p>	<p>MISSED APPROACH: Climbing left turn to 5200 direct HAYZE and hold, continue climb-in-hold to 5200.</p>			



SW-2, 28 NOV 2024 to 26 DEC 2024

SW-2, 28 NOV 2024 to 26 DEC 2024