

APP CRS	Rwy Idg	<b>5457</b>
<b>278°</b>	TDZE	<b>7</b>
	Apt Elev	<b>9</b>

# RNAV (RNP) Z RWY 28R

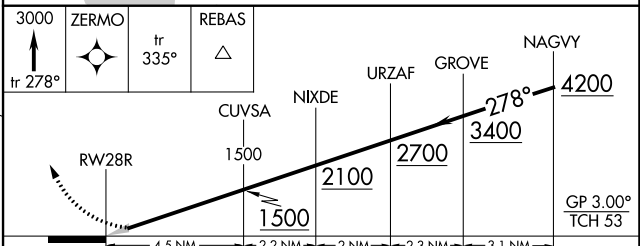
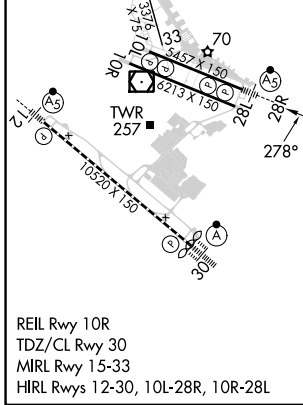
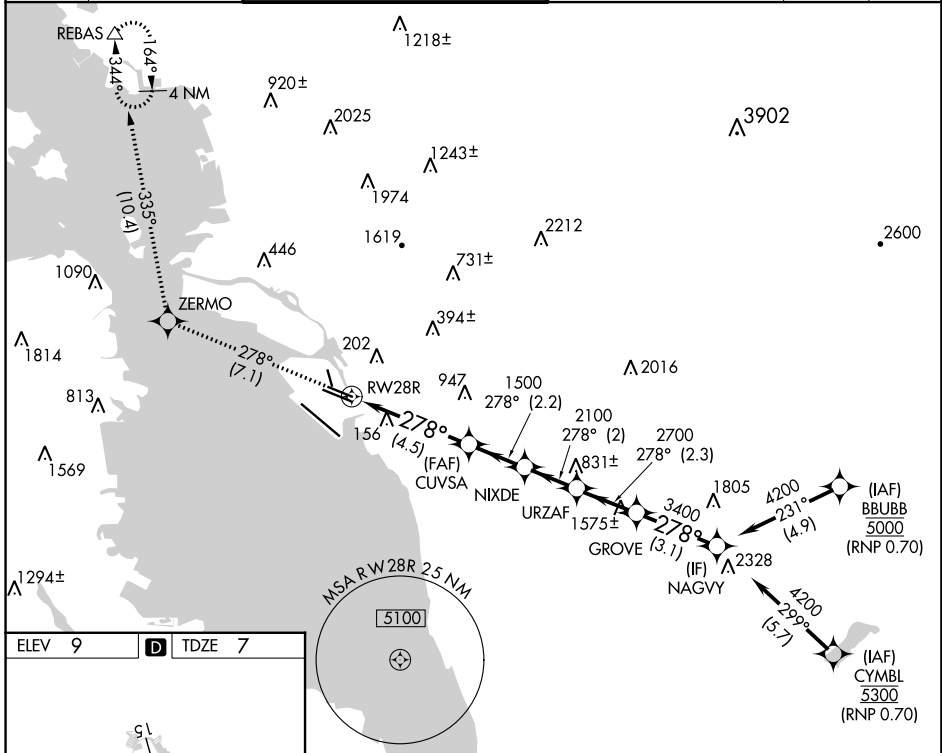
SAN FRANCISCO BAY OAKLAND INTL (OAK)

**▼** For uncompensated Baro-VNAV systems, procedure NA below 1°C (34°F) or above 54°C (130°F). For inop MALSR, increase RNP 0.11 DA all Cats visibility to RVR 4500. GPS required.



**MISSED APPROACH:** Climb to 3000 on track 278° to ZERMO and on track 335° to REBAS and hold.

D-ATIS <b>133.775</b>	NORCAL APP CON <b>125.35 263.15</b>	<b>OAKLAND TOWER</b> <b>118.3 291.65</b> (Rwys 10L/R-28L/R, 15-33) <b>127.2 256.9</b> (Rwy 12-30)	GND CON <b>121.9</b> (Rwys 10L/R-28L/R, 15-33) <b>121.75</b> (Rwy 12-30)	CLNC DEL <b>121.1</b>	CPDLC
--------------------------	--	---	--	--------------------------	-------



CATEGORY	A	B	C	D
RNP 0.11 DA		276/24	269 (300-½)	
RNP 0.30 DA		414/45	407 (500-¾)	

**AUTHORIZATION REQUIRED**

SW-2, 28 NOV 2024 to 26 DEC 2024

SW-2, 28 NOV 2024 to 26 DEC 2024