

SILENT THREE DEPARTURE

D-ATIS
133.775
CLNC DEL
121.1
CPDLC
NORCAL DEP CON
120.9 323.2

RED BLUFF
115.7 RBL
Chan 104

**TOP ALTITUDE:
ASSIGNED BY ATC**

MENDOCINO
112.3 ENI
Chan 70

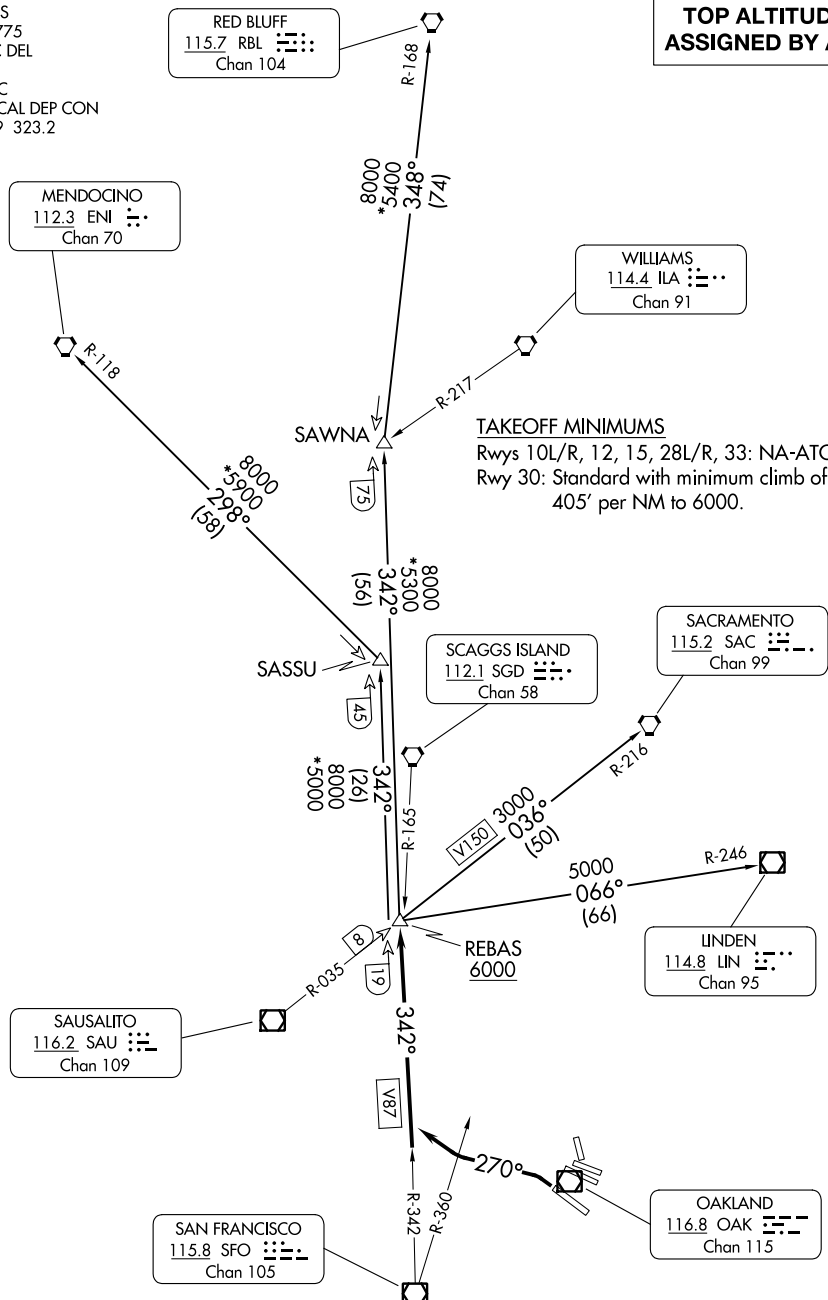
WILLIAMS
114.4 IIA
Chan 91

TAKEOFF MINIMUMS

Rwys 10L/R, 12, 15, 28L/R, 33: NA-ATC.
Rwy 30: Standard with minimum climb of
405' per NM to 6000.

SW-2, 28 NOV 2024 to 26 DEC 2024

SW-2, 28 NOV 2024 to 26 DEC 2024



(CONTINUED ON FOLLOWING PAGE)

NOTE: Chart not to scale.

SILENT THREE DEPARTURE



DEPARTURE ROUTE DESCRIPTION

TAKEOFF RUNWAY 30: Climbing left turn on heading 270° to V87 (commence right turn at SFO R-360) to REBAS INT/SFO 19 DME. Cross REBAS INT at or above 6000. Thence
. . . . (transition). Expect filed altitude 10 minutes after departure.

LINDEN TRANSITION (SLNT3.LIN): From over REBAS INT on LIN R-246 to LIN VOR/DME.

MENDOCINO TRANSITION (SLNT3.ENI): From over REBAS INT on SFO R-342 to SASSU INT, then on ENI R-118 to ENI VORTAC.

RED BLUFF TRANSITION (SLNT3.RBL): From over REBAS INT on SFO R-342 to SAWNA INT, then on RBL R-168 to RBL VORTAC.

SACRAMENTO TRANSITION (SLNT3.SAC): From over REBAS INT on SAC R-216 to SAC VORTAC.

SW-2, 28 NOV 2024 to 26 DEC 2024

SW-2, 28 NOV 2024 to 26 DEC 2024