

OKLAHOMA CITY, OKLAHOMA

HI-ILS or LOC/DME Y RWY 18

LOC I-FRJ 111.3	APCH CRS 177°	Rwy ldg 11,100 TDZE 1267 Arprt Elev 1291
---------------------------	-------------------------	---

[USAF]

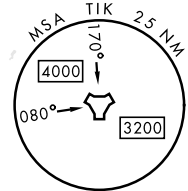
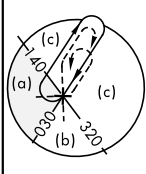
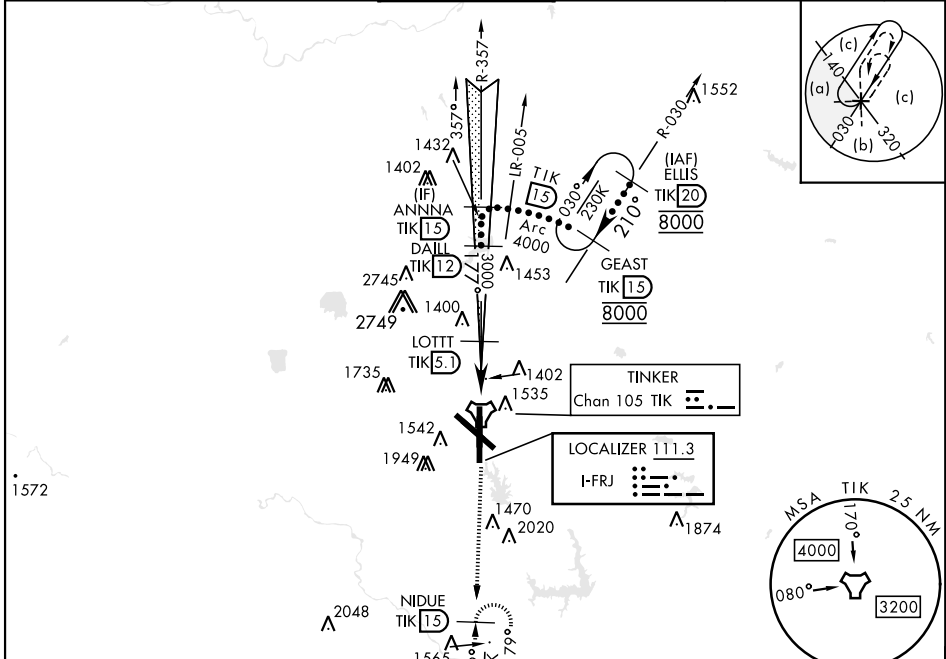
TINKER AFB (KTIK)

▼ * When ALS inop, increase CAT CDE RVR to 55 and vis to 1 mile.
 ** CAT E circling NA in sector S of Rwy 13-31 and W of RWY 18. Circling NA to Rwy 18.

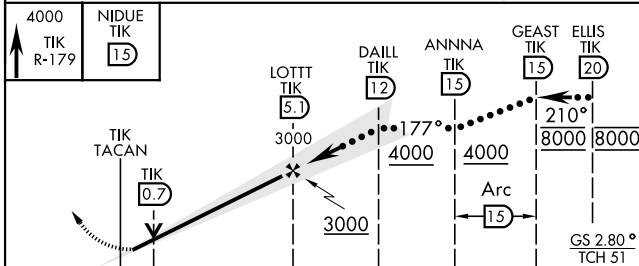


MISSED APPROACH: Climb to 4000 on TIK TACAN R-179 to NIDUE and hold.

ATIS ★ 270.1	OKE CITY APP CON 124.2 336.4	TOWER 124.45 251.05	GND CON 121.8 275.8	CLNC DEL 119.7 335.8	ASR
------------------------	--	-------------------------------	-------------------------------	--------------------------------	-----



Localizer unusable within 0.4 NM from threshold.
 Localizer NA beyond 15° right of course.
 EMERG SAFE ALT 100 NM 4700



ELEV 1291	TDZE 1267
HIRL all rwys	
FAF to MAP 4.8 NM	
Knots	120 140 160 180 200
Min:Sec	2:24 2:03 1:48 1:36 1:26

OKLAHOMA CITY, OKLAHOMA

35°25'N-97°23'W

TINKER AFB (KTIK)

Amtd 6 13JUN24

HI-ILS or LOC/DME Y RWY 18

SC-1, 28 NOV 2024 to 26 DEC 2024

SC-1, 28 NOV 2024 to 26 DEC 2024