
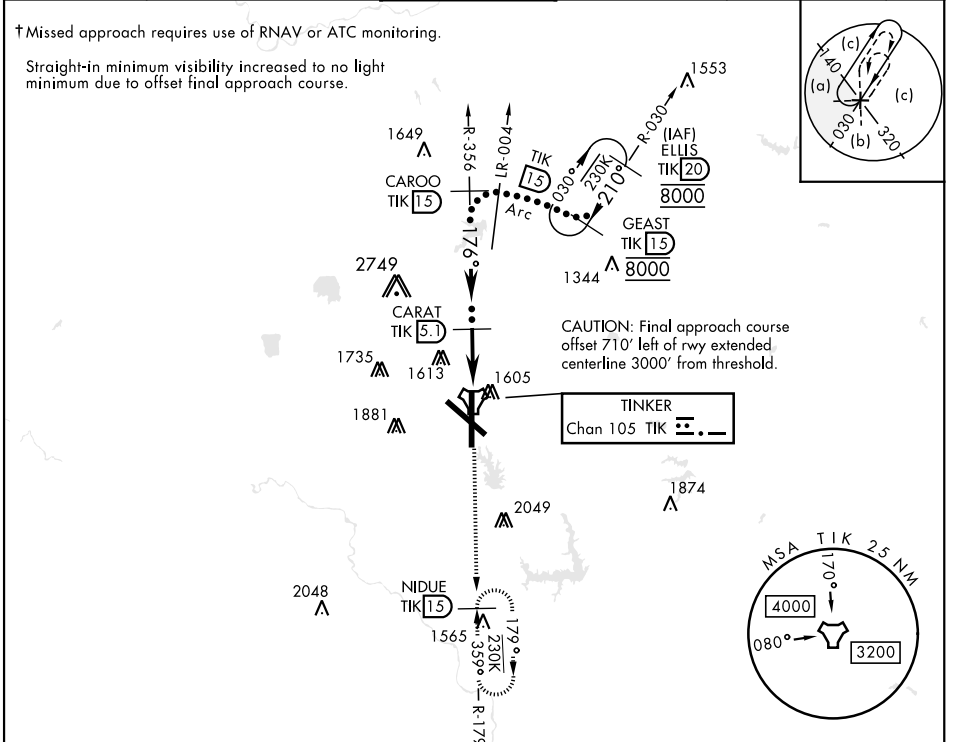


HI-TACAN Y RWY 18

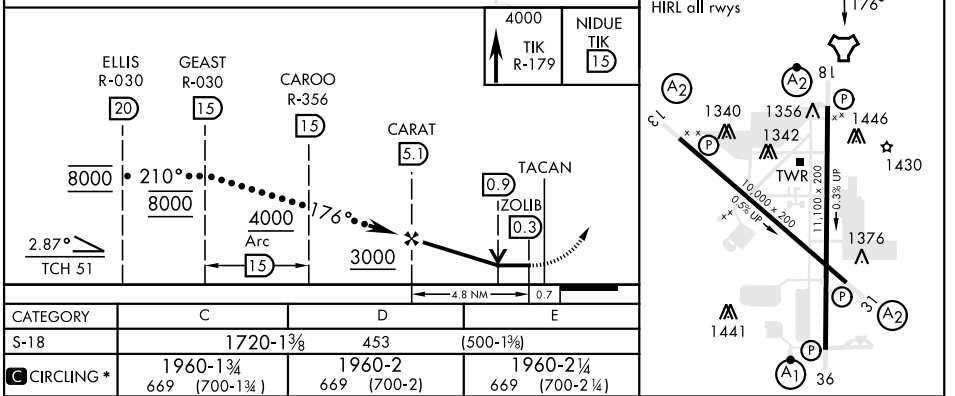
TACAN TIK Chan 105	APCH CRS 176°	Rwy Idg 11,100 TDZE 1267 Arprt Elev 1291	AL-299 [USAF]	TINKER AFB (KTIK)
------------------------------	-------------------------	---	---------------	-------------------

* CAT E circling not authorized in sector S of Rwy 13-31. Circling not authorized to Rwy 18. SALS 
† MISSED APPROACH: Climb to 4000 on TIK TACAN R-179 to NIDUE and hold.

ATIS ★ 270.1	OKE CITY APP CON 124.2 336.4	TOWER 124.45 251.05	GND CON 121.8 275.8	CLNC DEL 119.7 335.8	ASR
------------------------	--	-------------------------------	-------------------------------	--------------------------------	-----



EMERG SAFE ALT 100 NM 4700



OKLAHOMA CITY, OKLAHOMA 35°25'N-97°23'W TINKER AFB (KTIK)

HI-TACAN Y RWY 18



SC-1, 28 NOV 2024 to 26 DEC 2024

SC-1, 28 NOV 2024 to 26 DEC 2024