

OKLAHOMA CITY, OKLAHOMA

HI-TACAN Y RWY 36

TACAN TIK Chan 105	APCH CRS 359°	Rwy ldg 11,100 TDZE 1291 Arprt Elev 1291
-----------------------	------------------	--

[USAF]

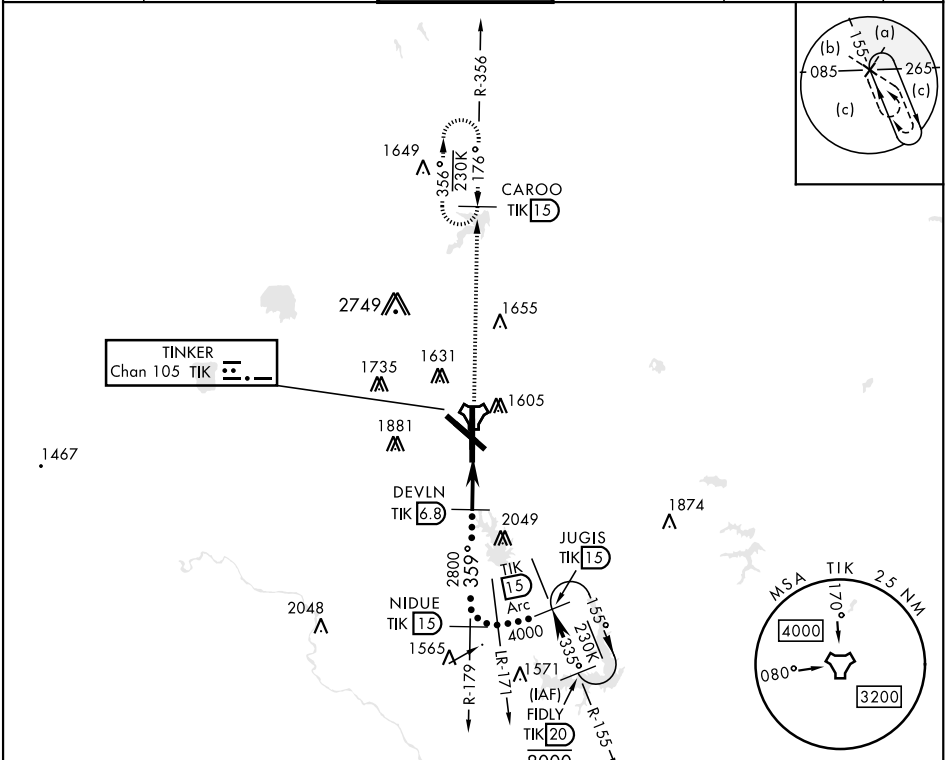
TINKER AFB (KTIK)

▼ * When ALS inop, increase CAT CDE vis by 1/2 mile.
 ** CAT E circling not authorized in sector S of Rwy 13-31. Circling not authorized to Rwy 18.

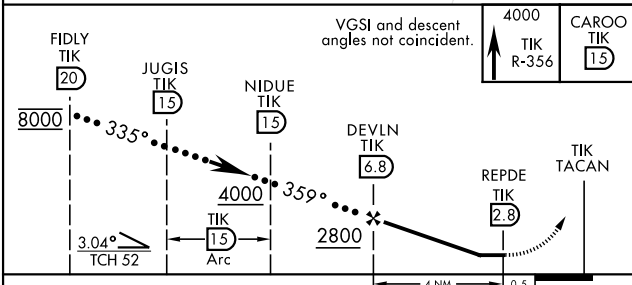


MISSED APPROACH: Climb to 4000 on TIK TACAN R-356 and hold.

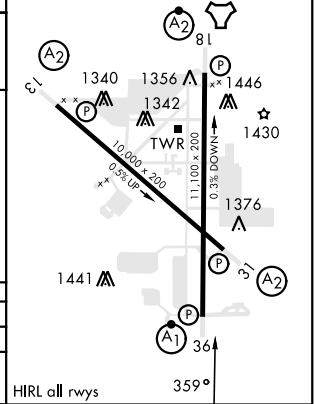
ATIS* 270.1	OKE CITY APP CON 120.45 288.325	TOWER 124.45 251.05	GND CON 121.8 275.8	CLNC DEL 119.7 335.8	ASR
----------------	------------------------------------	------------------------	------------------------	-------------------------	-----



EMERG SAFE ALT 100 NM 4700



ELEV 1291	TDZE 1291
-----------	-----------



CATEGORY	C	D	E
S-36 *	1720/40	429 (500-3/4)	
CIRCLING **	1960-1 3/4 669 (700-1 3/4)	1960-2 669 (700-2)	1960-2 1/2 669 (700-2 1/2)

OKLAHOMA CITY, OKLAHOMA

35° 25' N-97° 23' W

TINKER AFB (KTIK)

Amtd 4 13JUN24

HI-TACAN Y RWY 36

SC-1, 28 NOV 2024 to 26 DEC 2024

SC-1, 28 NOV 2024 to 26 DEC 2024