

# LOC/DME RWY 31

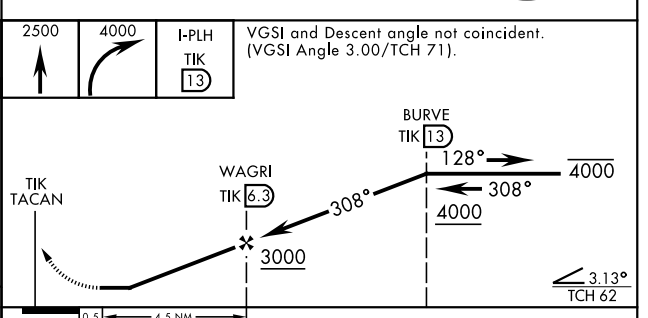
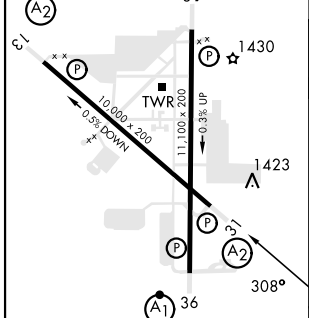
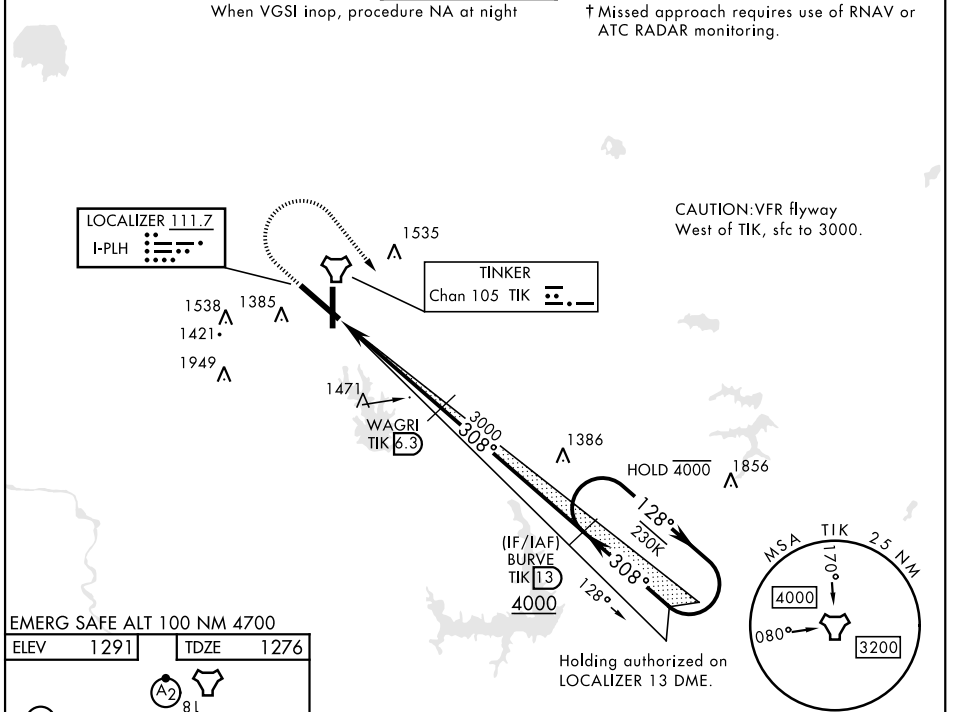
LOC I-PLH <b>111.7</b>	APCH CRS <b>308°</b>	Rwy ldg <b>10,000</b> TDZE <b>1276</b> Arprt Elev <b>1291</b>	[USAF]	TINKER AFB (KTIK)
---------------------------	-------------------------	---	--------	-------------------

RADAR required	SALS <b>(A2)</b>	† MISSED APPROACH: Climb straight ahead to 2500, then turn right to 4000 direct I-PLH and TIK 13 DME (BURVE) and hold.
----------------	---------------------	--

ATIS ★ <b>270.1</b>	OKE CITY APP CON <b>120.45 288.325</b>	TOWER <b>124.45 251.05</b>	GND CON <b>121.8 275.8</b>	CLNC DEL <b>119.7 335.8</b>	ASR
------------------------	---	-------------------------------	-------------------------------	--------------------------------	-----

When VGSI inop, procedure NA at night

† Missed approach requires use of RNAV or ATC RADAR monitoring.



CATEGORY	A	B	C	D	E
S-LOC 31*	1740/50 464 (500-1)	1740/60 464 (500-1½)			
CIRCLING**	1840-1 549 (600-1)	1960-1½ 669 (700-1¾)	1980-2¼ 689 (700-2¼)	1960-2¼ 669 (700-2¼)	

# LOC/DME RWY 31

SC-1, 28 NOV 2024 to 26 DEC 2024

SC-1, 28 NOV 2024 to 26 DEC 2024