

OKLAHOMA CITY, OKLAHOMA

# RNAV (GPS) RWY 18

APCH CRS 176°	Rwy Idg THRE Arprt Elev	11,100 1260 1291
------------------	-------------------------------	------------------------

(USAF)

TINKER AFB (KTIK)

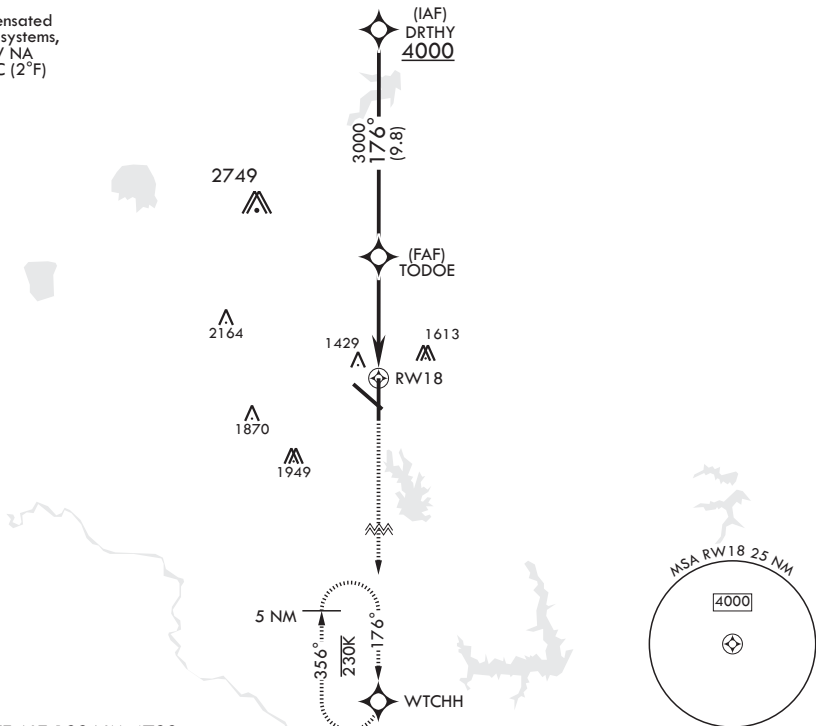
**⚠** \* Cat E Circling not authorized in sector S of Rwy 13-31 and W of Rwy 18-36.

**A2** MISSED APPROACH: Climb to 4000 direct WTCHH waypoint and hold.

ATIS★ 270.1	OKE CITY APP CON/DEP CON 124.2 336.4	TOWER 124.45 251.05	GND CON 121.8 275.8	CLNC DEL 119.7 335.8	ASR
----------------	---	------------------------	------------------------	-------------------------	-----

DME/DME RNP-0.3 NA

For uncompensated Baro-VNAV systems, LNAV/VNAV NA below -17°C (2°F)



EMERG SAFE ALT 100 NM 4700

<p>DRTHY 4000</p> <p>176°</p> <p>TODOE</p> <p>3000</p> <p>GP 3.00° TCH 50</p>		<p>VGSI and descent angles not coincident.</p> <p>4000 WTCHH</p> <p>ELEV 1291</p>		<p>THRE 1260</p> <p>176°</p> <p>1340 1356 1342 TWR 11,100 x 200</p> <p>10,000 x 200 0.5% UP</p> <p>11,111 x 111 0.3% UP</p> <p>BCN 1430 1376</p> <p>1441 1384 1425 36 (A1)</p> <p>HIRL all Rwys</p>	
<p>1.4 NM to RWY18</p> <p>5.2 NM</p>		<p>356° 230K 176° 5 NM</p>			
CATEGORY	A	B	C	D	E
LNAV/VNAV DA	1720-1¼		460	(500-1¼)	
LNAV MDA	1720/40	460 (500-¾)	1720/55	460	(500-1)
<b>C</b> CIRCLING*	1820-1 529 (600-1)		2000-2 709 (800-2)	2040-2½ 749 (800-2½)	2040-2¾ 749 (800-2¾)

OKLAHOMA CITY, OKLAHOMA

35°25'N - 97°23'W

TINKER AFB (KTIK)

Orig 13JUN24

# RNAV (GPS) RWY 18

SC-1, 28 NOV 2024 to 26 DEC 2024

SC-1, 28 NOV 2024 to 26 DEC 2024